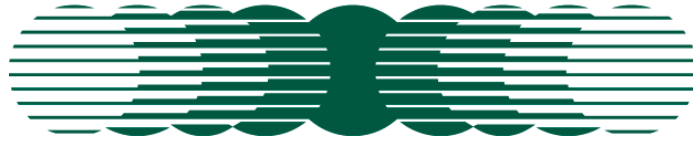


Amity

TECHNOLOGY



OWNERS OPERATING & PARTS MANUAL



2800 & 3350 AIR SYSTEM

Amity Technology, LLC
2800 7th Avenue North
Fargo, ND 58102
(701) 232-4199
www.amitytech.com

AMITY TECHNOLOGY, LLC LIMITED WARRANTY FOR NEW PRODUCTS

1. **General Provisions.** This Warranty shall apply to the original purchaser of (1) any new and unused machine manufactured by Amity Technology, LLC ("Amity"), and (2) any new and unused part which is manufactured by Amity for use in an Amity machine, jointly referred to as "Products," whether such Product is purchased through a dealer or directly from Amity. Under this Warranty, Amity will repair or replace, as it chooses in its sole discretion, any covered Product, or any component thereof, which Amity determines to be defective. This Warranty shall be in effect for a period of twelve (12) months ("the Warranty Period"), beginning on the date of delivery of the covered machine or part by the dealer or Amity to the purchaser ("the Warranty Start Date"). The purchaser must pay the cost of transportation of a Product to be repaired or replaced to and from an authorized Amity dealer. This Warranty may not be transferred from the original purchaser of a Product to any other person. This Warranty does not give a purchaser the right to any relief other than repair or replacement of the Product, and it specifically does not allow for consequential or incidental damages, exemplary or punitive damages, or costs and fees.
2. **Scope and Limitations of Warranty.** With respect to machines, this Warranty is void if any part not supplied by Amity is used in assembly or repair of the machine, or if the machine has been altered, abused or neglected, as determined by Amity. With respect to parts, this Warranty is void if the part is used in any manner other than that for which it is intended. This Warranty does not extend in any way to tires and any other component of a Product warranted by another manufacturer, a copy of which warranty is provided herewith ("Third-Party Warranties"). In the event Amity determines that a Product is not defective, or that any other provision of this Paragraph 2 operates to limit the Warranty, this Warranty shall not apply and the purchaser shall be responsible for transporting the Product from the authorized Amity dealer's location within 10 days of notice by Amity.
3. **Procedures for Obtaining Service.** To secure Warranty service, a purchaser must (1) report the defect to an authorized dealer and request repair within 45 days of the failure and within the Warranty Period; (2) present evidence that this Warranty applies to the Product; (3) present evidence of the Warranty Start Date; and (4) bring the Product to an authorized Amity dealer within a reasonable period of time after reporting the defect.
4. **LIMITATION OF IMPLIED WARRANTIES AND OTHER REMEDIES.** To the extent allowed by law, neither Amity, its dealers, nor any company affiliated with Amity makes any warranties, representations, or promises as to the quality, performance, or freedom from defect of any Product covered by this Warranty.
AMITY HEREBY WAIVES, TO THE EXTENT APPLICABLE, ANY AND ALL IMPLIED WARRANTIES OF MERCHANTABILITY AND FITNESS FOR A PARTICULAR PURPOSE. A PURCHASER'S ONLY REMEDIES IN CONNECTION WITH THIS WARRANTY ARE THOSE SET FORTH ON THIS PAGE. IN NO EVENT WILL AMITY, ITS DEALERS, OR ANY COMPANY AFFILIATED WITH AMITY BE LIABLE FOR INCIDENTAL, CONSEQUENTIAL OR PUNITIVE DAMAGES.
Some states do not allow waivers of certain warranties, so the above waivers may not apply to you. You may also have other rights which vary from state to state.
5. **No Dealer Warranty.** This is the exclusive warranty applicable to Amity Products. No dealer has any authority to make any other warranty, modify, limit, or expand the terms of this Warranty in any fashion, or make any representation or promise on behalf of Amity.
6. **Dispute Resolution.** Any controversy or claim arising out of or relating to this Warranty must be settled by arbitration in Fargo, North Dakota, at a time and location designated by the arbitrator, but not exceeding 30 days after a demand for arbitration has been made, and may be conducted by electronic, video, or other technical means. Arbitration will be conducted by the American Arbitration Association in accordance with its Rules of Commercial Arbitration, and judgment upon the award rendered by the arbitrator may be entered in any court having jurisdiction thereof. The arbitrator will have the authority to order Amity to undertake a repair or replace any Product, at its election, if the arbitrator finds that this Warranty requires Amity to do so. The arbitrator will not have the authority to impose any other remedy against Amity, including without limitation consequential or incidental damages, exemplary or punitive damages, or costs and fees.

• AMITY TECHNOLOGY, LLC • 2800 7TH AVENUE NORTH • FARGO, ND 58102 • e-mail address: info@amitytech.com •

(701) 232-4199 fax (701) 234-1716

Prices subject to change without notice

OPERATING CONTENTS

PRECAUTIONS	4
FEATURES	
SAFETY RAILING	5
LIDS	5
BLOWER	6
HYDRAULIC CAPACITY	6
AUGER	7
CLUTCH	7
GEAR BOX	8
TIRES & RIMS	8
SEED METERS	8
OPERATING	
LOADING	9
UNLOADING	10
BLOWER	11
SEED METERS	12
RATE CHARTS	14
MAINTENANCE	
MAINTENANCE	18
STORAGE	19
TROUBLE SHOOTING	20
SPECIFICATIONS	21
CONTROLS	
MODULAR CONTROL SYSTEM	22
SWITCH BOX	26

PRECAUTIONS

SAFETY FIRST

The purpose of this manual is to assist you in safely operating and maintaining your Amity Technology equipment. It is the responsibility of the owner to ensure that any operator takes the time to thoroughly read and understand the information given.

It is not possible to overstate the importance of safety. Serious injury or death can result from improper operation of any farm equipment. We have taken great care to point out potential hazards that require special consideration.

Give all precautions and warnings the attention they deserve. The following symbol is used throughout the manual to alert you to them.



WARNING

ALWAYS know your equipment, **Read owners manual** before operating.

DO NOT allow anyone to ride on air system.

ALWAYS install and transport stops when transporting drill.

ALWAYS use adequate tow vehicle.

ALWAYS remember to properly secure safety chain.

DO NOT Transport over 20 MPH (32 KmPH).

DO NOT modify or alter this equipment without first contacting Amity Technology, LLC.



CAUTION

ALWAYS keep decals free of dirt and replace if they become damaged. See parts section for proper placement.

ALWAYS avoid high-pressure fluids. Use a piece of cardboard to search for suspected hydraulic leaks.

FEATURES

SAFETY RAILING

Always make sure that the safety railings are secured in the raised position when operating the air system. The railings may be lowered for storage if required.

To lower railings, removed the top bolt from each of the legs on the railing sections. Rotate the railing section down so that they hang beside the air system and reinsert the bolts in the holes for storage.

CAUTION: DO NOT LOWER THE RAILINGS WHILE STANDING ON THE CATWALKS. USE A SUITABLE LADDER AND LOWER THEM FROM BELOW. ALWAYS HAVE THE RAILINGS RAISED WHEN WORKING ON TOP OF THE AIR SYSTEM.

LIDS

The compartment lids on the air system compartments must be properly sealed for the meters to deliver product properly.

Periodically check the lid for proper adjustment and inspect the seal for damage.

Check the following for proper lid adjustment.

1. When lid is unlatched the lid should raise slightly on the latch end as shown in fig 3.
2. A firm pull should be required to over center the latch.

To adjust the hinge end of the lid, loosen or tighten the jam nuts on the hold down bar. (Fig.2)

To adjust the latch, loosen or tighten the nuts on the toggle u-bolt. (Fig. 3)

In the off season, it is recommended that the latch be released to relieve pressure on gasket.

CAUTION: IF EQUIPPED WITH SCREEN BASKETS, DO NOT STEP OR LEAN ON SCREENS. THEY WILL NOT SUPPORT A PERSONS WEIGHT AND MAY FALL INTO THE TANK RESULTING IN INJURY.



Figure 1



Figure 2



Figure 3

BLOWER

The blower on the air system is supplied oil by means of two 3/4" hydraulic lines. A check valve (1) between the lines near the blower prevents the motor from running backwards. The check valve also prevents motor cavitation during shut down.

A third smaller line (1/2") connected to the blower motor is a case drain line. It is imperative that this is connected to a line directly to the tractor reservoir. Back pressure on this line will cause the shaft seal on the motor to fail. It is recommended to use a female connector on this line at the tractor connection so that this line cannot accidentally be connected to pressure.

CAUTION!!! BE SURE THAT THE CASE DRAIN LINE ON THE BLOWER MOTOR IS NOT CONNECTED TO PRESSURE. DAMAGE TO SHAFT SEAL OR MOTOR WILL RESULT.

The only serviceable part on the blower is the shaft seal. This may be replaced if the motor leaks at the shaft. Do not disassemble motor to replace shaft seal. It is secured by a snap ring and can be removed with a seal pick.

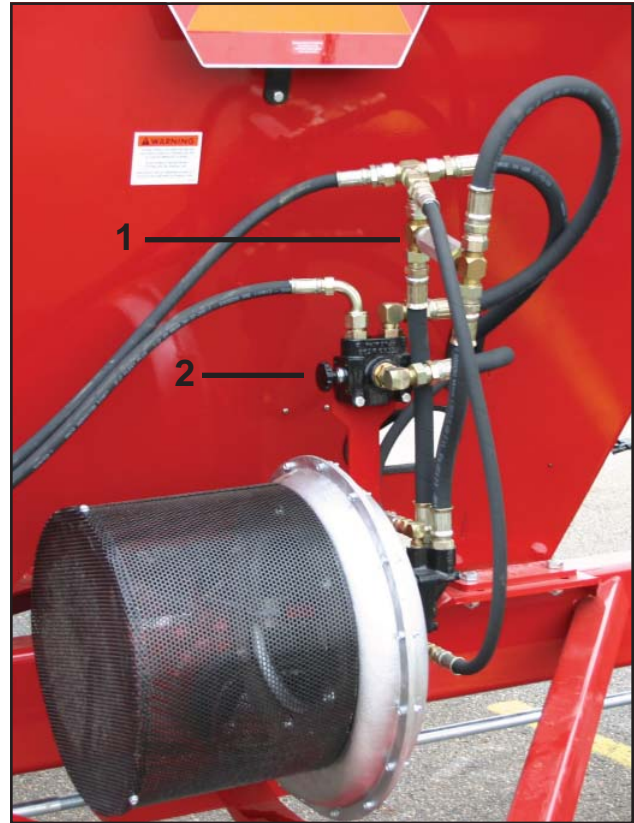
WARNING!!! DO NOT UNDER ANY CIRCUMSTANCES DISASSEMBLE MOTOR. IT IS VERY DIFFICULT TO ASSEMBLE CORRECTLY AND MOTOR DESTRUCTION WILL RESULT FROM RUNNING AN INCORRECTLY ASSEMBLED MOTOR.

HYDRAULIC CAPACITY

To run the hydraulic blower at the appropriate fan R.P.M., the tractor must have the following hydraulic capacities:

<u>FAN R.P.M.</u>	<u>HYDRAULIC REQUIREMENTS</u>
5000	13 GPM at 1500-2200 PSI
6000	16 GPM at 1700-2450 PSI

The number of outlets on the drill will directly affect the fan R.P.M. The more outlets in use, the higher the pressure required to maintain fan R.P.M. See your dealer for hydraulic adjustments to your tractor, if necessary.



A diverter valve (2) above the blower selects fan or auxiliary (auger and/or winch) function. Push knob in to run blower. Pull knob out to run auger or winch.

AUGER

(Fig. 4)

The hydraulic auger is supplied with oil from the blower hydraulics. A diverter valve above the blower directs oil to the auger. This may be switched with the blower running.

The auger also has a three position variable speed valve mounted on it to run the auger forward, backward or to stop.



Figure 4

LOADING/UNLOADING

The auger is mounted on a swing arm that allows the flexible hose of the auger to be moved to each compartment without moving the hopper. The swing arm allows the auger to be turned around to unload and clean out the compartments.



Figure 5

CLUTCH

(Fig. 6)

The magnetic clutch uses electrical power to hold it engaged. The clutch is turned on and off from the switch box or an optional automatic remote clutch switch which turns clutch off when drill is raised. The clutch requires no service. When transporting long distances, remove the drive chain at the drive wheel. This will extend chain and sprocket life.

NOTE: MAXIMUM RECOMMENDED TRANSPORT SPEED IS 20 MPH



Figure 6

GEAR BOX

(Fig. 7)

The gearbox is filled with oil at the factory and does not require service. If a visible leak appears at one of the seals, repair the box and fill half full with 85W90 oil.

The drive line components are protected by a shear pin located on the gearbox coupler. If the pin fails, locate reason for the failure, remove, and install a new shear pin.

To replace shear pin:

(Fig. 8)

1. Loosen bolt on locking tab and rotate tab out of machined groove in shear pin.
2. Remove broken shear pin pieces and line up holes in coupler with hole in shaft.
3. Install new shear pin.
4. Rotate lock tab into machined groove on shear pin and tighten the bolt on the tab.



Figure 7



Figure 8

TIRES AND RIMS

(Fig. 9)

Inflate tires to pressure indicated. Torque lug nuts to 140 ft/lbs and retighten after the first 10 hours of operation.



 CAUTION! 		
TIRE PRESSURES		
TIRE SIZE	TIRE PLY	TIRE PRESSURE
18.4 X 26.0	10	26 (MAX)
23.1 X 26.0	8	16 (MAX)
23.1 X 26.0	10	20 (MAX)

Figure 9

SEED METERS

The seed meters deliver product from the seeder tank to the air stream by means of a fluted roller. The amount of the roller that is being used determines the rate at which product is applied.



OPERATING

LOADING

NOTE: Auger can be used to load and unload seed tanks. Auger may be adjusted on brackets to suit operators needs.

(Fig 10)

To place the auger in operating position:

1. Drop front bracket lock pin only far enough to release the small pivot arm.
(Unpin long arm only to unload.)
2. Loosen lock assembly. (Tee Handle)
3. Remove auger from rear clamp assembly.

(Fig. 11)

1. Swing the hopper end of the auger away from the Air System and allow the short pivot arm to come out, away from the machine.
2. Place the hopper on the ground in a position perpendicular to the center line of the tanks with the discharge end of the auger between the compartment lids. From this position the discharge end of the auger should be able to be moved between compartments without moving the hopper.



Figure 10



Figure 11

UNLOADING

(Fig. 12)

1. Swing large arm far enough away from the machine to allow the hopper to fit between the wheels.
2. Place hopper under meter for compartment you wish to empty.



Figure 12

(Fig. 13)

1. Close metering slide.
2. Remove seed meter door.
3. Open metering slide to control flow from the compartment.

NOTE: Removing pointer allows gate to be opened without changing the rate setting.



Figure 13

(Fig. 14)

To clean out auger:

1. Tip hopper upside down to empty.
2. Run auger backwards until auger tube is empty.



Figure 14

BLOWER SPEED

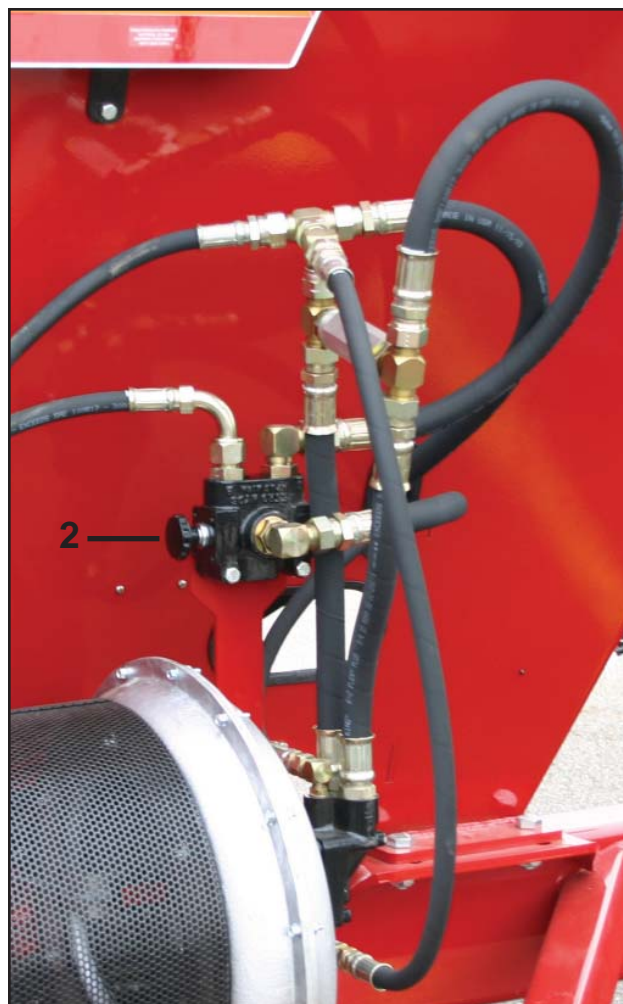
The blower should be run at as slow a speed as possible to prevent damage to seed. If run too slow, line blockage will occur. Typical blower speeds are between 3800 and 6000 RPM. Drill width, product, rate, humidity and other factors affect blower speed.

One method to determine blower RPM is to remove a final run from the seed boot or shoe. Hold the hose about 5 feet off of the ground pointing straight up. Turn product out of the meter with the blower running. The product coming from the hose should blow out of the hose about 8 inches into the air. Adjust blower RPM accordingly.

If you do not have a run blockage monitor, carefully watch to see that all runs are operating after changing blower speeds. To check runs, turn meter(s) with blower running and look to see that there is product at each ground opener.



WARNING!!! DO NOT UNDER ANY CIRCUMSTANCES DISASSEMBLE MOTOR. IT IS VERY DIFFICULT TO ASSEMBLE CORRECTLY AND MOTOR DESTRUCTION WILL RESULT FROM RUNNING AN INCORRECTLY ASSEMBLED MOTOR.



A diverter valve (2) above the blower selects fan or auxiliary (auger and/or winch) function. Push knob in to run blower. Pull knob out to run auger or winch.

SEED METERS

The seed meters deliver product from the seeder tank to the air stream by means of a fluted roller. The amount of the roller that is being used determines the rate at which products is applied.

There are two moveable components in the meter that make up a rate setting. The primary setting is a flow plate that is adjusted by means of a rod connected to a pointer. When a rate setting is selected, the pointer is simply placed at that number on the rate decal. A lock bolt on the pointer rod secures the setting. The second part of the adjustment is the meter shut off slide. For any rate setting the proper place for shut off slide is against the stop on the pointer. This opens the bottom of the tank compartment the proper amount for the rate setting. A ½” drive ratchet supplied in the toolbox is used to adjust the meter shut off slide.

Any time that a new rate is set, the rate setting should be confirmed by calibrating the meter.

A scale and catch bag are supplied in the tool box for calibration.

Once a rate setting is determined from the rate charts and the meter is set to that setting, follow these steps to perform a calibration.

When using both tanks for one product, set each meter to the desired rate from that meter.

EXAMPLE: If you desire to seed 120 lbs. of wheat using both meters, split the desired **pounds per acre** rate to the ratio of the size of the tanks. i.e. If the Air System is a 60/40 split, set one meter to 72 lbs. (120 x.6) and the other meter to 48 lbs. (120 x.4)

Look up the rate setting for each tank separately in the appropriate rate chart.

NOTE: WHEN REDUCING METER SETTING, IT MAY BE NECESSARY TO CLOSE THE SHUT OFFSLIDE AND TURN THE METER TO EMPTY IT. THIS WILL EMPTY THE METER AND ALLOW THE PLATE TO MOVE TO A SMALLER SETTING.

CALIBRATION

1. Set pointer to desired rate setting.
2. Secure setting by tightening bolt to lock pointer rod. The proper wrench is in the toolbox.
3. Use the ratchet supplied to open shut off slide until it contacts stop on pointer.
4. Hang calibration bag on scale and zero scale so the weight of the bag will not interfere with calibration.
5. Open clean out door under air tube by releasing toggle clamps.
6. Turn crank at front of Air System one complete revolution to prime meter.
7. Hang bag on meter tube so that clean out door is inside of bag and bag is under openings in the bottom of air tube.
8. Turn meter 1/10 of an acre. For turns per acre see chart. (below)
9. Remove the bag and weigh on scale. Multiply weight times 10 to get rate per acre.
10. Adjust meter to higher or lower setting and recalibrate until desired rate is set.

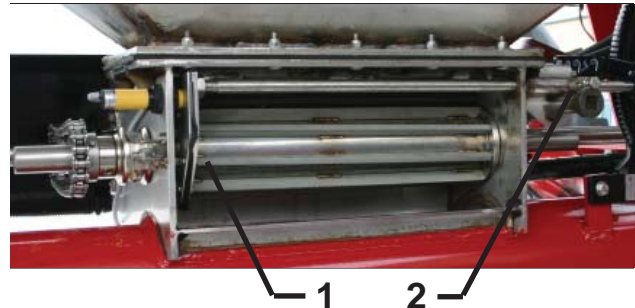


Plate (1) controls how much of flute will be used. Shut off slide (2) is opened to stop on pointer for any rate setting. When making large rate reductions, close slide and empty meter to allow plate to move to lower setting. Remember to reopen slide until it contacts stop on pointer.

Width	Turns of crank	Width	Turns of crank
30	126	46	83
32	119	48	79
34	112	50	76
36	106	52	73
38	100	54	70
40	95	56	68
42	90	58	66
44	86	60	63
45	85		

Seed Rate Setting Tips

- When setting a rate for a small amount per acre such as canola or sunflowers, calibrate with more than 1/10 of an acre amount of turns. Turn out a complete acre for rates less than a 10 lb. rate
- Recalibrate rates after seeding a partial tank.
- Remember to “prime the meter” by turning the crank before calibrating.
- Remember to zero the scale with the empty bag on it before calibrating.
- Close meter shut off slide on compartment not being calibrated.

Changing Metering Rolls

1. Remove pointer from pointer rod by removing quick pin.
2. Use $\frac{3}{4}$ " wrench to release jam nut on flow plate.
3. Unscrew rod from flow plate and set flow plate aside.
4. Remove chain from meter drive sprocket. Do not remove sprocket.
5. Remove the two nuts that hold bearing on meter shaft (sprocket end only).
6. Pull shaft out of meter while holding on to flute.
7. Remove flute.
8. Re-assemble meter in reverse order with desired flute.

Flute options

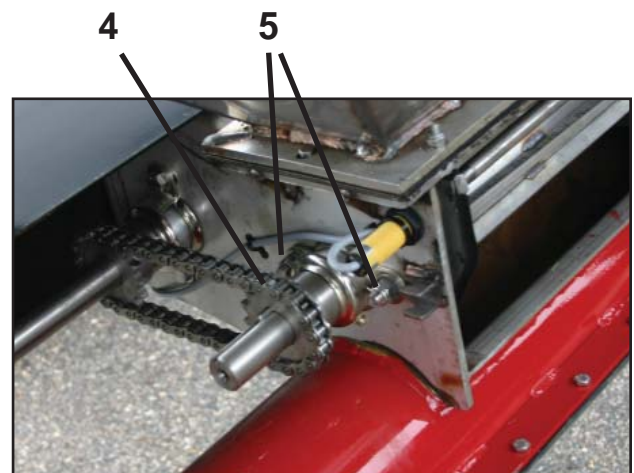
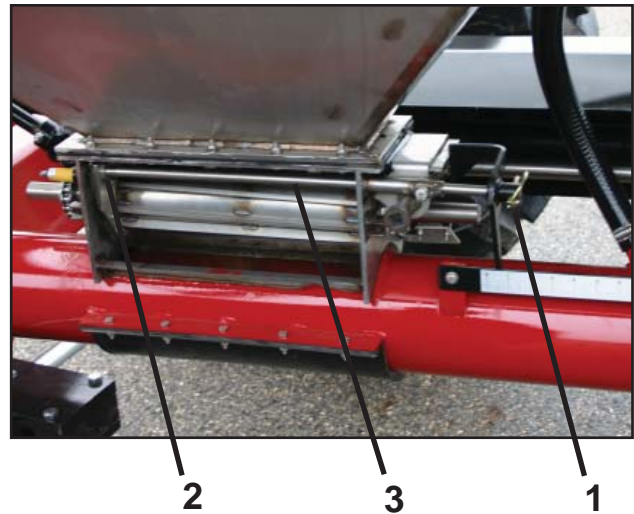
All of the Fargo Aire meter rollers are constructed of stainless steel for lifetime performance.

Three flute options are available.

The high capacity flute has eight $\frac{1}{2}$ " deep bars and is used for most applications.

The medium capacity flute has twelve $\frac{1}{4}$ " deep bars and is used on smaller machines or for consistently lower seeding or fertilizing rate.

The canola flute has a pattern of shallow depressions for very low seeding rate.



WHEAT

High Capacity Flute 1/4" WIDE X 1/2" DEEP BARS

APPLICATION RATE (POUNDS PER ACRE)

	60	70	80	90	100	110	120	130	140	150	160	170	180	190	200	210	220	230	240
W	20 ft. 2.7	3.1	3.6	4.0	4.5	5.0	5.4	5.8	6.3	6.7	7.2	7.6	8.1	8.5	8.9	9.4	9.8	10.3	10.8
I	25 3.4	3.9	4.5	5.0	5.6	6.2	6.8	7.3	7.8	8.4	8.9	9.5	10.1	10.6	11.2	11.8	12.3	12.9	13.4
D																			
T	30 4.1	4.7	5.4	6.0	6.8	7.4	8.1	8.8	9.4	10.1	10.7	11.4	12.1	12.8	13.4				
H	35 4.7	5.5	6.3	7.0	7.9	8.7	9.5	10.2	10.9	11.7	12.5	13.3							
	40 5.4	6.3	7.2	8.0	9.0	9.9	10.8	11.7	12.5	13.4									
	45 6.1	7.1	8.1	9.0	10.1	11.1	12.2	13.2											
	50 6.8	7.9	9.0	10.0	11.3	12.4	13.5												
	55 7.4	8.7	9.9	11.0	12.4	13.6													
	60 8.1	9.4	10.8	12.0	13.5														

FERTILIZER (60# PER CUBIC FT.)

High Capacity Flute
1/4" WIDE X 1/2" DEEP BARS

APPLICATION RATE (POUNDS PER ACRE)

	60	70	80	90	100	110	120	130	140	150	160	170	180	190	200	210	220	230	240
W	20 ft. 2.3	2.7	3.1	3.5	3.8	4.2	4.6	5.0	5.4	5.8	6.1	6.5	6.9	7.3	7.7	8.1	8.4	8.8	9.2
I	25 2.9	3.4	3.8	4.3	4.8	5.3	5.8	6.2	6.7	7.2	7.7	8.2	8.6	9.1	9.6	10.1	10.6	11.0	11.5
D																			
T	30 3.5	4.0	4.6	5.2	5.8	6.3	6.9	7.5	8.1	8.6	9.2	9.8	10.4	10.9	11.5	12.1	12.7	13.2	13.8
H	35 4.0	4.7	5.4	6.0	6.7	7.4	8.1	8.7	9.4	10.1	10.8	11.4	12.1	12.8	13.4				
	40 4.6	5.4	6.1	6.9	7.7	8.4	9.2	10.0	10.8	11.5	12.3	13.1	13.8						
	45 5.2	6.0	6.9	7.8	8.6	9.5	10.4	11.2	12.1	13.0	13.8								
	50 5.8	6.7	7.7	8.6	9.6	10.6	11.5	12.5	13.4										
	55 6.3	7.4	8.4	9.5	10.6	11.6	12.7	13.7											
	60 6.9	8.1	9.2	10.4	11.5	12.7	13.8												

SOYBEANS

High Capacity Flute 1/4" WIDE X 1/2" DEEP BARS

APPLICATION RATE (POUNDS PER ACRE)

	60	70	80	90	100	110	120	130	140	150	160	170	180	190	200	210	220	230	240	
W	20 ft. 3.1	3.6	4.1	4.6	5.2	5.7	6.2	6.7	7.2	7.7	8.2	8.8	9.3	9.8	10.4	10.9	11.4	11.9	12.4	
I	25 3.9	4.5	5.2	5.8	6.4	7.1	7.8	8.4	9.0	9.6	10.3	10.9	11.6	12.2	12.9	13.6				
D																				
T	30 4.7	5.4	6.2	6.9	7.7	8.6	9.3	10.1	10.8	11.6	12.3	13.1	13.9							
H	35 5.4	6.3	7.2	8.0	9.0	10.0	10.9	11.7	12.6	13.5										
	40 6.2	7.2	8.3	9.2	10.3	11.4	12.4	13.4												
	45 7.0	8.1	9.3	10.4	11.6	12.8	14.0													
	50 7.8	9.1	10.3	11.5	12.9	14.0														
	55 8.5	10.0	11.4	12.6	14.2															
	60 9.3	10.9	12.4	13.8																

BARLEY

High Capacity Flute
1/4" X 1/2" DEEP BARS

APPLICATION RATE (POUNDS PER ACRE)

	60	70	80	90	100	110	120	130	140	150	160	170	180	190	200	210	220	230	240
W	20 ft. 3.4	3.9	4.5	5.0	5.6	6.2	6.7	7.3	7.8	8.4	8.9	9.5	10.1	10.7	11.2	11.8	12.3	12.9	13.4
I	25 4.2	4.9	5.6	6.3	7.0	7.7	8.4	9.1	9.8	10.5	11.2	11.9	12.6	13.3					
D																			
T	30 5.0	5.8	6.7	7.6	8.4	9.2	10.1	10.9	11.8	12.6	13.4								
H	35 5.9	6.8	7.8	8.8	9.8	10.8	11.7	12.8	13.7										
	40 6.7	7.8	8.9	10.1	11.2	12.3	13.4												
	45 7.5	7.0	10.0	11.4	12.6	13.8													
	50 8.4	9.8	11.1	12.6	14.0														
	55 9.2	10.7	12.2	13.9															
	60 10.1	11.7	13.4																

MAINTENANCE

LUBRICATION:

DRIVE LINE and STEERING - Lubricate all drive line bearings and steering components every 50 hours with a SAE multipurpose grease.



GEAR BOX - The gear box is filled at the factory and requires no maintenance. Service is required only if oil leaks become visible.



HYDRAULIC MOTOR - The hydraulic motor can only be damaged by heat or foreign material. Keep your tractor hydraulic oil and filter serviced regularly to ensure long life from your hydraulic components.



WHEEL BEARINGS - Annually check wheel bearings for tightness. Adjust if needed. Repack every 3 years.



STORAGE

Fully open seed meters.

Open clean out doors on bottom of air tube.

Clean any remaining product from tanks.

Use water to thoroughly clean any compartment used for fertilizer

Thoroughly clean fertilizer and dirt from cup area.

Clean inside of seed meter door. Fertilizer, seed and dirt accumulate in this area.

Clean any remaining product from auger and leave auger slide open.

Oil chains.

Grease all lubrication points.

Check gear box for visible leaks. If none, no service is required.

Release latch on tank lids to relieve pressure on lid gaskets.

TROUBLE SHOOTING

PROBLEM	POSSIBLE REMEDY
Seed cups will not engage	<ul style="list-style-type: none"> *Shear pin may have broken. Clear obstruction and replace pin. *Clutch has no power going to it. Be sure there is power to clutch using test light. *Clutch may have failed. If so, replace clutch.
Seed cups will not disengage	<ul style="list-style-type: none"> *Sprocket on clutch may have frozen shaft, check plastic bearing under sprocket. *Short in monitor is supplying power to the clutch. Find short and repair.
Seed is flowing without cups turning NOTE: A small amount of seed flow is normal and not cause for concern.	<ul style="list-style-type: none"> *Rubber deflector is not down tightly on flute. Lower the deflector. *Rubber wiper on seed cup door damaged or not up tightly against flute. Raise door or replace rubber wiper if damaged. *Product is building up in air delivery system. Increase blower speed.
Excessive seed cracking is occurring	<ul style="list-style-type: none"> *Air stream velocity is too great. Reduce blower speed or adjust blower baffle on dual air stream machines.
Seed boots are plugging	<ul style="list-style-type: none"> *Turning corners too sharply with boots in the ground. Always raise ground opener before making a sharp turn. *Ground openers have been left in the ground when backing up. Always raise ground opener before backing up.
Product distribution is uneven	A one inch hose may be plugged. Re-route or cut 1" hoses to eliminate sags. Clear any obstruction in hoses or boots.
Uneven delivery rate	<ul style="list-style-type: none"> *Loss of tank pressure. Check tank lids for leaks. Inspect and replace faulty gaskets.
Problems with monitor	See monitor section - TROUBLE SHOOTING
Oil showing up on seed lines	Shaft seal failure on hydraulic motor. Replace seal. WARNING: DO NOT DISASSEMBLE HYDRAULIC MOTOR!! THE SHAFT SEAL IS AN EXTERNAL REPLACEMENT ITEM.
Hydraulic motor slow	<ul style="list-style-type: none"> Monitor set to wrong blower speed setting (See Monitor Section). Tractor is not putting out adequate oil. Have tractor dealer inspect tractor hydraulics. Bad couplers. Check couplers on tractor and hoses. Try different couplers.

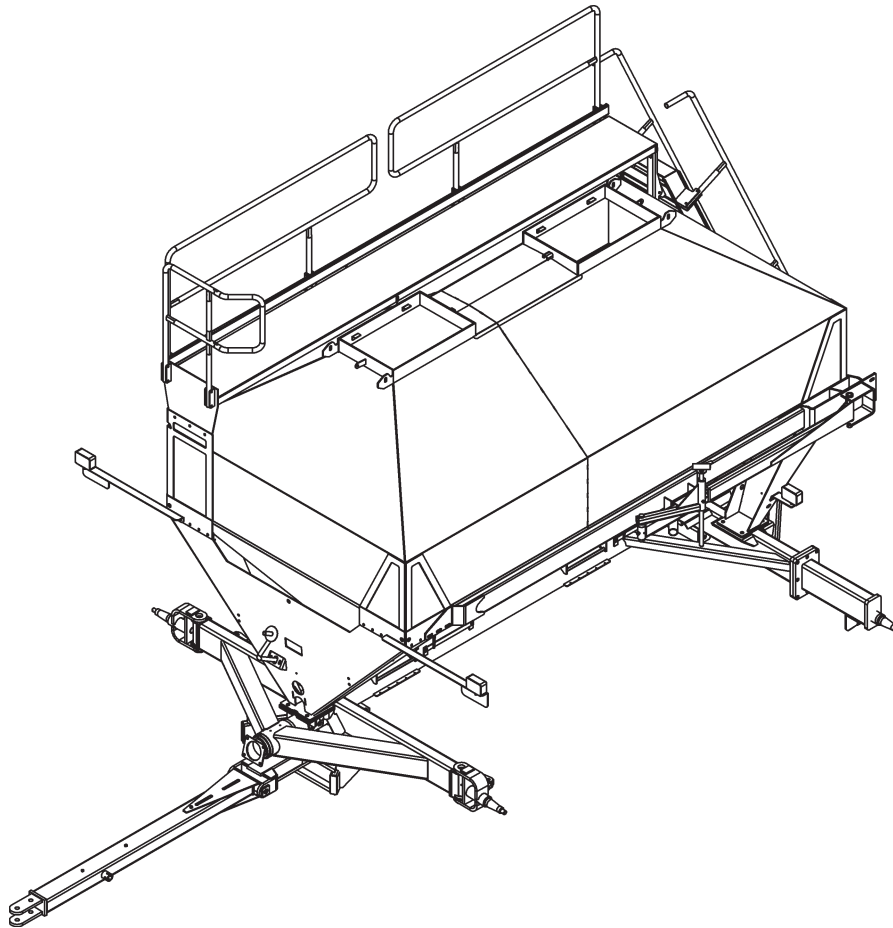
SPECIFICATIONS

	AS 2800	AS 3350
Hopper Capacity:	280 bu (168 rear, 112 front)	335 bu (200 rear, 135 front)
Fan Drive:	Hydraulic	Hydraulic
Meter Drive:	Ground	Ground
Wheel Spacing:	120" Front 150" Rear (120" rear optional)	120" Front 150" Rear (120" rear optional)
Tire Size:	23.1 x 26 R1 STANDARD (18.4 x 26 optional)	23.1 x 26 R1 STANDARD (18.4 x 26 optional)
Fill/Unload Auger: Cupped Steel Flighting (poly flighting optional)	8" x 18'	8" x 18'
Total Height:	12' 7"	13' 5"
Total Length:	27'	27'
Max Width:	14' 5"	14' 5"
Fill Height:	11'	11' 10"
Min. Ground Clearance:	19"	19"
Empty Weight:	8400 lbs.	8600 lbs.

STANDARD MONITOR FEATURES:

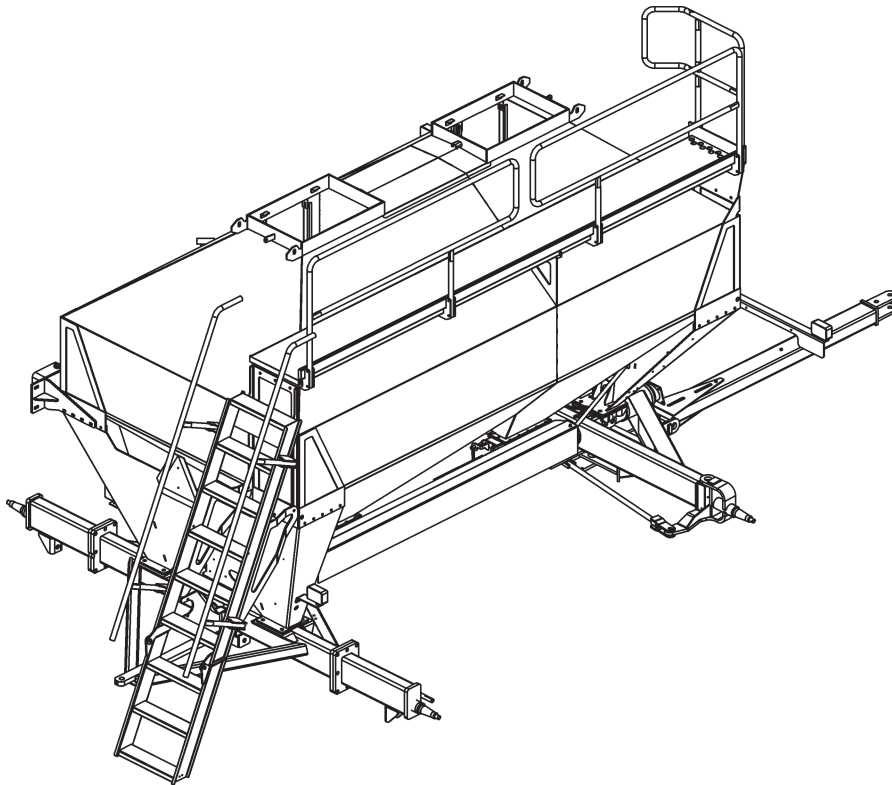
Bin Level Sensors	(1 per hopper)
Meter Flow Sensors	(1 per meter)
Meter Shaft Sensors	(1 per meter)
Ground Speed Sensor	(1 only)
Fan Speed Sensor	(1 only)
Mechanical Clutch Switch	(1 only) (optional)
Acre Count	(field & total)

AIR SYSTEM ASSEMBLY PARTS



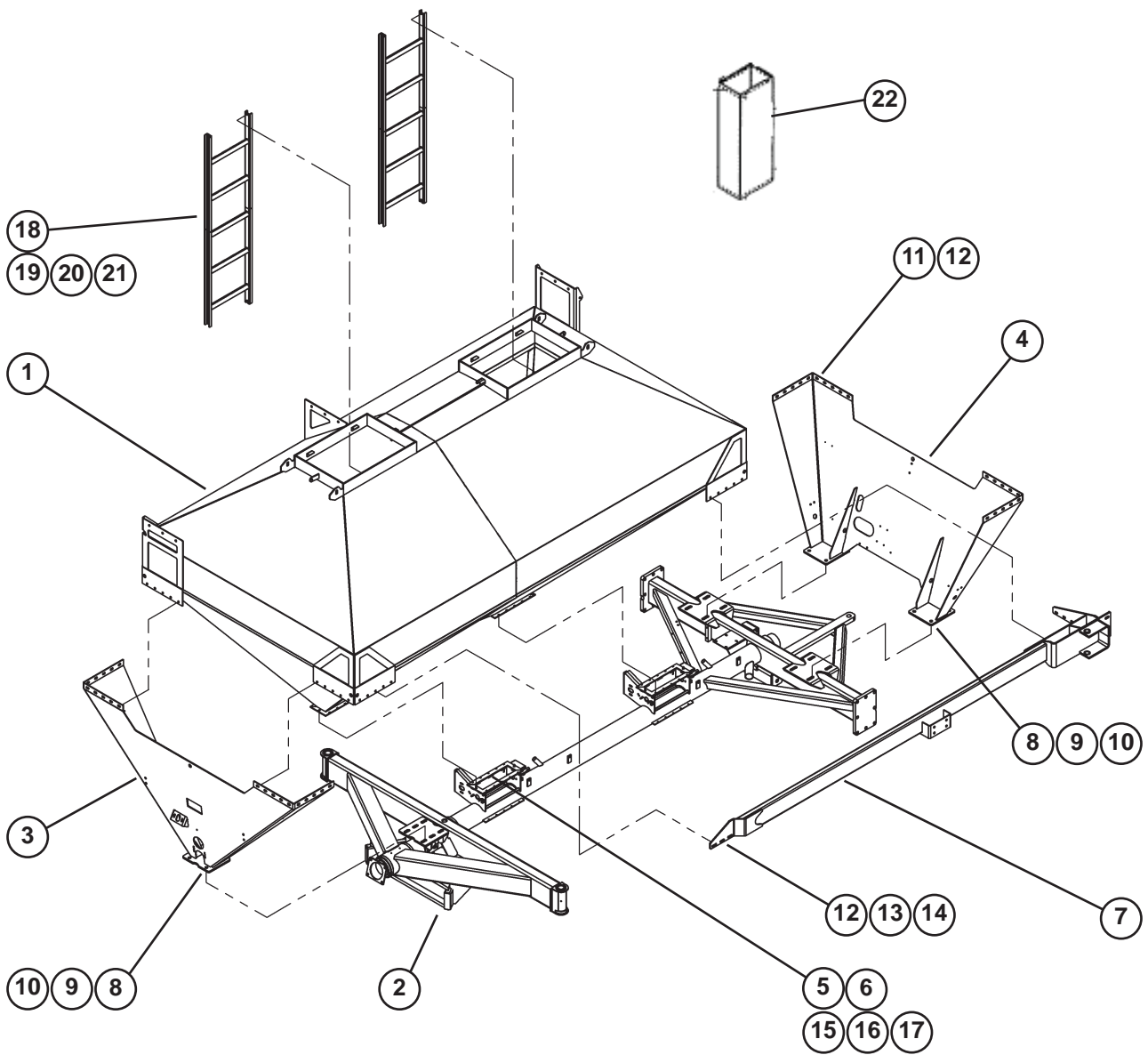
ASSY-AIR SYSTEM COMPLETE

Ref.	Part No.	Description	Qty.	Ref. Page
1	65401	ASSY-TANK/RUNNING GEAR 2800	1	26-27
	65939	ASSY-TANK/RUNNING GEAR 3350	1	26-27
2	65411	ASSY-AIRSTREAM SINGLE	1	27
3	65407	ASSY-PRESSURIZATION KIT	1	28
4	65409	ASSY-AXLES FRONT	1	29
5	65408	ASSY-DRAWPOLE & STEERING LINKAGE	1	30-31
6	65940	ASSY-AXLE REAR 150"	1	32
	65941	ASSY-AXLE REAR 120"	1	32
7	66092	ASSY-TIE ROD	1	33
8	1017759	ASSY-HUB	3	33
	65450	ASSY-HUB: TAPPED (DRIVE SIDE)	1	33
9	65410	ASSY-W&T 18.4X26 R1 8PLY, 16X26X8	1	37
	65423	ASSY-W&T 18.4X26 R2 10PLY, 16X26X8	1	37
	65424	ASSY-W&T 23.1X26 R1 8PLY, 20X26X8	1	37
10	65412	ASSY-METER DRIVELINE	1	34-35
11	66093	ASSY-CLUTCH SHAFT 120"	1	36
	66094	ASSY-CLUTCH SHAFT 150"	1	36
12	65413	ASSY-CLUTCH DRIVELINE	1	36-37
13	65414	ASSY-DUAL METER	1	38-39
14	65415	ASSY-ELECTRICAL	1	40-41



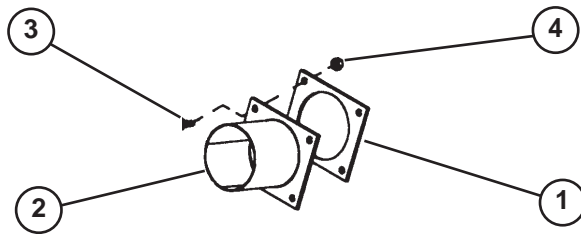
ASSY-AIR SYSTEM COMPLETE (continued)

Ref.	Part No.	Description	Qty.	Ref. Page
15	66099	ASSY-BLOWER	1	42
16	65416	ASSY-BLOWER HYDRAULIC	1	43-44
17	65417	ASSY-CATWALK & HANDRAILS	1	45
18	65459	ASSY-LADDER AIR SYSTEM	1	46
19	65461	ASSY-AUGER MOUNTING COMPONENTS (8"/10")	1	47
20	65420	ASSY-AUGER & HYDRAULICS (8")	1	48-49
	66100	ASSY-AUGER & HYDRAULICS (10")	1	48-49
21	65418	ASSY-DOORS	1	50
22	65421	ASSY-DECALS AIR SYSTEM 2800	1	51
	66050	ASSY-DECALS AIR SYSTEM 3350	1	51
23	65823	ASSY-SAFETY LIGHT	1	52



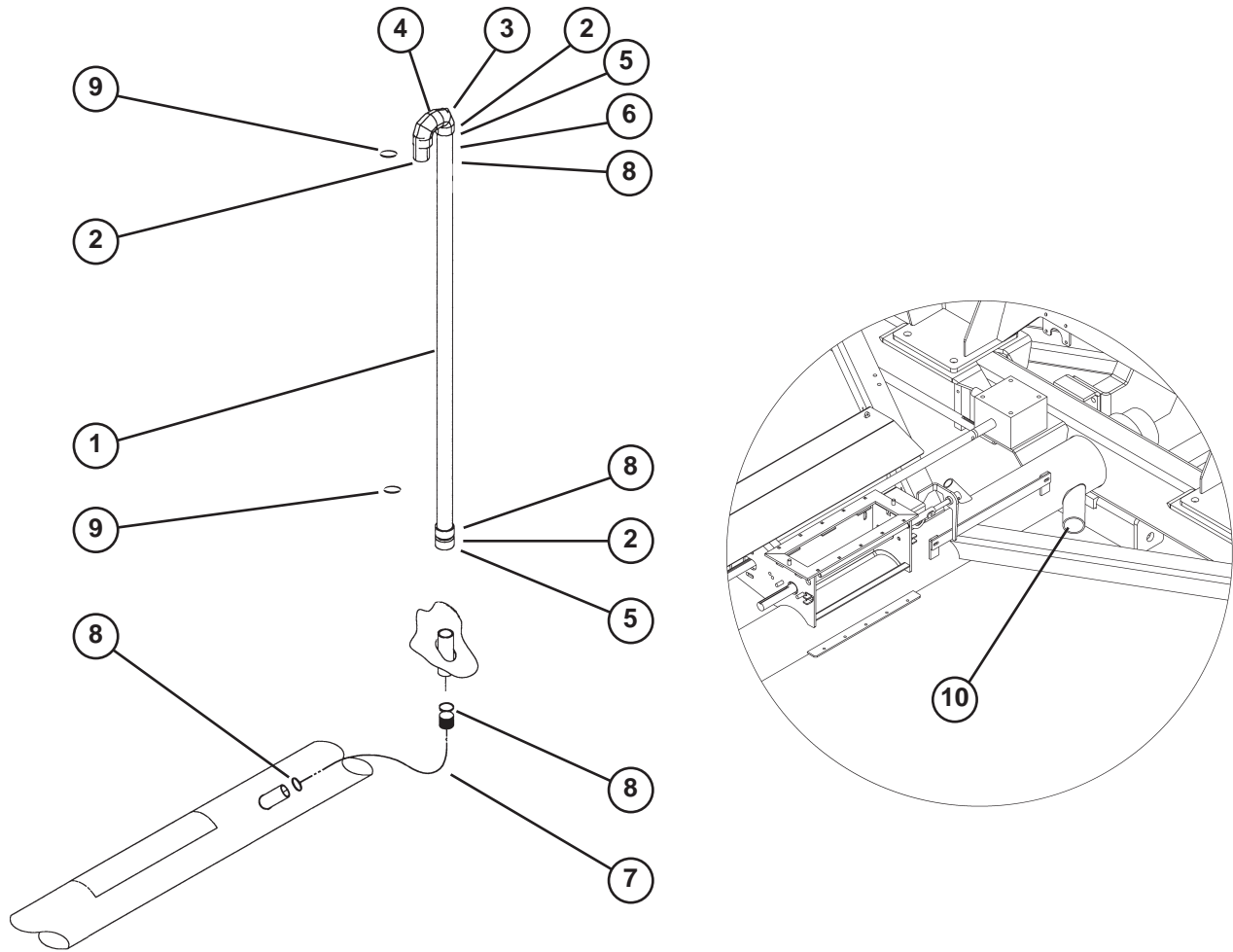
ASSY-TANK/RUNNING GEAR

Ref.	Part No.	Description	Qty.
1	65402	WLDMT-TANK 2800	1
	65938	WLDMT-TANK 3350	1
2	65406	WLDMT-RUNNING GEAR	1
3	65525	WLDMT-FRONT PANEL	1
4	65526	WLDMT-REAR PANEL	1
5	65512	GASKET-SEEDBOX .250	2
6	64504	SEALANT-PROGLAZE - OZ.	90
7	65816	WLDMT-AUGER MOUNT	1
8	1012060	BOLT-HEX: .75 X 2.00 NC GR5 ZP	14
9	1017000	NUT-TOPLOCK: .75 NC GR5 ZP	14
10	1030702	WASHER-FLAT: .75 ZP	14
11	1011606	BOLT-HEX: .50 X 1.25 NC GR5 ZP	29
12	1011608	BOLT-HEX: .50 X 1.75 NC GR5 ZP	11
13	1027461	NUT-TOPLOCK: .50 NC GR5 ZP	40
14	1011584	WASHER-FLAT: SAE .50 ZP	51
15	66043	BOLT-CRG: SS .250 X 1.25 NC	20
16	65695	WASHER-FLAT: .250 SS	20
17	1033269	NUT-NYLOCK: .25 NC GR2 SS	20
18	65678	WLDMT-LADDER INSIDE 2800	2
	65942	WLDMT-LADDER INSIDE 3350	2
19	1033271	BOLT-HEX: SS .38 X 1.00 NC	4
20	1033268	NUT-NYLOCK: .38 NC GR2 SS	4
21	65778	WASHER-FLAT: .375 SS	8
22	66549	KIT-LOW VOLUME TANK INSERT 2800 (OPTIONAL)	
	66550	KIT-LOW VOLUME TANK INSERT 3350 (OPTIONAL)	



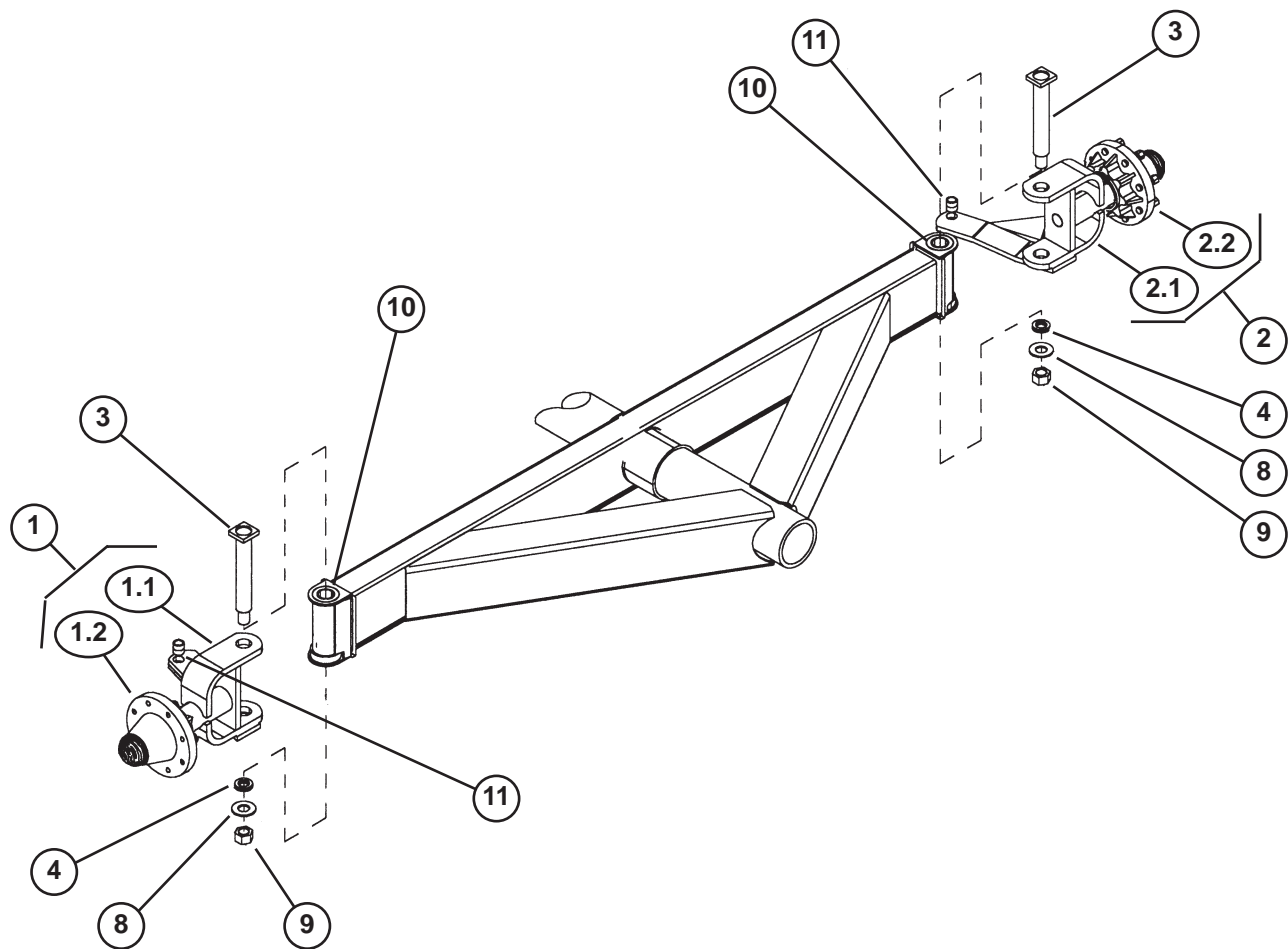
ASSY-AIRSTREAM SINGLE

Ref.	Part No.	Description	Qty.
1	1023159	GASKET .13 X 5.75 X 7-5" ID	1
2	65443	WLDMT-FLANGE & TUBE	1
3	1011606	BOLT-HEX: .50 X 1.25 NC GR5 ZP	4
4	65313	NUT-NYLOCK: .50 NC GR2 ZP	4



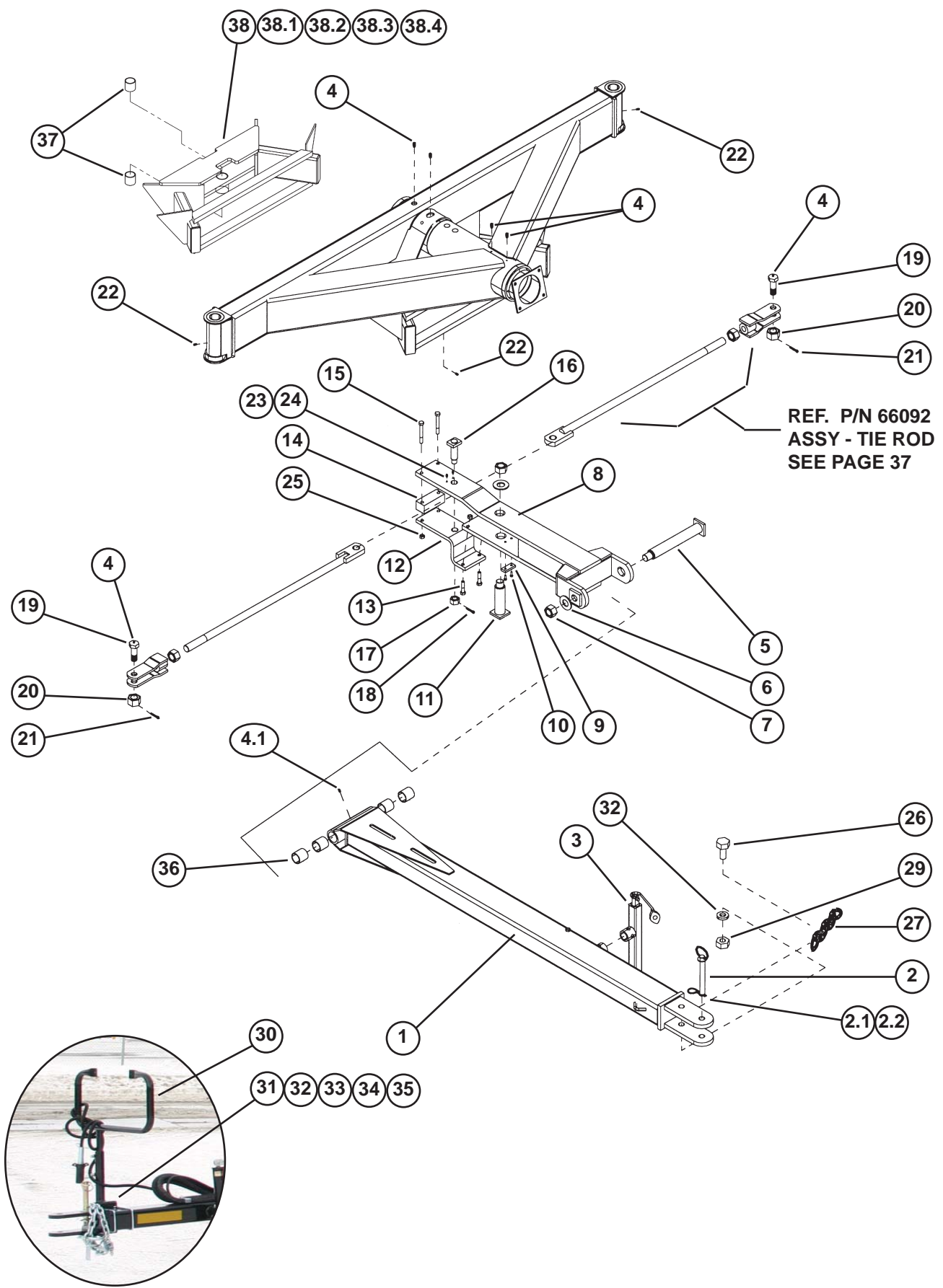
ASSY-PRESSURIZATION KIT

Ref.	Part No.	Description	Qty.
1	65880	HOSE-KANAFLEX 1.25" X INCH LENGTH (2800 AS)	61
		HOSE-KANAFLEX 1.25" X INCH LENGTH (3350 AS)	71
2	65881	PIPE-PVC 1.25" SCH 40 X 4"	4
3	65882	ELBOW-PVC 1.25" SCH 40 F X FG	4
4	65883	PIPE-PVC 1.25" SCH 40 X 3"	2
5	65884	ADAPTER-PVC 1.25" F GLUE X 1.25"	2
6	65885	FTG-PVC 1.25 MP X 1.25 MB	2
7	65880	HOSE-KANAFLEX 1.25" X INCH LENGTH	19.5
8	1013134	CLAMP-HOSE: S.S.#28 1.32-2.25	8
9	65917	CLAMP-HOSE: S.S.#40	4
10	65886	CAP-PVC 2" FP	1



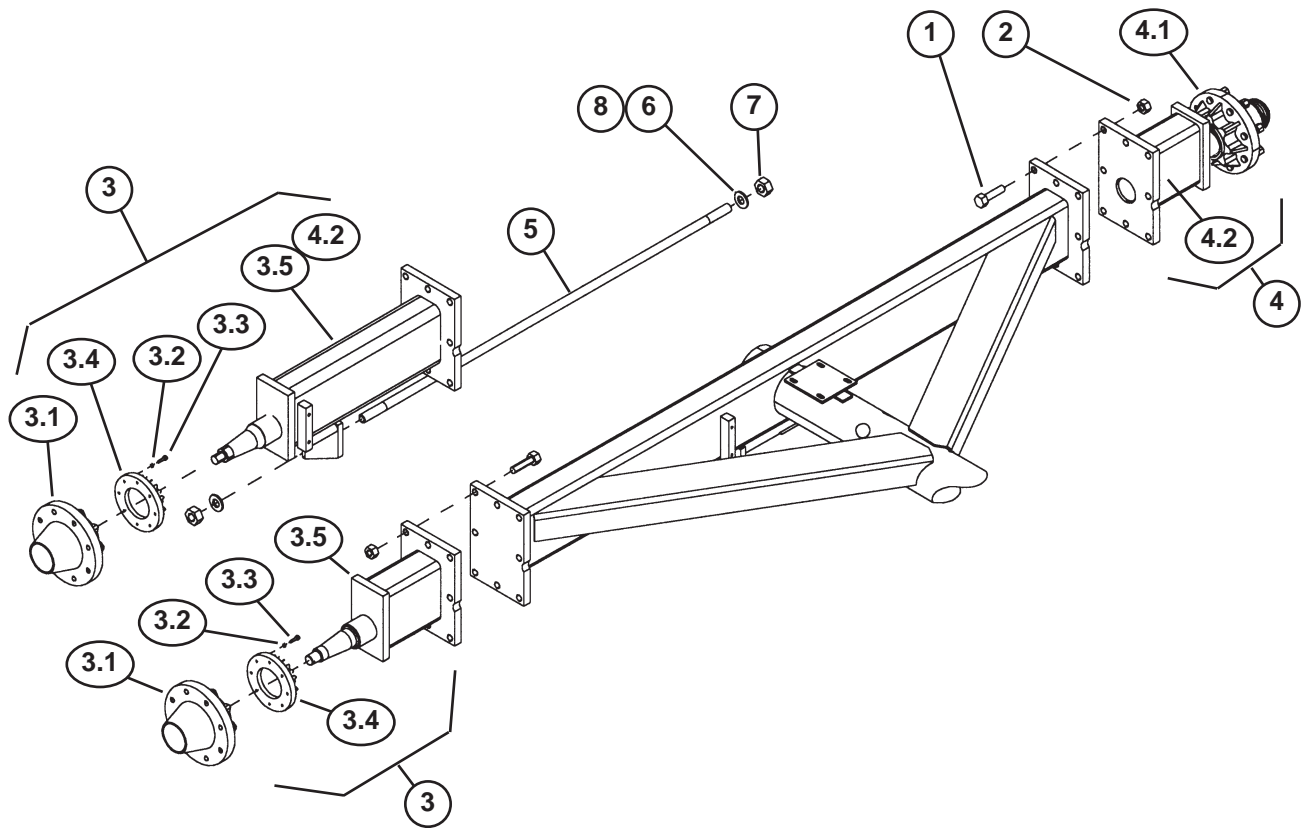
ASSY-AXLES FRONT

Ref.	Part No.	Description	Qty.
1	65448	ASSY-TRUNION & HUB RH	1
1.1	65429	WLDMT-TRUNION RH	1
1.2	1017759	ASSY-HUB	1
2	65449	ASSY-TRUNION & HUB LH	1
2.1	65430	WLDMT-TRUNION LH	1
2.2	1017759	ASSY-HUB	1
3	65439	WLDMT-KING PIN	2
4	1020688	BEARING-THRUST: TIMKEN T177	2
8	1020675	WASHER-STAR: INTERNAL 1.25" ZP	2
9	65864	NUT-JAM: 1.25 NF GR2 ZP	2
10	65877	BUSHING-MACHINED	4
11	65879	BUSHING-MACHINED	2



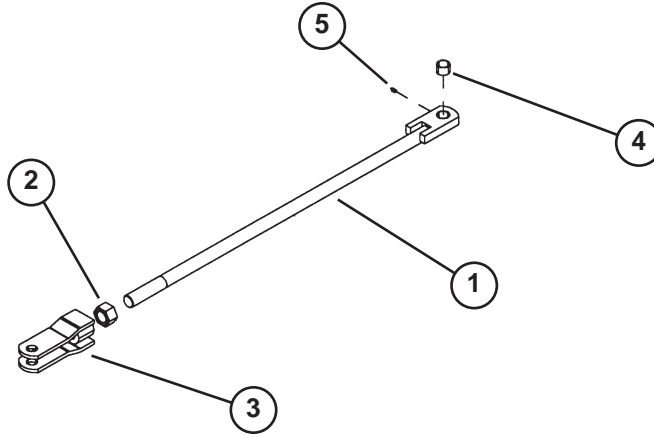
ASSY-DRAWPOLE & STEERING LINKAGE

Ref.	Part No.	Description	Qty.
1	65431	WLDMT-DRAWPOLE	1
2	1027881	HITCH-PIN	1
2.1	1016115	PIN-HAIR: .19 X 3.25 ZP	1
2.2	1016663	WASHER-FLAT: SAE 1.00 ZP	1
3	65829	JACK STAND 2000 LB	1
4	1011748	ZERK-GREASE: .25 UNF STRAIGHT	6
4.1	63424	ZERK-45 DEG, .25-28	1
5	65441	WLDMT-PIN TONGUE HINGE	1
6	1020675	WASHER-STAR: INTERNAL 1.25" ZP	4
7	65864	NUT-JAM: 1.25 NF GR2 ZP	4
8	65432	WLDMT-HITCH	1
9	65435	PLATE-STOP ZP	1
10	1011595	BOLT-HEX: .25 X .75 NC GR5 ZP	2
11	65442	WLDMT-KING PIN	1
12	65433	PLATE-HITCH	1
13	1017708	BOLT-HEX: .50 X 2.25 NC GR5 ZP	2
14	65434	BLOCK-SPACER	1
15	1032507	BOLT-HEX: .50 X 4.00 NC GR5 ZP	2
16	65440	WLDMT-KING PIN HITCH	1
17	65679	NUT-HEX: SLOT .875 NF GR5 ZP	1
18	1012375	PIN-COTTER: .19 X 1.50 NP	1
19	65438	BOLT-TIE ROD ZP	2
20	65680	NUT-HEX: SLOT 1-14 NS GR2 ZP	2
21	1013473	PIN-COTTER: .19 X 2.00 NP	2
22	1011747	ZERK-GREASE: .25 UNF 90°	3
23	0100615	BOLT-HEX: .19 X .75 NC GR5 ZP	2
24	65681	WASHER-LOCK: .19 ZP	2
25	1027461	NUT-TOPLOCK: .50 NC GR5 ZP	2
26	1018007	BOLT-HEX:1.00 X 3.00 NC GR5 ZP	1
27	58090	CHAIN-SAFETY 20200#	1
28	65317	WASHER-1.125 X 3.50 X .375 ZP	1
29	1016969	NUT-TOPLOCK: 1.00 NC GR5 ZP	1
30	65887	WLDMT-CRADLE HOSE SUPPORT	1
31	66010	WLDMT-MOUNT HOSE SUPPORT	1
32	66005	U-BOLT: .375 X 7.13 X 4.0 X 7.1	2
33	65720	NUT-NYLOCK: .38 NC GR2 ZP	4
34	1011602	BOLT-HEX: .38 X 1.50 NC GR5 ZP	2
35	1013519	NUT-JAM: .38 NC GR2 ZP	2
36	65621	BUSHING-MACHINED	4
37	65876	BUSHING-MACHINED	2
38	65760	WLDMT-HITCH PIVOT	1
38.1	1016598	BOLT-HEX: .75 X 2.50 NC GR5 ZP	8
38.2	1030702	WASHER-FLAT: .75 ZP	16
38.3	1012061	WASHER-LOCK: .75 ZP	8
38.4	1011620	NUT-HEX: .75 NC GR2 ZP	8



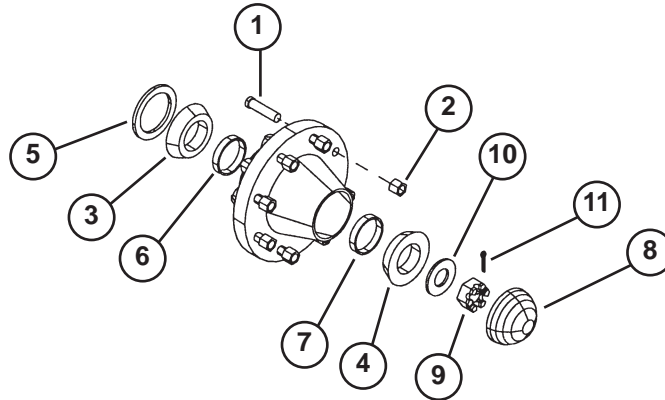
ASSY-AXLES REAR 150"

Ref.	Part No.	Description	Qty.
1	58369	BOLT-HEX: .75 X 3.50 NC GR5 ZP	16
2	1013834	NUT-NYLOCK: .75 NC GR2 ZP	16
3	65446	ASSY-HUB, SPINDLE & SPROCKET RH (150")	1
	65947	ASSY-HUB, SPINDLE & SPROCKET RH (120")	1
3.1	65450	ASSY-HUB: TAPPED	1
3.2	1013242	WASHER-LOCK: .25	8
3.3	1013940	BOLT: .25 X 1.25 NC ZP	8
3.4	65425	FLANGE & SPROCKET	1
3.5	65436	WLDMT-SPINDLE RH DRIVE (150")	1
	65943	WLDMT-SPINDLE RH (120")	1
4	65447	ASSY-HUB & SPINDLE LH (150")	1
	65186	ASSY-HUB & SPINDLE LH (120")	1
4.1	1017759	ASSY-HUB	1
4.2	65437	WLDMT-SPINDLE LH (150")	1
	65177	WLDMT-SPINDLE LH (120")	1
5	65683	ROD-TRUSS ZP (150" AXLE ONLY)	2
6	1020685	WASHER-FLAT: 1.00 ZP (150" AXLE ONLY)	4
7	1012664	NUT-HEX: 1.00 NC GR2 ZP (150" AXLE ONLY)	4
8	1013539	WASHER-LOCK: 1.00 ZP (150" AXLE ONLY)	4



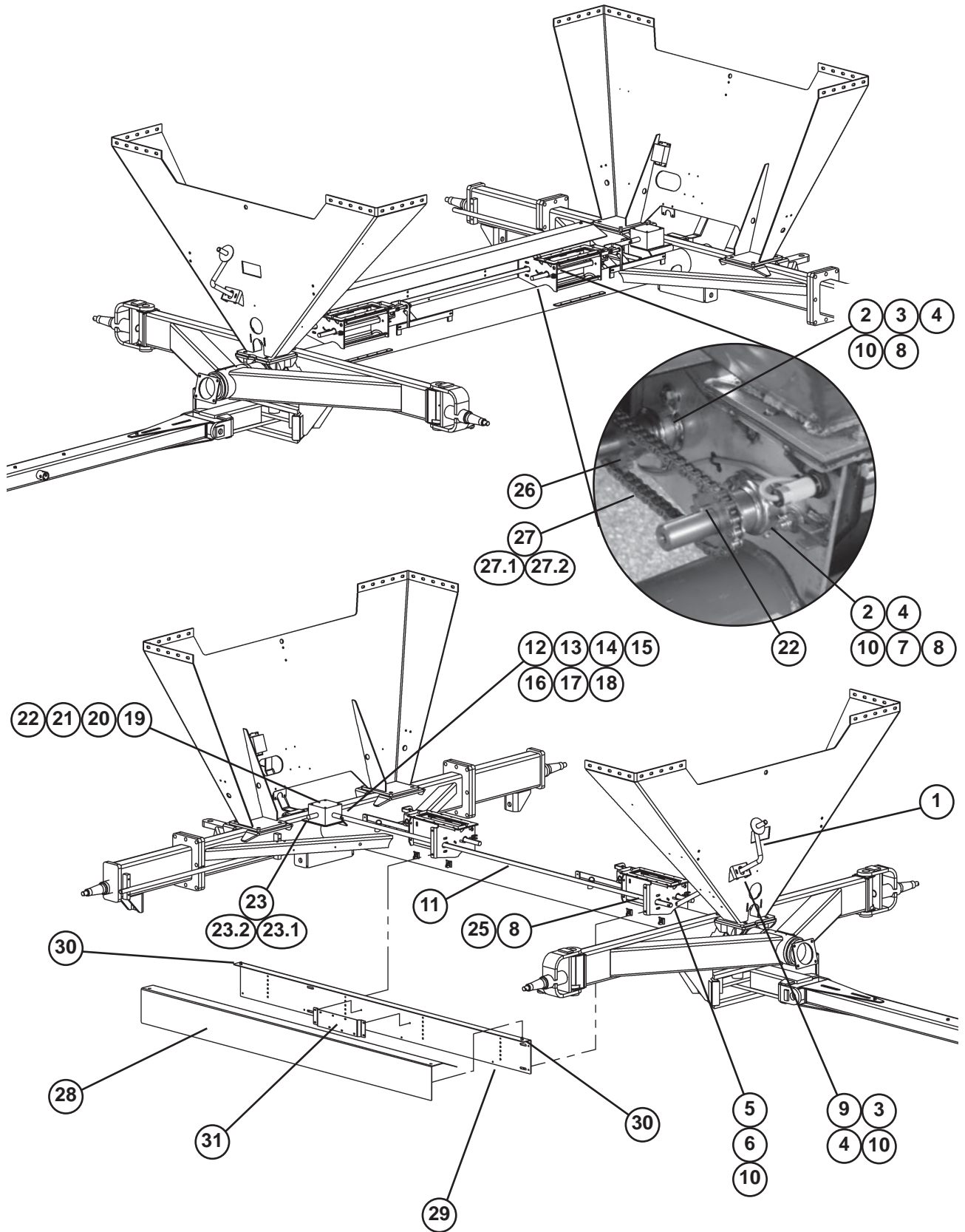
ASSEY-TIE ROD

Ref.	Part No.	Description	Qty.
1	65536	TIE ROD - W/BUSHING	1
2	65864	NUT-JAM: 1.25 NF GR2 ZP	1
3	65270	TIE ROD CLEVIS-ZP	1
4	65878	BUSHING-MACHINED	1
5	1011748	ZERK-STRAIGHT: .25 UNF	1



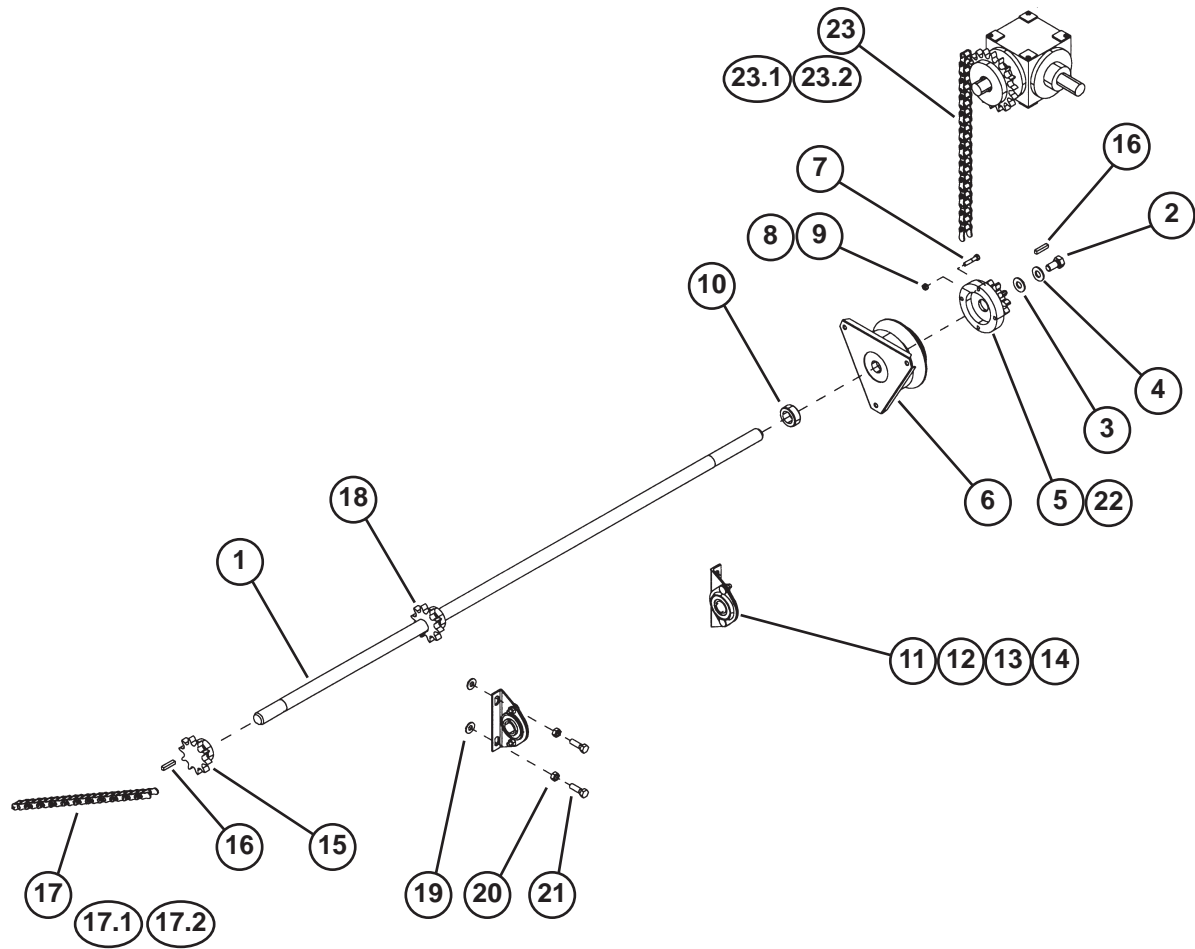
ASSEY-HUB

Ref.	Part No.	Description	Qty.
	65450	ASSEY-HUB: TAPPED FOR SPROCKET (INCLUDES 1-7)	1
	1017759	ASSEY-HUB (INCLUDES 1-7)	3
1	65944	STUD-LUG	8
2	1013470	NUT-BEVELED	8
3	65987	CONE-INNER	1
4	1012354	CONE-OUTER	1
5	1017764	SEAL	1
6	65948	CUP-INNER	1
7	1012359	CUP-OUTER	1
8	53624	CAP-HUB	1
9	1030726	NUT-SPINDLE	1
10	1030728	WASHER-SPINDLE	1
11	1030797	PIN-COTTER	1



ASSY-METER DRIVELINE

Ref.	Part No.	Description	Qty.
1	65688	WLDMT-METER CRANK	1
2	1012986	BEARING-FLANGE/A	6
3	1033271	BOLT-HEX: SS .375 X 1.00	8
4	1033262	WASHER-FLAT: SAE .38 SS	20
5	65826	U-JOINT-DRILLED	1
6	65693	BOLT-HEX: SS .375 X 2.50 NC	2
7	1012978	WASHER-RUBBER	4
8	65694	COLLAR-SET: 1.00 SS	4
9	1030961	BEARING FLANGE ASSY MODIFIED	1
10	1033268	NUT-NYLOCK: .38 NC GR2 SS	22
11	65567	SHAFT-METER DRIVE	1
12	65552	COUPLER	1
13	1013218	PIN-SHEAR: BRASS	1
14	1013221	STRIP-SHEAR PIN ZP	1
15	65692	BOLT-HEX: SS .250 X 0.50 NC	1
16	65695	WASHER-FLAT: .250 SS	1
17	65696	WASHER-LOCK: SS .25	1
18	1013044	SCREW-SET: .25 X .25 NC GR8 NP	1
19	65649	GEARBOX-PRAIRIE (1:1) PAINTED	1
20	1033271	BOLT-HEX: .38 X 1.00 NC GR5 SS	4
21	65706	WASHER-LOCK: .38 SS	4
22	65715	KEY .250 X .250 X 1.250 SS	6
23	65699	CHAIN-ROLLER 60-1R-031 NICKEL PLT	1
23.1	65701	LINK-CONNECTOR #60 NICKEL PLT	1
23.2	65725	LINK-OFFSET #60 NICKEL PLATE	1
24	1011748	ZERK-GREASE: .25 UNF STRAIGHT	7
25	1011747	ZERK-GREASE: .25 UNF 90°	1
26	65698	SPROCKET-SS #40	4
27	65700	CHAIN-ROLLER 40-1R-039 SS	2
27.1	65697	LINK-CONNECTOR SS #40	2
27.2	65726	LINK-OFFSET #40 SS	2
28	65452	COVER-HOSE MOUNT	1
29	66006	WLDMT-SHIELD BOX	1
30	1012901	PIN-HAIR: .13 X 2.50 ZP	2
31	65812	PLATE-MODULE MNT	1

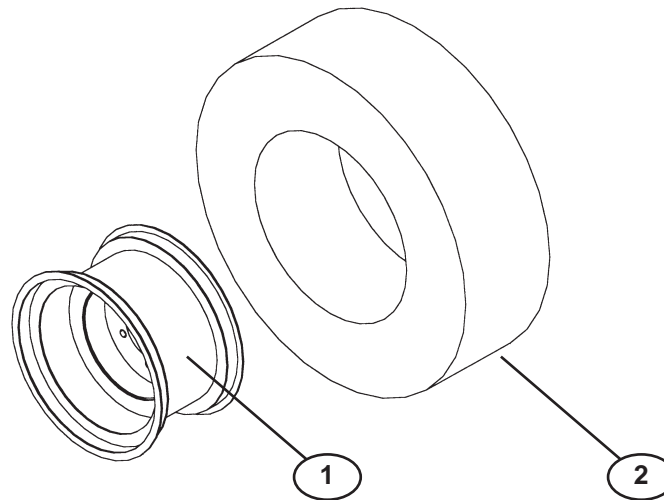


ASSY-CLUTCH SHAFT 120"/150"

Ref.	Part No.	Description	Qty.
1	65945	SHAFT-CLUTCH DRIVE 120" ZP	1
	65654	SHAFT-CLUTCH DRIVE 150" ZP	1
2	1011096	BOLT-HEX: .50 X 1.00 NC GR5 ZP	1
3	1014443	WASHER-FLAT: .50 ZP	1
4	1011581	WASHER-LOCK: .50 ZP	1
5	65553	ASSY-ADAPTER	1
6	1021090	CLUTCH-ELECTRIC	1
7	1013940	BOLT-HEX: .25 X 1.25 NC GR5 ZP	4
8	1011587	NUT-HEX: .25 NC GR2 ZP	4
9	1013242	WASHER-LOCK: .25 ZP	4
10	1013418	COLLAR-SET: 1.00 ZP	1
11	1018571	BEARING-PILLOW BLOCK	2
12	65702	BOLT-CRG: .31 X 0.75 NC GR5 ZP	4
13	1029115	WASHER-LOCK: .31 ZP	4
14	1011575	NUT-HEX: .31 NC GR2 ZP	4
15	1012976	SPROCKET-60BS10 X 1.00 MARTIN	1
16	1012975	KEY .250 X .250 X 1.250	2
17	65703	CHAIN-ROLLER 60-1R-027 NICKEL PL	1
17.1	65704	LINK-CONNECTOR 60 NICKEL PLATED	1
17.2	65724	LINK-OFFSET #60 NICKEL PLATE	1

ASSY-CLUTCH DRIVELINE (Ref. Page 40)

Ref.	Part No.	Description	Qty.
18	66075	SPROCKET- 60BS12 X 1.00	1
19	1033262	WASHER-FLAT: SAE .38 ZP SS	12
20	65706	WASHER-LOCK: .38 ZP SS	4
21	1033271	BOLT-HEX: .38 X 1.00 NC GR5 ZP SS	4
22	66181	BUSHING-ADAPTER	1
23	65699	CHAIN-ROLLER 60-1R-031 NICKEL PLT	REF
23.1	65701	LINK-CONNECTOR #60 NICKEL PLT	REF
23.2	65725	LINK-OFFSET #60 NICKEL PLATE	REF

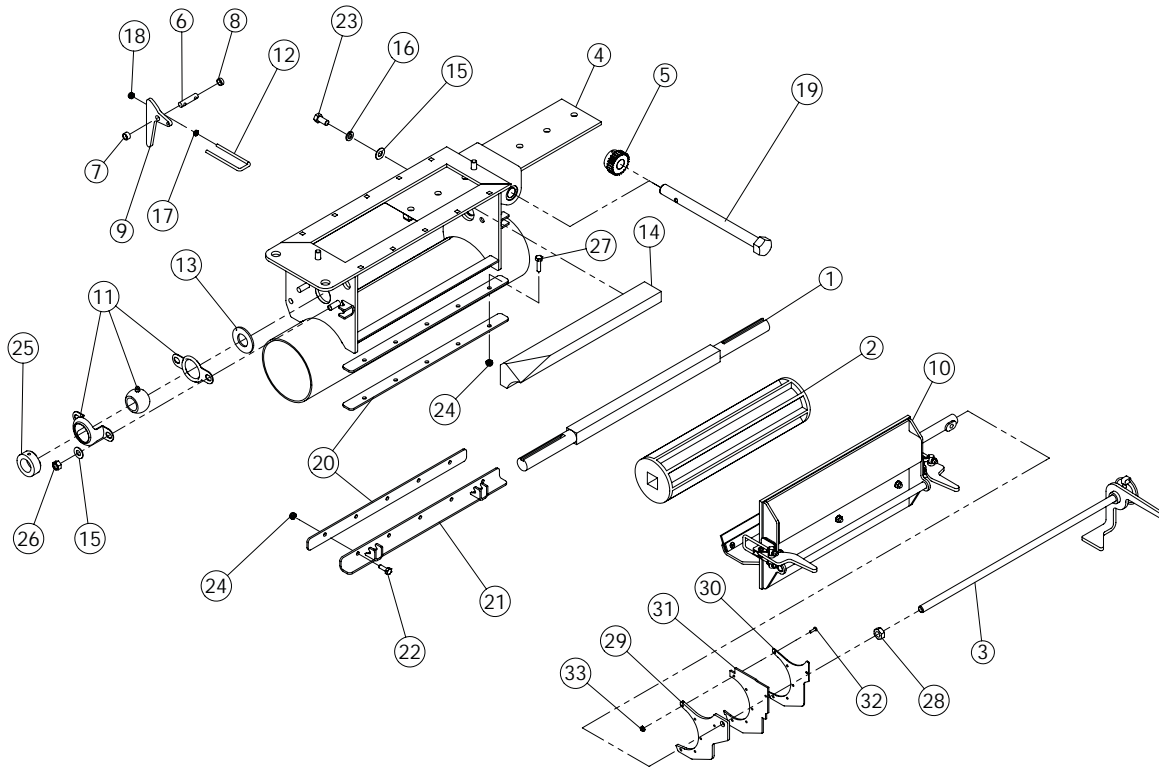


ASSY-W&T 18.4X26 R1 8PLY, 16X26X8

Ref.	Part No.	Description	Qty.
	65685	TIRE-MNTD: 18.4X26 R1 8PLY	4
1	1020719	WHEEL: 16X26 - 8 BOLT	1
2	1030988	TIRE: 18.4X26 R1 8 PLY	1
3	1021069	SPROCKET-GEARBOX: 60BS17 X 1.00 MARTIN (NOT SHOWN)	1

ASSY-W&T 23.1X26 R1 8PLY, 20X26X8

Ref.	Part No.	Description	Qty.
	65687	TIRE-MNTD: 23.1X26 R1 10-PLY	4
1	1021068	WHEEL: 20X26 - 8 BOLT	1
2	1029689	TIRE: 23.1X26 R1 10 PLY	1
3	1025228	SPROCKET-GEARBOX: 60BS15 X 1.00 (NOT SHOWN)	1



METER BOX ASSEMBLY

Ref.	Part No.	Description	Qty.
1	65650	SHAFT-METER ROLL	1
2	65705	WLDMT-METER ROLL - HIGH VOLUME	1
	1012608	WLDMT-METER ROLL - MEDIUM VOLUME	
	33851	WLDMT-METER ROLL - LOW VOLUME	
3	65651	ASSY-FLOW CONTROL ROD	1
4	65632	WLDMT-TOP SLIDE IN DOOR	1
5	65707	PINION-SS	1
6	65639	SHAFT-METER LATCH	1
7	66357	BUSHING-SPACER HANDLE LARGE	2
8	66362	BUSHING-SPACER HANDLE SMALL	2
9	65640	PLATE-CLEANOUT CLAMP HANDLE	2
10	66306	ASSY-MB DOOR W/FLOW PLATE	1
11	1012986	BEARING-FLANGE/A	2
12	65655	U-BOLT-SS .1875 X 3.25 X .875 X 3.25	2
13	1012978	WASHER-RUBBER	2
14	66062	BLOCK-METER TOP	1
15	1033262	WASHER-FLAT: SAE SS .38	6
16	1011586	WASHER-LOCK: .38 ZP	2
17	65348	NUT-HEX: #10-24 SS	4
18	65712	NUT-NYLOCK: #10-24 SS	4

METER BOX ASSEMBLY (continued)

Ref.	Part No.	Description	Qty
19	65630	BOLT-PIN ADJUSTMENT	1
20	65629	PLATE-CLEANOUT RETAINER	2
21	65626	WLDMT-ANGLE LATCH	1
22	1033270	BOLT-HEX: SS .25 X .75 NC	5
23	66375	BOLT-HEX: XX .38 X 1.00 NC	2
24	1033269	NUT-NYLOCK: SS .25 BC GR2	10
25	65694	COLLAR-SET: 1.00 SS	1
26	1011576	NUT-HEX: .38 NC GR2 ZP	4
27	66077	BOLT-HEX: SS .25 X 1.00 NC	5
28	1032190	NUT-JAM: .50 NC SS	1
29	66307	PLATE-MB FLOW CONTROL	1
30	66309	PLATE-MB FLOW CONTROL	1
31	66346	SEAL-RUBBER FLOW CONTROL	1
32	1032093	SCREW-P-H: #6 X .50 NC SS	6
33	1032094	NUT-K-LOCK: #6 NC SS	6
34	1032044	SCALE-CALIBRATION KIT (NOT SHOWN)	1
35	1032048	BAG-CALIBRATION KIT (NOT SHOWN)	1
36	64503	GLUE-MASTERBRAND GASKET (NOT SHOWN)	1.75
37	66098	ASSY-CLEANOUT DOOR (NOT SHOWN)	2
38	65708	DOOR-RUBBER CLEANOUT (NOT SHOWN)	1
39	66095	ASSY-METER BOX DOOR CLAMP (NOT SHOWN)	2
40	66096	ASSY METER BOX DOOR (NOT SHOWN)	2
41	66097	ASSY-DEFLECTOR (NOT SHOWN)	2

AIR SYSTEM - SENSORS, MODULES & CABLES - GR99

Ref.	Part No.	Description	Qty.
1	66351	BRACKET-SPEED SENSOR	3
2	66376	TUBE-SPACER SPEED SENSOR ZP	1
3	1032920	SENSOR-MB TURCH (WITH END)	2
4	65891	SCREWDRIVER-FLOW SENSOR	2
5	66251	PLATE-HOSE COVER PC	1
6	1015174	BOLT-HEX: .38 X 2.50 NC GR5 ZP	5
7	1011828	WASHER-FLAT .38 ZP	1
8	1011586	WASHER-LOCK: .38 ZP	5
9	1011576	NUT-HEX: .38 NC GR2 ZP	5
10	65840	ASSY-BIN LEVEL SENSOR BRACKET	2
11	66226	CLUTCH MODULE #9AGRCPM	1
12	66227	6 SENSOR MODULE #9AGR6CH	1
13	66228	SHAFT SENSOR #9KGRSSN	2
14	66229	SHAFT SENSOR #9KGRSPD	1
15	66230	SPEED SENSOR #9KGRSPD	1
16	66231	BIN LEVEL SENSOR #9KBNSEN06	2
17	34098	5 METER MAIN HARNESS CABLE	1
18	66242	.5 METER MINIDIN CABLE #MDXM005	2
19	66238	5 METER MINIDIN CABLE #MDXM050	1
20	66243	3 METER MODULE CABLE #GRXM030	2
21	66230	FAN SENSOR	1

TRACTOR - SENSORS, MODULES & CABLES - GR99

Ref.	Part No.	Description	Qty.
1	66239	CAB UNIT DISPLAY #9AGR99H	1
2	66240	SWITCH BOX #9AGRSCB	1
3	66241	POWER MODULE #9AGRXBX	1
4	34162	1 METER MINI CABLE	2
5	66235	2 METER MINIDIN CABLE #MDXM020	1
6	66236	3 METER MINIDIN CABLE #MDXM030	1
7	66237	4 METER MINIDIN CABLE #MDXM040	1
8	34170	6 METER MINI CABLE	1
9	66242	.5 METER MINIDIN CABLE #MDXM005	2
10	66243	3 METER MODULE CABLE #GRXM030	2
11	34173	MONITOR BRACKET	1

DOUBLE DISC DRILL - SENSORS, MODULES & CABLES - GR99

Ref.	Part No.	Description	Qty.
1	66190	3.0 METER MODULE CABLE	1
2	66191	5.0 METER MODULE CABLE	1
3	66192	4.0 METER MINIDIN	1
4	34025	ART FLOW MODULE	1
5	33689	1 1/4 SENSOR FOR ART SYSTEM	10
6	33717	10 FT. EXTENSION CABLE	5
7	33718	20 FT. EXTENSION CABLE	4
8	33716	4 FT EXTENSION HARNESS	7
9	66464	PLATE-MODULE MOUNT	1
10	66353	SCREW-P-H: .19 X .50 NC SS	4
11	1032059	NUT-K-LOCK: 18-8 SS .19 NC	4
12	33719	ART Y CABLE	1
13	33730	GR99 WORK SWITCH	1

AIR SYSTEM - SENSORS, MODULES & CABLES - ART 240

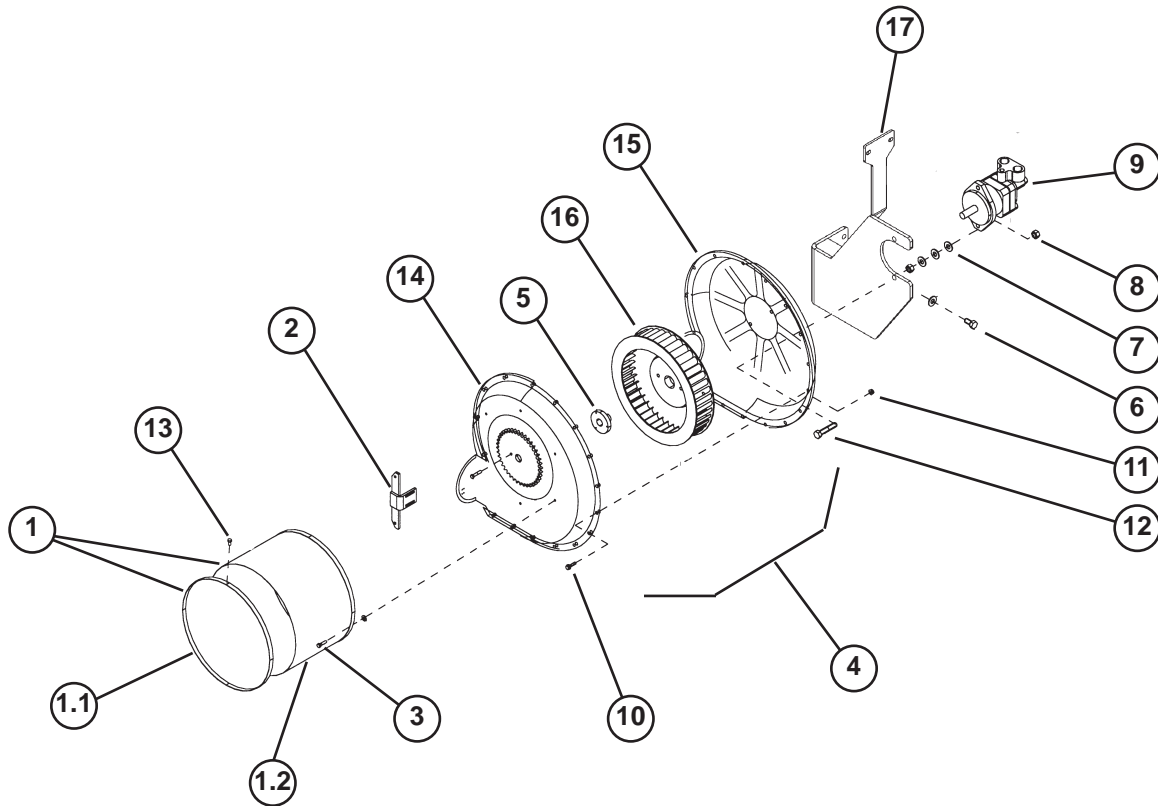
Ref.	Part No.	Description	Qty.
1	67143	BRACKET-SPEED SENSOR ART 240	1
2	1011600	BOLT-HEX: .38 X 1.00 NC GR5 ZP	1
3	1011828	WASHER-FLAT: .38 ZP	1
4	1016999	NUT-TOPLOCK: .38 NC GR5 ZP	1
5	66507	SENSOR-SPEED/SHAFT ART 240	3
6	1033270	BOLT-HEX: SS .25 X .75 NC	3
7	65695	WASHER-FLAT: .25 SS	3
8	1033269	NUT-NYLOCK: SS .25 NC GR2	3
9	66587	BRACKET-SHAFT SENSOR ART 240	2
10	1033271	BOLT-HEX: SS .38 X 1.00 NC	2
11	65778	WASHER-FLAT: .38 SS	2
12	65706	WASHER-LOCK: SS .38	2
13	1032089	NUT-HEX: SS .38 NC	2
14	66511	SENSOR-MB TURCK (WITH END)	2
15	66632	ASSY-BIN LEVEL SENSOR BRACKET ART 240	2
16	66509	SENSOR-BIN ART 240	2
17	66350	BRACKET-FAN SPEED S3ENSOR	1
18	66510	SENSOR-FAN ART 240	1
19	1013940	BOLT-HEX: .25 X 1.25 NC GR5 ZP	2
20	1020416	WASHER-FLAT: .25 ZP	1
21	34484	HARNESS-TANK ART 240	1
22	66585	CLIP-WIRE HARNESS PURSE LOCK WHITE	10
23	1013122	TIE-NYLON CALBE 50# X 15.5"	10

TRACTOR - SENSORS, MODULES & CABLES - ART 240

Ref.	Part No.	Description	Qty.
1	66506	DIPLAY UNIT ART 240	1
2	34478	HARNESS-TRACTOR MAIN ART 240	1
3	34573	HARNESS-TRACTOR CLUTCH BOX ART 240	1
4	67173	COLLAR-LPLASTIC W/MAGNETS	1

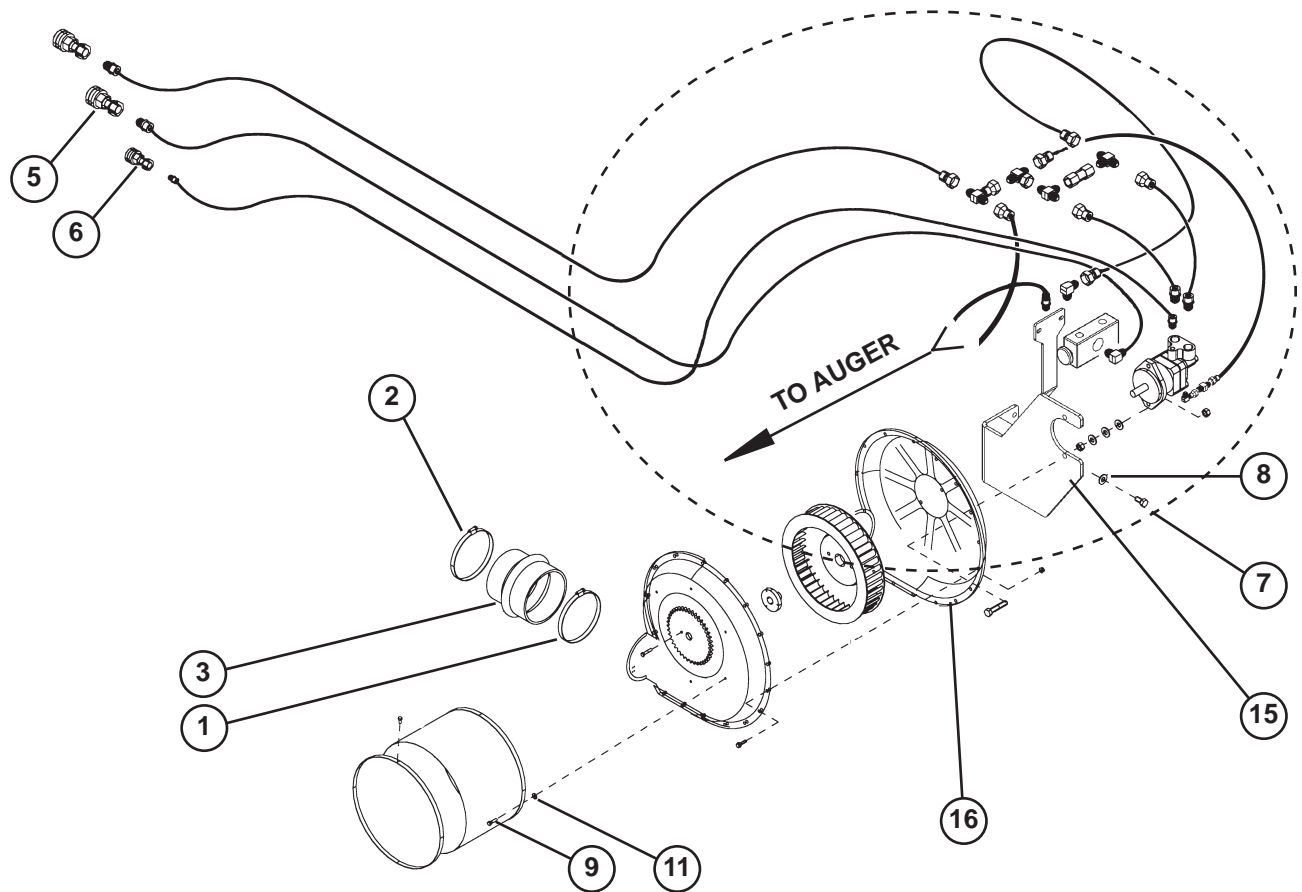
AIR TILL DRILL - SENSORS, MODULES & CABLES-ART 240

Ref.	Part No.	Description	Qty.
1	33687	SENSOR-0 POPLULATION ART 240 1"	48
2	33718	CABLE-SENSOR LOOP 20'	4
3	65378	TIE-NULON CABLE 50# X 11.75"	20
4	1026358	HOSE-CLAMP #16 0.81-1.50	96
5	34480	HARNESS-IMPLEMENT ART 240	1
6	34568	CABLE-EXT BLOCKAGE FEMALE ART 240	1
7	34572	CABLE-EXT BLOCKAGE MALE ART 240	1



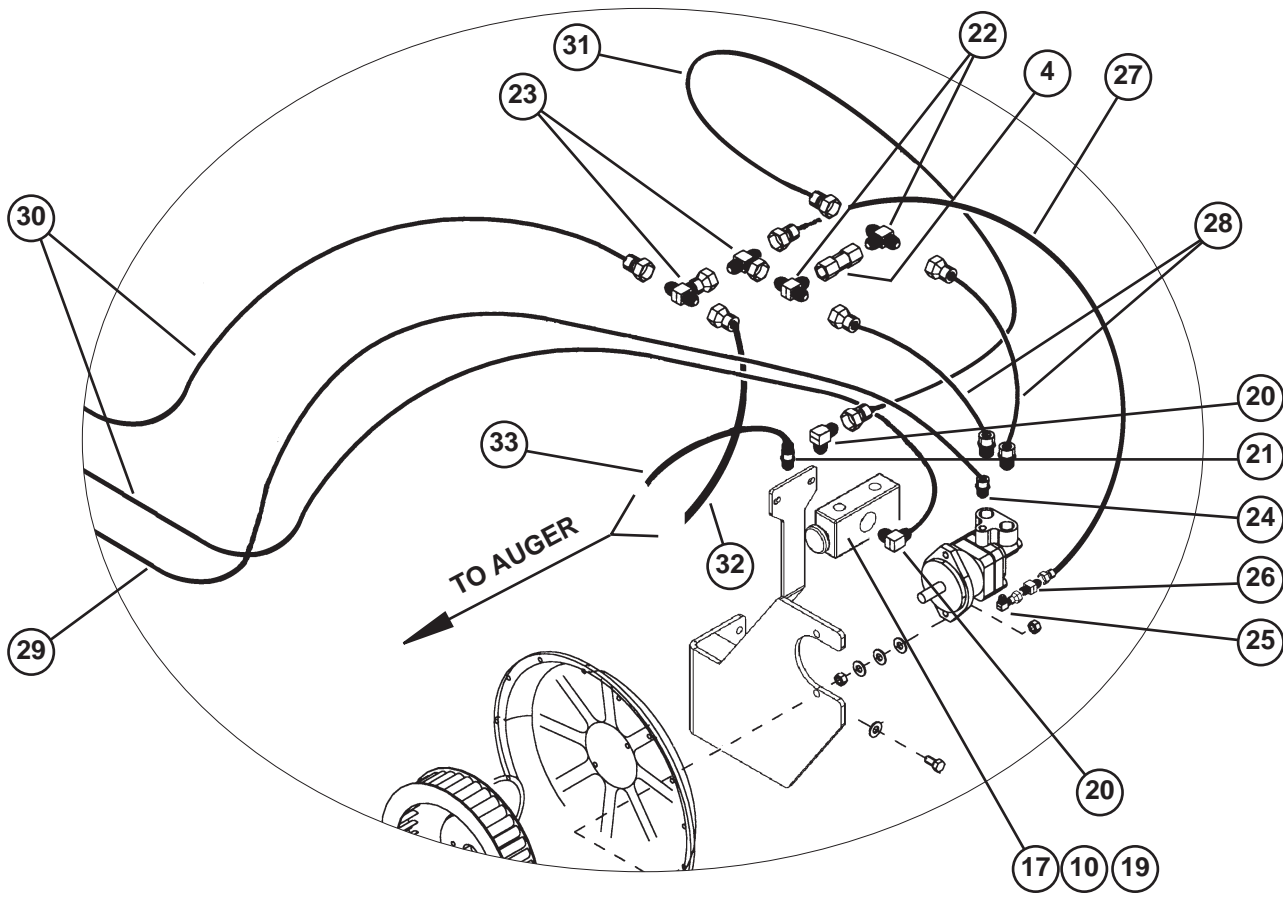
ASSY-BLOWER

Ref.	Part No.	Description	Qty.
1	1020801	SCREEN 6" (INCLUDES REF. 1.1, 1.2, 13)	1
1.1	1020540	SCREEN COVER	1
1.2	1020543	SCREEN WELD	1
2	66350	BRACKET-FAN SPEED SENSOR	1
3	1013940	BOLT-HEX: .25 X 1.25 NC GR5 ZP	2
4	1020418	FAN-HYDRAULIC DRIVE 6"	1
5	1020459	BUSHING 20MM	1
6	1011608	BOLT-HEX: .50 X 1.75 NC GR5 ZP	2
7	1011581	WASHER-LOCK: .50 ZP	6
8	1011577	NUT-HEX: .50 NC GR2 ZP	4
9	66244-1	MOTOR-HYDRAULIC PAINTED	1
10	63671	BOLT-FLG: .25 X 1.00 NC GR5 ZP	15
11	65349	NUT-FLANGE: .25 NC GR5 ZP	15
12	1017708	BOLT-HEX: .50 X 2.25 NC GR5 ZP	2
13	1020555	SCREW-SHEETMETAL: .25 X .50 HEX HD	4
14	33521	HOUSING-INLET	1
15	33512	HOUSING-DRIVE	1
16	33497	ROTOR	1
17	65718	MOUNT-BLOWER	1



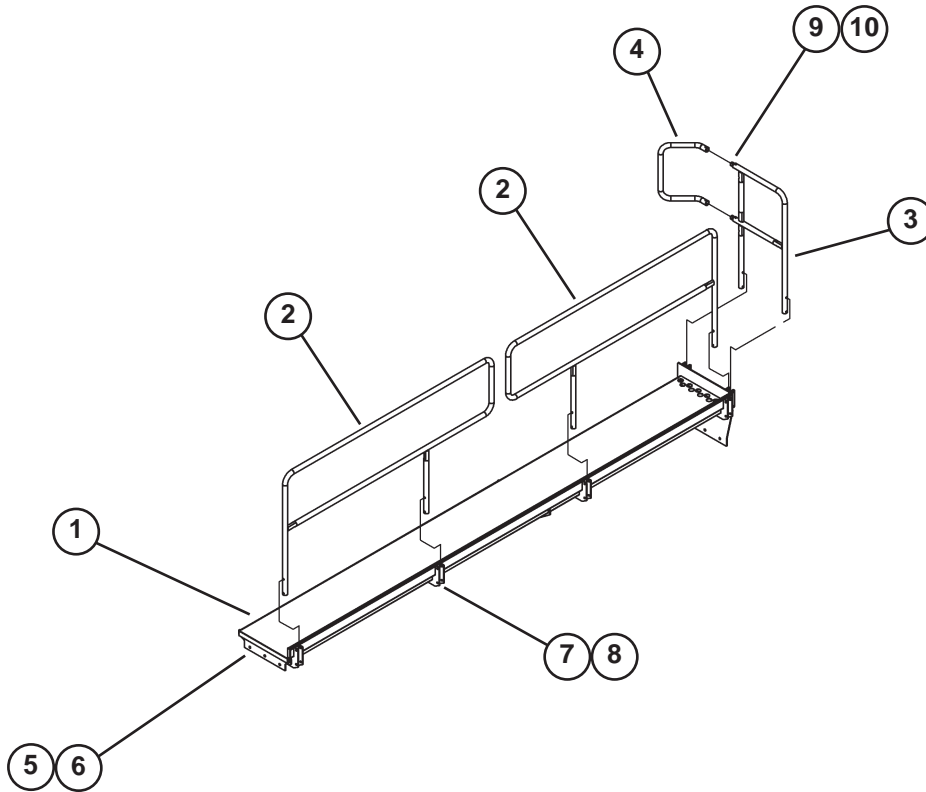
ASSY-BLOWER HYDRAULIC

Ref.	Part No.	Description	Qty.
1	1016416	CLAMP-HOSE: #96 S.S. 5.56 - 6.50	1
	66221	CLAMP-HOSE: #104 S.S. 5.56 - 6.50 (REPLACES 1016416)	1
2	1012455	CLAMP-HOSE: #72 S.S. 5.125 - 6.00	1
	1026256	CLAMP-HOSE: #88 S.S. 5.125 - 6.00 (REPLACES 1012455)	1
3	1014892	HOSE-HUMP REDUCER	1
4	65857	VALVE-CHECK	1
5	65323	QUICK COUPLING-MALE -12-12	2
6	65324	QUICK COUPLING-MALE -8-10	1
7	1021800	BOLT-HEX: .38 X .50 NC GR5 ZP	2
8	1011586	WASHER-LOCK: .38 ZP	2
9	1013423	BOLT-HEX: .25 X 1.00 NC GR5 ZP	2
10	1013239	BOLT-HEX: .38 X 3.00 NC GR5 ZP	2
11	1020416	WASHER-FLAT .25 ZP	10
12	1013242	WASHER-LOCK: .25 ZP	8
13	65814	CLAMP-HOSE 4.375 ZP (NOT SHOWN)	8
14	50714	1023147 CLAMP 1/2" ZP (NOT SHOWN)	4
15	65718	WLDMT-FAN MOUNT	1
16	64504	SEALANT-PROGLAZE	20



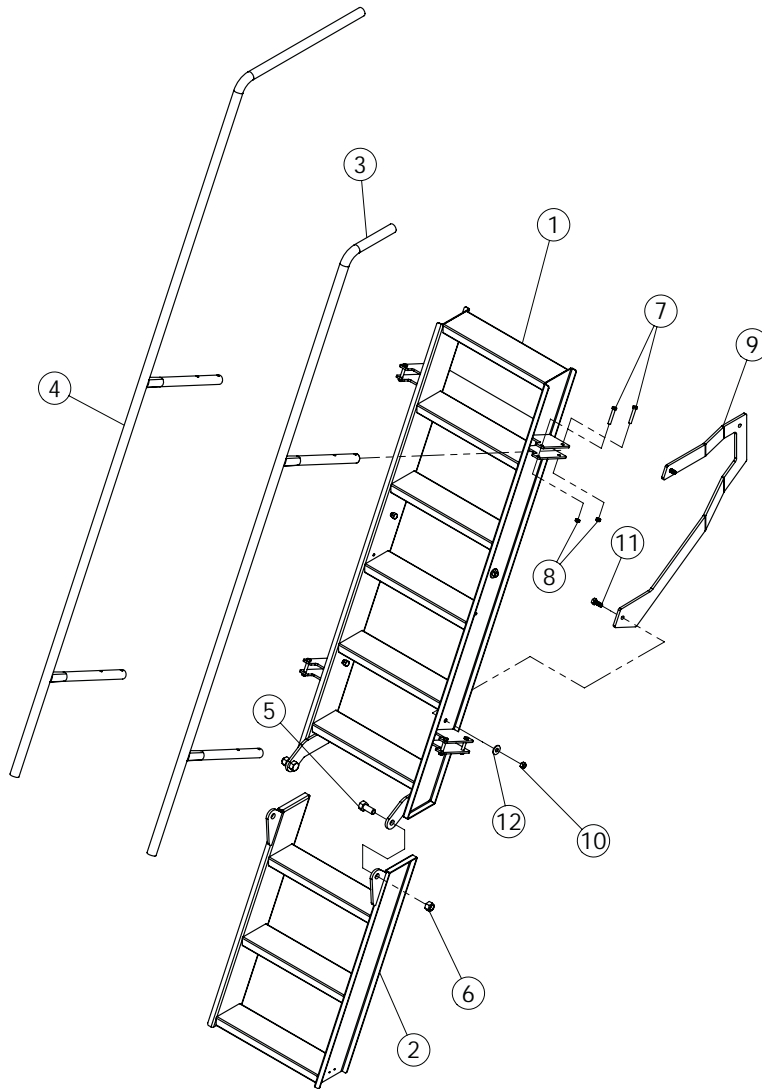
ASSY-BLOWER HYDRAULIC (continued)

Ref.	Part No.	Description	Qty.
17	65846	VALVE-SELECTOR PAINTED	1
19	1016999	NUT-TOPLOCK: .38 ZP	4
20	64060	FTG-ELBOW: 12MB-12MJ-90	2
21	65918	FTG-ADAPTER: 12MB-12MJ	1
22	65899	FTG-TEE: 12MJ-12MJ-12MB	2
23	59053	FTG-TEE: 12MJ-12MJ-12FJX	2
24	1019756	FTG-ELBOW: 6MB-8MJ-90	1
25	65995	FTG-ELBOW: 6MB-6FPX-90	1
26	58858	FTG-RESTRICTOR: 6MP-6FPX .064	1
27	65895	HOSE: .50 X 036 12FJX-6MP	1
28	65893	HOSE: .75 X 018 12FJX-12MB	2
29	1017135	HOSE: .50 X 312" 8FJX-8MP	1
30	65894	HOSE: .75 X 310 12FJX-12MP	2
31	64062	HOSE: .75 X 038 12FJX-12FJX	1
32	65897	HOSE: .50 X 240 12FJX-12FJX	1
33	65898	HOSE: .50 X 240 12FJX-12FJX-90	1



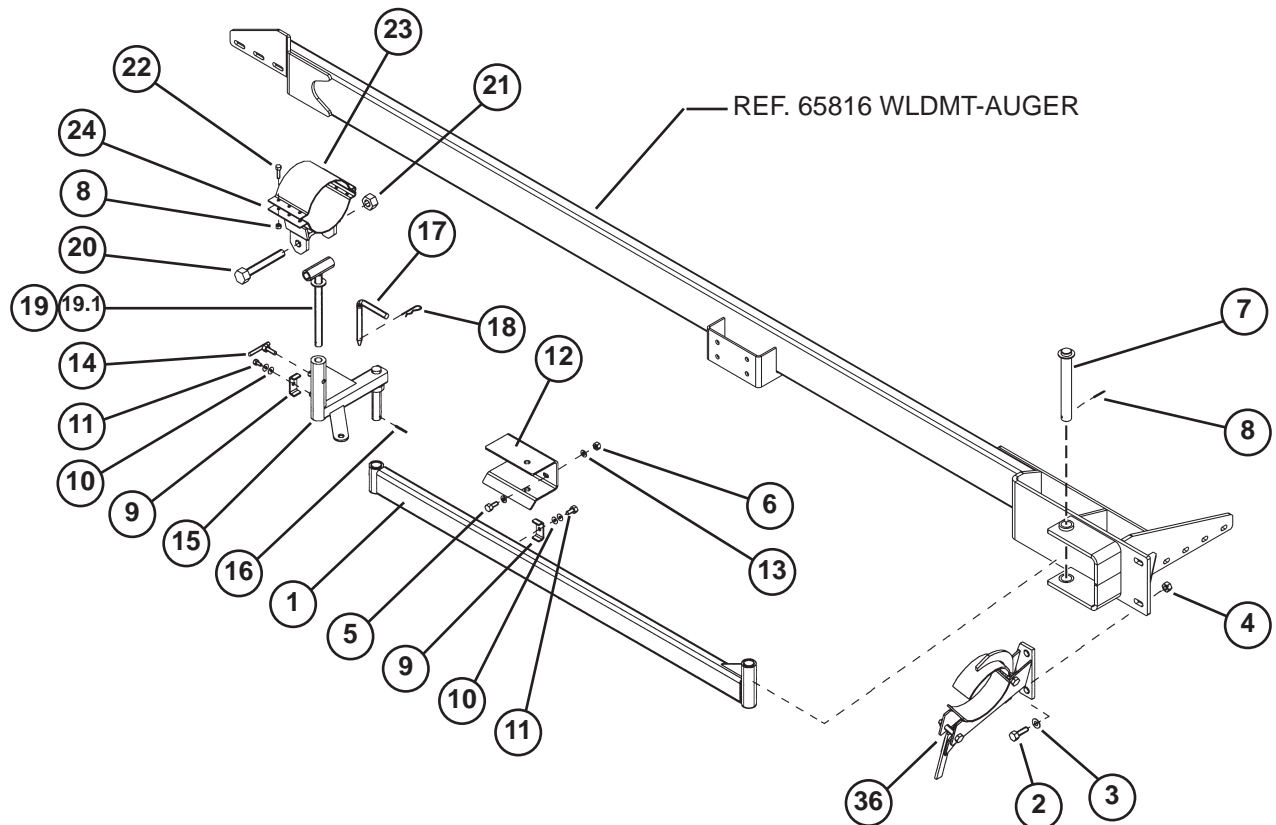
ASSY-CATWALK & HANDRAILS

Ref.	Part No.	Description	Qty.
1	65589	WLDMT-CATWALK	1
2	65598	WLDMT-SIDE RAIL	2
3	65601	WLDMT-FRONT RAIL	1
4	65606	TUBE-FRONT RAILING	1
5	1011606	BOLT-HEX: .50 X 1.25 NC GR5 ZP	9
6	1027461	NUT-TOPLOCK: .50 NC GR5 ZP	9
7	1015174	BOLT-HEX: .38 X 2.50 NC GR5 ZP	12
8	1016999	NUT-TOPLOCK: .38 NC GR5 ZP	12
9	1011603	BOLT-HEX: .38 X 1.75 NC GR5 ZP	2
10	1016999	NUT-TOPLOCK: .38 NC GR5 ZP	2



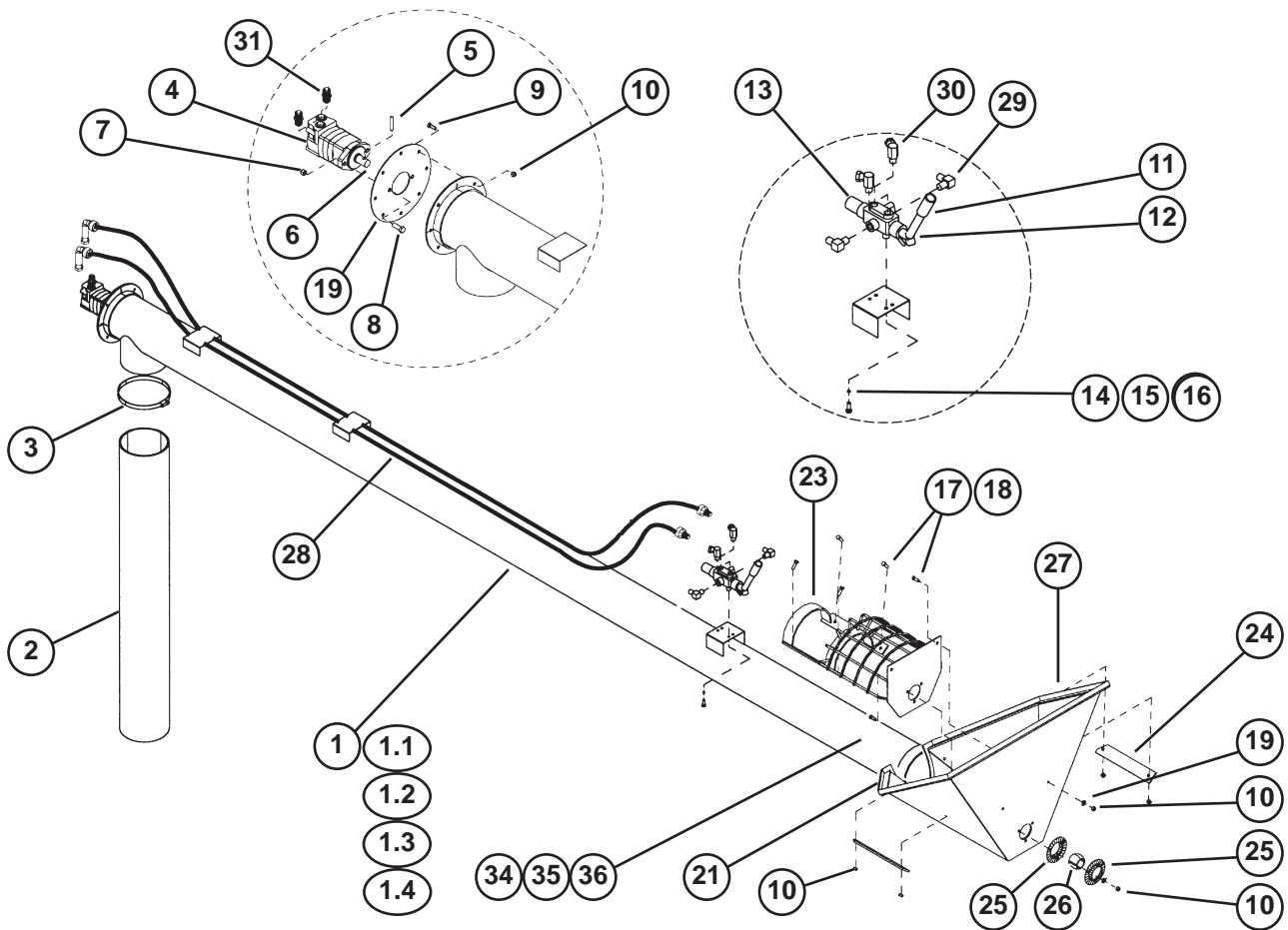
ASSY-LADDER AIR SYSTEM

Ref.	Part No.	Description	Qty.
1	65607	WLDMT-UPPER LADDER	1
2	65617	WLDMT-LOWER LADDER	1
3	65623	WLDMT-LADDER RAIL RH	1
4	66377	WLDMT-LADDER RAIL LH	1
5	62412	BOLT-HEX: .75 X 1.75 NC GR5 ZP	2
6	1017000	NUT-TOPLOCK: .75 NC GR5 ZP	2
7	59390	BOLT-HEX: .38 X 2.25 NC GR5 ZP	8
8	1016999	NUT-TOPLOCK: .38 NC GR5 ZP	8
9	67100	MOUNTING BRACKET RH	1
	67099	MOUNTING BRACKET LH (NOT SHOWN)	1
10	1027461	NUT-TOPLOCK: .50 NC GR5 ZP	4
11	1011606	BOLT-HEX: .50 X 1.25 NC GR5 ZP	4
12	1014443	WASHER-FLAT: .50 ZP	4



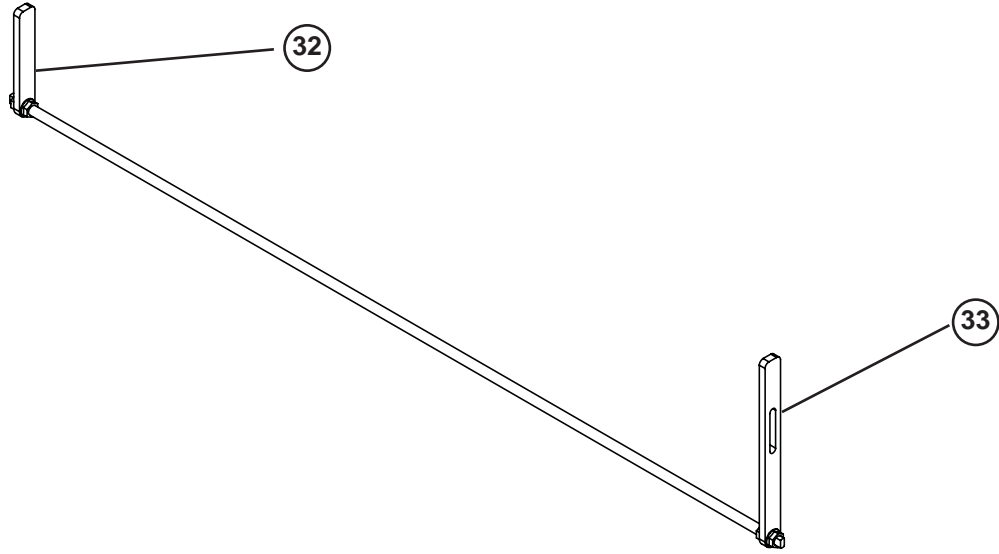
ASSY-AUGER MOUNTING COMPONENTS (8"/10")

Ref.	Part No.	Description	Qty.
1	65462	WLDMT-LONG AUGER MOUNT PAINTED	1
2	1011623	BOLT-HEX: .63 X 2.00 NC GR5 ZP	2
3	1013024	WASHER-FLAT: .63 ZP	4
4	1011578	NUT-HEX: .63 NC GR2 ZP	2
5	1011607	BOLT-HEX: .50 X 1.50 NC GR5 ZP	4
6	65313	NUT-NYLOCK: .50 NC GR2 ZP	10
7	65479	WLDMT-PIN	1
8	60965	PIN-ROLL: .19 X 1.50 ZP	1
9	50714	1023147 CLAMP 1/2" ZP	10
10	1011586	WASHER-LOCK: .38 ZP	3
11	1011600	BOLT-HEX: .38 X 1.00 NC GR5 ZP	3
12	65486	AUGER BRACKET-PAINTED	1
13	1014443	WASHER-FLAT: .50 ZP	10
14	65488	WLDMT-HANDLE	1
15	65468	WLDMT-ARM SHORT PAINTED	1
16	1011726	PIN-ROLL: .25 X 2.00 NP	2
17	65487	PIN-LOCK	1
18	1016115	PIN-HAIR: .19 X 3.25 ZP	1
19	65475	WLDMT-PIVOT TUBE	1
19.1	64505	GRIP-HANDLE RED 1" ID X 5.06" L	1
20	65721	BOLT-HEX: 1.00 X 7.00 NC GR5 ZP	1
21	65684	NUT-NYLOCK: 1.00 NC GR2 ZP	1
22	1011609	BOLT-HEX: .50 X 2.00 NC GR5 ZP	6
23	65909	CLAMP-TOP BRACKET: 8"	1
	66253	CLAMP-TOP BRACKET: 10"	1
24	65910	CLAMP-BOTTOM BRACKET: 8"	1
	66254	CLAMP-BOTTOM BRACKET: 10"	1
25	65911	ASSY-CLAMP: 8"	1
	66255	ASSY-CLAMP: 10"	1



ASSY-AUGER & HYDRAULICS (8"/10")

Ref.	Part No.	Description	Qty.
1	65719	ASSY-AUGER 8.00" X 18'	1
	66101	ASSY-AUGER 10"	1
1.1	65903	POLY FLIGHTING: 7.00" X 18'	1
	66104	POLY FLIGHTING: 9.00" X 21'	1
1.2	65906	TUBE-AUGER: 8.00" X 18'	1
	66103	TUBE-AUGER: 10.00" X 21'	1
1.3	66259	POLY FLIGHTING: 7.00" X 6" LG - REPLACEMENT SECTION	REF
	66260	POLY FLIGHTING: 9.00" X 6" LG - REPLACEMENT SECTION	REF
1.4	66418	FLIGHTING-STEEL: 7.00' X 18'	1
	33582	FLIGHTING-STEEL: 9.00' X 21'	1
2	65714	HOSE-FLEX SPOUT 8" X 48"	1
	66102	HOSE-FLEX SPOUT 10"	1
3	66220	CLAMP-HOSE #152 (8")	1
	66256	CLAMP-HOSE #188 (10")	1
4	1032092	MOTOR-HYDRAULIC PAINTED	1
5	66079	BOLT-HEX: SS .375 X 2.75 NC	1
6	1033268	NUT-NYLOCK: .38 NC GR2 SS	1
7	65313	NUT-NYLOCK: .50 NC GR2 ZP	2
8	1011607	BOLT-HEX: .50 X 1.50 NC GR5 ZP	2
9	1011600	BOLT-HEX: .38 X 1.00 NC GR5 ZP	8
10	1013338	NUT-NYLOCK: .38 NC GR2 ZP	19
11	66107	HANDLE-AUGER VALVE ZP	1

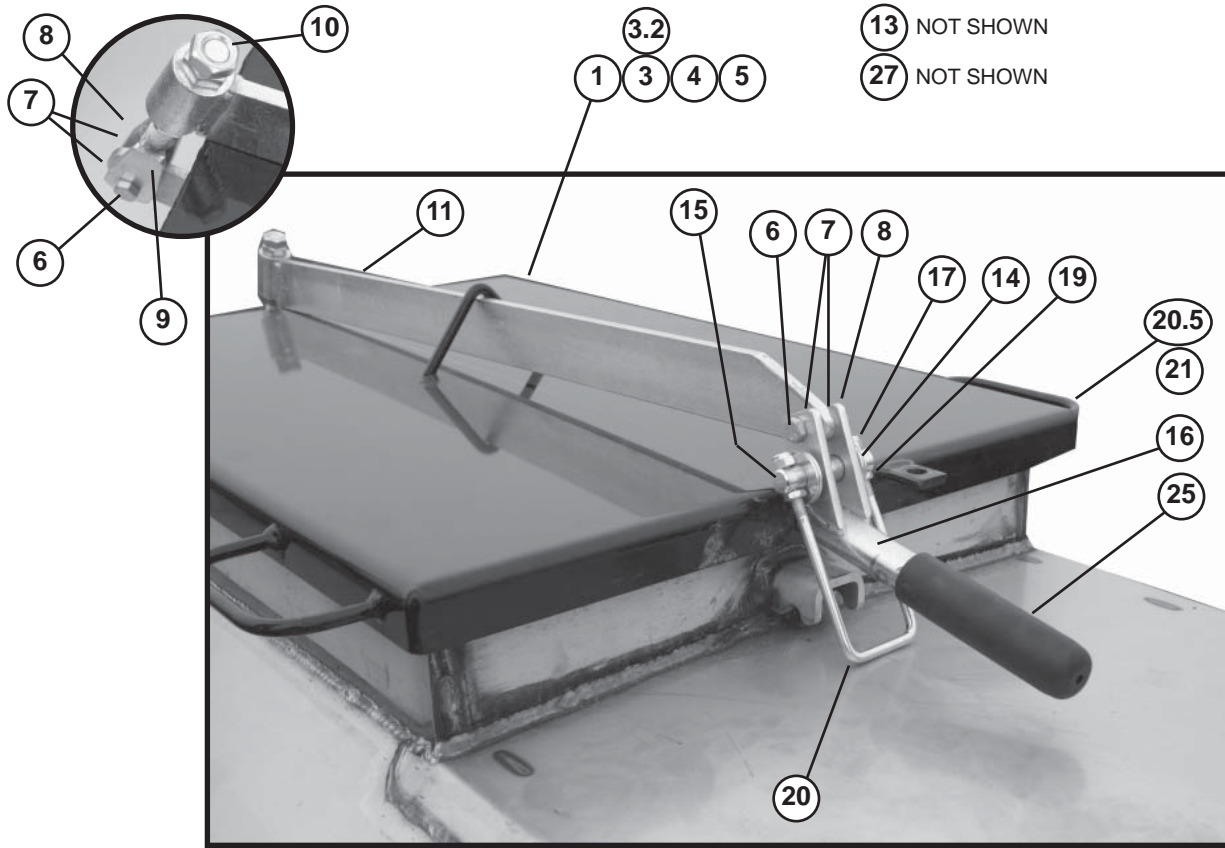


ASSY-AUGER & HYDRAULICS (8"/10") (continued)

Ref.	Part No.	Description	Qty.
12	58747	NUT-HEX: .31 NF GR5 ZP	2
13	65845	VALVE-CONTROL 4 WAY PAINTED	1
14	1019550	BOLT-HEX: .25 X 1.50 NC GR5 ZP	3
15	1013242	WASHER-LOCK: .25 ZP	3
16	1011587	NUT-HEX: .25 NC GR2 ZP	3
17	1011586	WASHER-LOCK: .38 ZP	4
18	1011601	BOLT-HEX: .38 X 1.25 NC GR5 ZP	4
19	1011828	WASHER-FLAT: .38 ZP	4
20	65723	HOSE KIT: AIR SYSTEM - REFERENCE	1
21	65907	HOPPER-POLY: 8"	1
	66277	HOPPER-POLY: 10"	1
22	65908	PLATE-MOTOR MOUNT: 8"	1
	66257	PLATE-MOTOR MOUNT: 10"	1
23	65912	MOUNT-HOPPER: 8"	1
	66258	MOUNT-HOPPER: 10"	1
24	65913	PLATE-BACKING	2
25	65914	BEARING-FLANGE	2
26	65915	BEARING-WOOD: 1.25	1
	33650	BEARING-WOOD: 1.50	1
27	65916	MESH-HOPPER: 8" (NOT SHOWN)	1
	66337	MESH-HOPPER: 10" (NOT SHOWN)	1
28	65896	HOSE-.50 X 156" 8FJX-8FJX-90	2
29	64060	FTG-ELBOW: 12MB-12MJ-90	2
30	65901	FTG-ELBOW: 10MB-8MJ-90	2
31	58195	FTG-ADAPT: 10MB-8MJ	2
32	66443	TOP HANDLE	1
33	66442	BOTTOM HANDLE	1

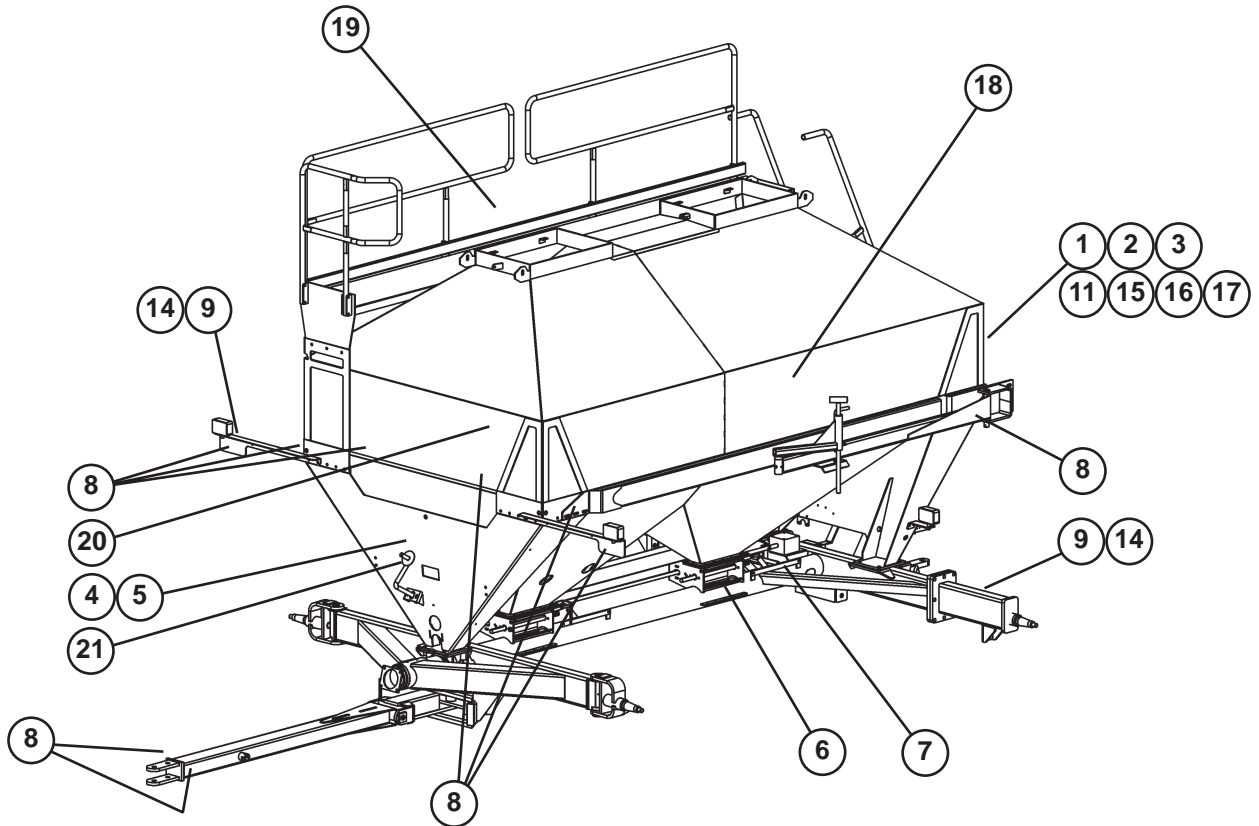
DECALS - REFERENCE PAGE 51

34	65644	DECAL-DANGER	REF
35	65646	DECAL-WARNING	REF
36	65647	DECAL-DANGER	REF



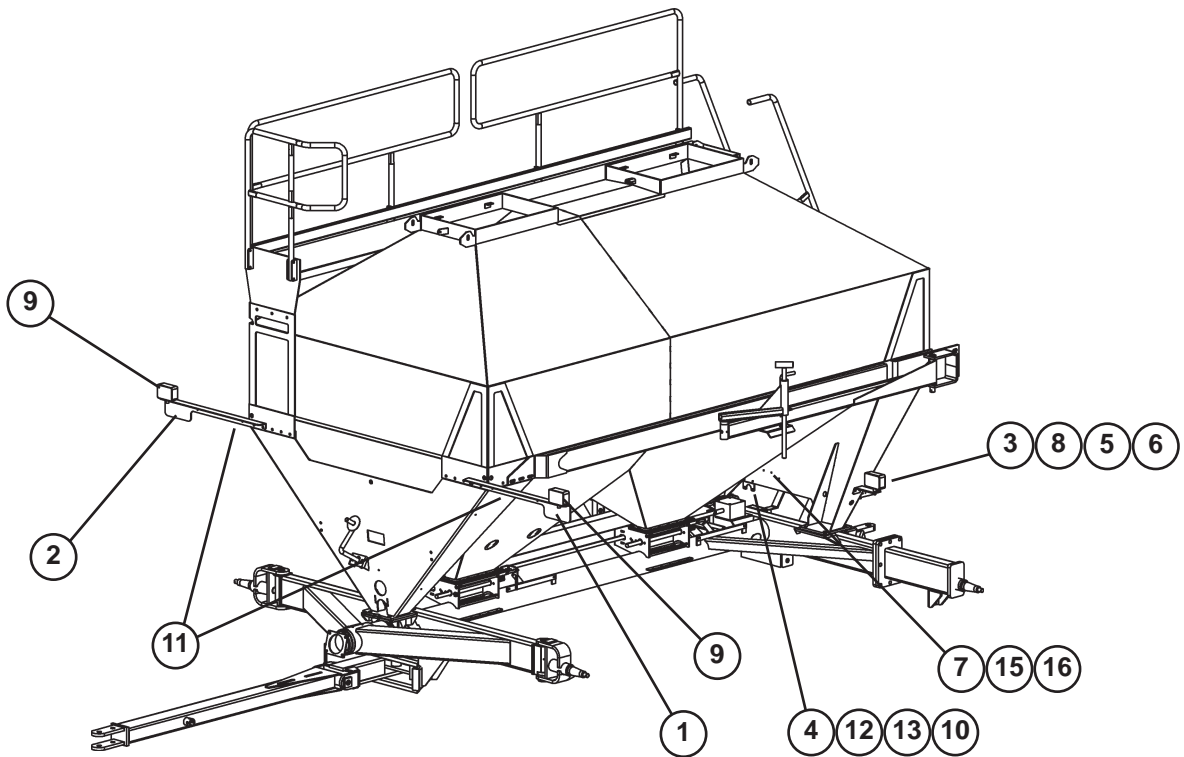
ASSY-DOORS

Ref.	Part No.	Description	Qty.
1	1017708	BOLT-HEX: .50 X 2.25 NC GR5 ZP	4
3	65555	TUBE-SPACER	4
3.2	65554	TUBE-SPACER 1.25 X .75 X .313L ZP	4
4	1011584	WASHER-FLAT: SAE .50 ZP	8
5	1011500	NUT-CENTERLOCK: .50 NC GR2 ZP	4
6	1011602	BOLT-HEX: .38 X 1.50 NC GR5 ZP	4
7	1013043	WASHER-FLAT: SAE .38 ZP	16
8	1011499	NUT-CENTERLOCK: .38 NC GR2 ZP	4
9	65556	ROD-ADJUSTMENT	2
10	1026259	NUT-JAM: .63 NC GR2 ZP	4
11	65557	WLDMT-CLAMP ADJ. TUBE	2
13	66078	PLUG-PIPE .25 NPT ALLEN HEAD SS (NOT SHOWN)	2
14	1013004	WASHER-FLAT: SAE .63 ZP	8
15	65560	PIN-CLAMP LEVER	2
16	65559	WLDMT-CLAMP LEVER 2	2
17	1024385	NUT-NYLOCK: .31 NC GR2 ZP	4
19	1020506	NUT-JAM: .31 NC GR2 ZP	4
20	65656	U-BOLT .313 X 5 X 2 X 5	2
20.5	65558	WLDMT-TOP DOOR	2
21	65722	GASKET-DOOR (NOT SHOWN)	2
25	65902	GRIP-BLACK 1" ID X 5.06" L	2
26	64504	SEALANT-PROGLAZE (NOT SHOWN)	100
27	1026562	SCREEN BASKET (OPTIONAL - NOT SHOWN)	2



ASSY-DECALS AIR SYSTEM 2800 (3350)

Ref.	Part No.	Description	Qty.
1	65329	SIGN-SMV ASAE S276.5	1
2	1011595	BOLT-HEX: .25 X .75 NC GR5 ZP	2
3	1030946	NUT-TOPLOCK: .25 NC GR5 ZP	2
4	65641	DECAL-WARNING AVOID INJURY	1
5	65642	DECAL-DIRECTIONAL	1
6	65643	DECAL-WARNING DO NOT OPEN	2
7	65561	DECAL-INCH	2
8	65331	DECAL-YELLOW RETROREFLECTIVE	10
9	65330	DECAL-RED RETROREFLECTIVE	4
10	65644	DECAL-DANGER (SEE PAGE 52 - ASSY, AUGER & HYDRAULICS)	1
11	65645	DECAL-WARNING	1
12	65646	DECAL-WARNING (SEE PAGE 52 - ASSY, AUGER & HYDRAULICS)	1
13	65647	DECAL-DANGER (SEE PAGE 52 - ASSY, AUGER & HYDRAULICS)	1
14	65332	DECAL-RED ORANGE FLUORESCENT	4
15	65834	MOUNT-SMV SIGN	1
16	1011600	BOLT-HEX: .38 X 1.00 NC GR5 ZP	1
17	1013338	NUT-NYLOCK: .38 NC GR2 ZP	1
18	66515 (66517)	DECAL-FARGO AIRE 2800 (3350) LH	1
19	66516 (66518)	DECAL-FARGO AIRE 2800 (3350) RH	1
20	66080	DECAL-CRANK WHITE	1
21	66514	DECAL-FARGO AIRE	1



ASSY-SAFETY LIGHT

Ref.	Part No.	Description	Qty.
1	65831	BRACKET-LIGHT LH	1
2	65832	BRACKET-LIGHT RH	1
3	66011	BRACKET-LIGHT	2
4	65833	BRACKET-CONNECTOR 7 PIN	1
5	1033271	BOLT-HEX: .38 X 1.00 NC GR5 SS	4
6	1033268	NUT-NYLOCK: .38 NC GR2 SS	4
7	65341	MODULE-INTERFACE	1
8	65333	LAMP-RED TAIL	2
9	65334	LAMP-AMBER FLASHING	2
10	65340	HARNESS-SAFETY LIGHT S279.11	1
11	65354	HARNESS-LIGHT EXTENSION	2
12	1011598	BOLT-HEX: .31 X 1.00 NC GR5 ZP	4
13	1018693	NUT-NYLOCK: .31 NC GR2 ZP	4
14	1013122	TIE-CABLE, NYLON 14.00"	20
15	65839	SCREW-PAN HEAD: #10-24 NC X .75 LG	4
16	65348	NUT-HEX: #10-24 NC	4

