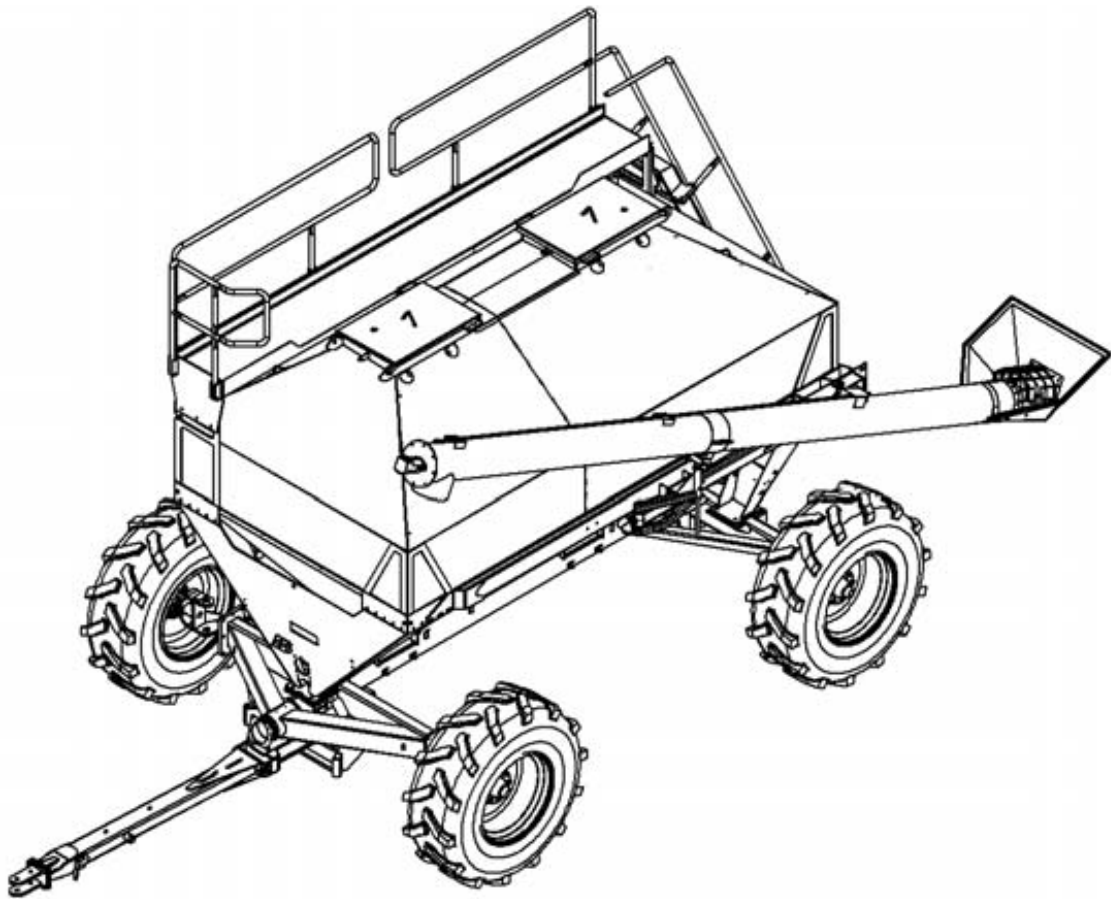




PARTS MANUAL



2800 & 3350 AIR CART

AGCO-Amity JV LLC LIMITED WARRANTY TERMS AND CONDITIONS – UNITED STATES AND CANADA

EFFECTIVE FOR EQUIPMENT RETAILED AND DELIVERED AFTER JANUARY 1, 2020

WHAT IS WARRANTED AGCO Amity JV warrants its new equipment to be free of defects in material and workmanship at time of delivery to the first retail purchaser, renter, or lessee. These terms apply to all 10K, Amity, Concord, Wil-Rich and Wishek brands of new equipment originally marketed in the United States and Canada.

WARRANTY PERIOD

- 12 Months from the date of delivery to the first retail purchaser, renter or lessee.
- 483 Disk Chisel, Field Cultivator and Disk Cultivators: 3 years on main frames, wing frames, and shank assemblies
- Precision Shank Drill: 3 years on main frame, wing frame, and rockshafts.

EXCEPTIONS FROM THIS WARRANTY

- **Freight Charges** - This warranty does not cover freight charges.
- **Improvements, Changes, or Discontinuance** AGCO Amity JV reserves the right to make changes and improvements in design or changes in specifications at any time to any product without incurring any obligations to owners of products previously sold.
- **Repairs and Maintenance Not Covered Under Warranty** - This warranty does not cover conditions resulting from misuse, natural calamities, use of non-AGCO-Amity JV parts, negligence, alteration, accident, use of unapproved attachments, usage which is contrary to the intended purposes, or conditions caused by failure to perform required maintenance. Replacement of Wear or Maintenance items (unless defective) such as but not limited to, filters, hoses, belts, lubricants, light bulbs, wheel alignment, tightening of nuts, belts, bolts, and fittings, service tune-up, computer parameter adjustments and general adjustments which may from time to time be required are not covered.
- **Rubber Tire Warranty** - Rubber tires are warranted directly by the respective manufacturer only and not by AGCO Amity JV.
- **Satellite Outages** - Interruptions in satellite interfaces and satellite communications are outside the control of this product and are not covered by this warranty. The company is not responsible for issues or degradation of system performance resulting from such interruptions in satellite interfaces and satellite communications where the issues are not related to defects in this product.

OWNER'S OBLIGATION

It is the responsibility of the Owner to transport the equipment or parts to the service shop of an authorized AGCO Amity JV Dealer or alternatively to reimburse the Dealer for any travel or transportation expense involved in fulfilling this warranty. This Warranty does NOT cover rental of replacement equipment during the repair period, damage to products which have been declared a total loss and subsequently salvaged, overtime labor charges, freight charges for replacement parts, or special handling requirements (such as, but not limited to, the use of cranes).

EXCLUSIVE EFFECT OF WARRANTY AND LIMITATION OF LIABILITY

THIS WARRANTY IS IN LIEU OF ALL WARRANTIES OF MERCHANTABILITY, FITNESS FOR A PURPOSE OR OTHER REPRESENTATIONS, WARRANTIES OR CONDITIONS, EXPRESSED OR IMPLIED. The remedies of the Owner set forth herein are exclusive. The Company neither assumes nor authorizes any person to assume for it any other obligation or liability in connection with the sale of covered machines. Correction of defects, in the manner and for applicable period of time provided above, shall constitute fulfillment of all responsibilities of AGCO Amity JV to the Owner, and AGCO Amity JV shall not be liable for negligence under contract or in any manner with respect to such machines. IN NO EVENT SHALL THE OWNER BE ENTITLED TO RECOVER FOR INCIDENTAL, SPECIAL OR CONSEQUENTIAL DAMAGES SUCH AS BUT NOT LIMITED TO, LOSS OF CROPS, LOSS OF PROFITS OR REVENUE, OTHER COMMERCIAL LOSSES, INCONVENIENCE OR COST OF RENTAL OR REPLACEMENT EQUIPMENT.

Some States or Provinces do not permit limitations or exclusions of implied warranties or incidental or consequential damages, so the limitations or exclusions in this warranty may not apply.

"AGCO Amity JV" AS REFERRED TO HEREIN WITH RESPECT TO SALES IN: UNITED STATES and CANADA: AGCO Amity JV LLC
PO Box 1030
Wahpeton, ND 58074

Additional Warranty Information

New Equipment Warranty - Equipment is eligible for warranty service only if it qualifies under the provisions of the New Equipment Warranty. The selling dealer will deliver this Warranty to the original retail purchaser at the time of sale, and the dealer will register the sale and Warranty with AGCO Amity JV LLC.

Subsequent Owners - This Warranty covers the first retail purchaser and all subsequent owners of the equipment during the specified warranty period. Should the AGCO Amity JV Dealer sell this equipment to a subsequent owner, the Dealer must deliver the warranty document to the subsequent owner so the subsequent owner can register ownership with AGCO Amity JV and obtain the remaining warranty benefits, if available, with no intermission in the Warranty Period. Subsequent Owner Procedure will apply. It is the responsibility of the subsequent owner to transport the equipment to the service shop of an authorized AGCO Amity JV Dealer or alternatively to reimburse the Dealer for any travel or transportation expense involved in fulfilling this warranty. This Warranty does NOT cover charges for rental or replacement equipment during the repair period, products which have been declared a total loss and subsequently salvaged, overtime labor charges, freight charges for replacement parts, or units sold at auction.

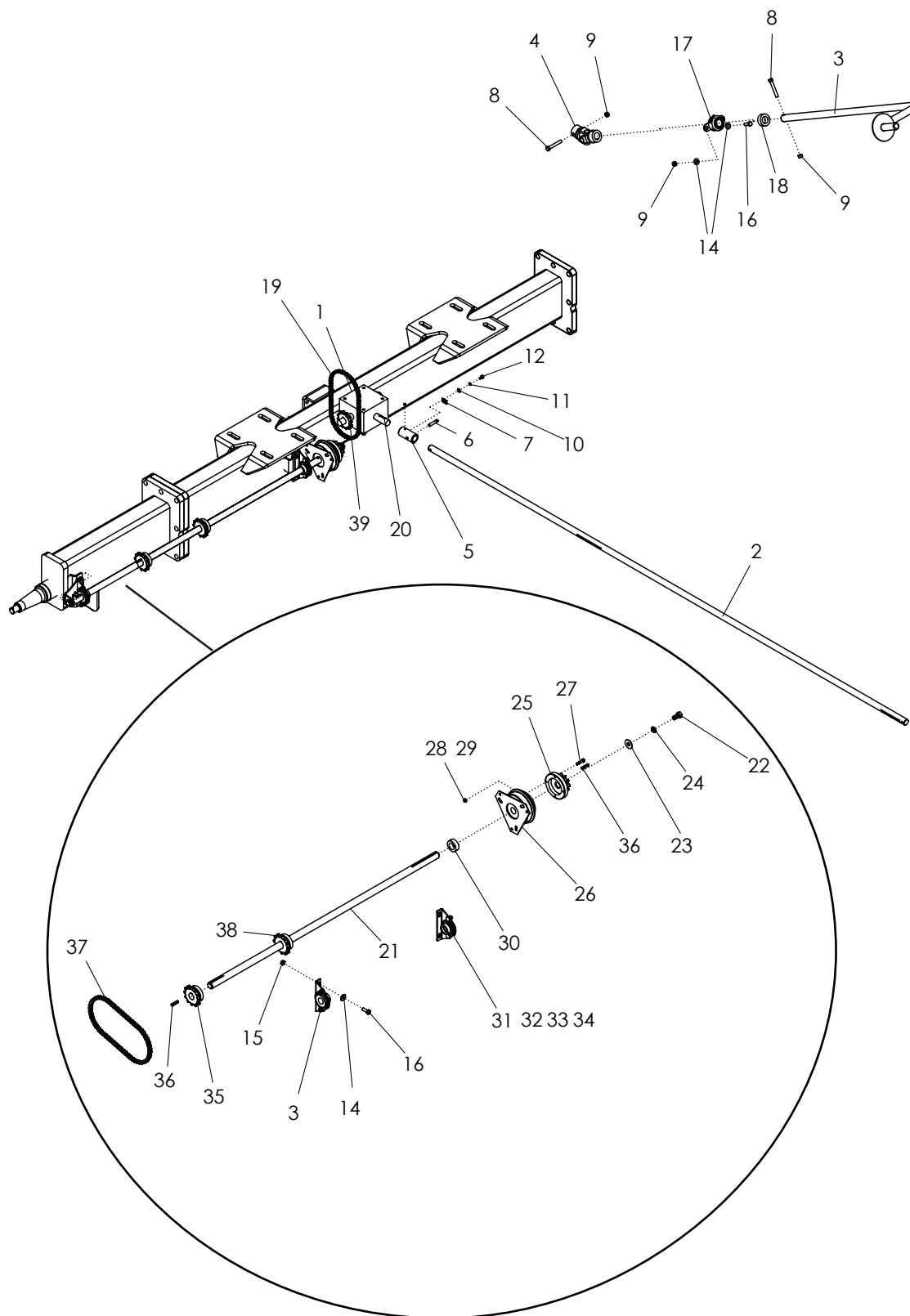
Warranty Service - To be covered by Warranty, service must be performed by an authorized AGCO Amity JV Dealer. It is recommended that you obtain warranty service from the Dealer who sold you the equipment because of that Dealer's continued interest in you as a valued customer. In the event this is not possible, warranty service may be performed by any other authorized AGCO Amity JV Dealers in the United States or Canada. It is the responsibility of the Owner to transport the equipment to the service shop of an authorized AGCO Amity JV Dealer or alternatively to reimburse the Dealer for any travel or transportation expense involved in fulfilling this warranty.

Maintenance Service - The Owner's Manual furnished to you with the equipment at the time of delivery contains important maintenance and service information. You must read the manual carefully and follow all the maintenance and service recommendations. Doing so will result in greater satisfaction with your equipment and help avoid service and warranty problems. Please remember that failures due to improper maintenance of your equipment are not covered by warranty.

Maintenance Inspections - To insure the continued best performance from your agricultural equipment, we recommend that you arrange to make your equipment available to your selling Dealer for a maintenance inspection 30 days prior to warranty expiration.

2800 & 3350 Air Cart

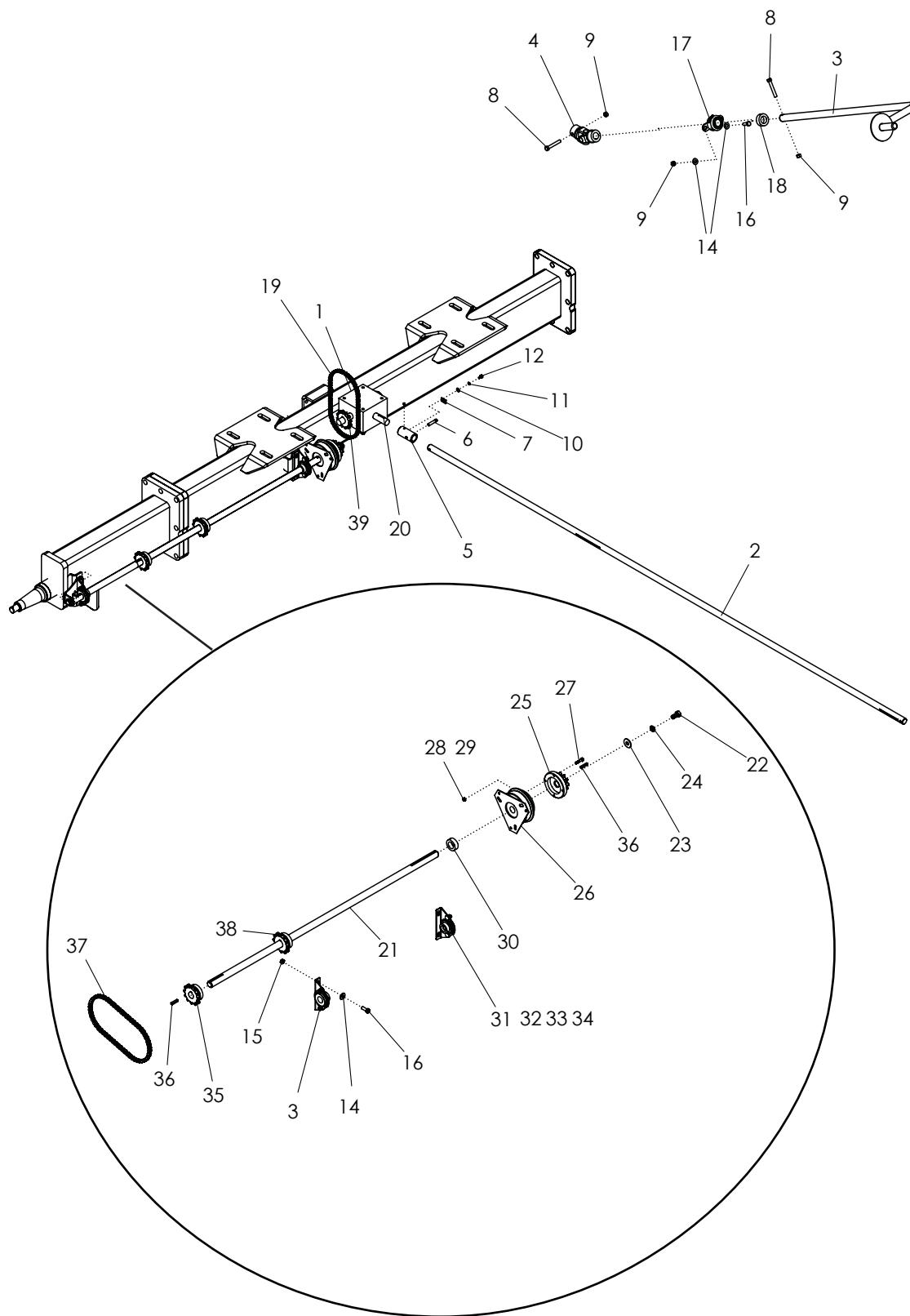
1. Drive System	
Assy-Meter Driveline	6
Assy-Meter Box	10
Assy-Meter Box Door	12
Assy-Ground Drive	14
2. Hydraulic System	
Blower Assembly	16
Assy-Blower Hydraulic Ground Drive	18
Assy-Blower Hydraulic Ground Drive	20
3. Electrical System	
Assy-ECU Mount	22
Assy-Safety Light.....	24
Assy-Hydraulic Drive	26
2800/3350 Air Cart Harness	28
4. Product Containment	
Assy-Tank/Running Gear	30
5. Airstream Assembly – Single	
Assy – Airstream Single	34
6. Application System	
Assy-Pressurization Kit	36
24 Row White Planter Manifold	38
Planter Manifold Cable Assembly	40
Drawpole Extension	42
Drawpole Extension Mounting	44
7. Spindles and Wheels	
Assy – Axles Front	46
Assy – Draw Pole & Steering Linkage	48
Assy - Axles Rear 150”	50
Assy – Tie Rod	52
Assy – Hub	53
Wheel Assembly.....	54
8. Attachments	
Assy – Catwalk & Handrails	56
Assy – Ladder Air System	58
Assy – Auger & Hydraulics	60
Assy – Auger Mounting Components	62
Assy – Doors.....	64
9. Decals	
Safety Decals.....	66
Branding Decals	68



701461-A

ASSY-METER DRIVELINE

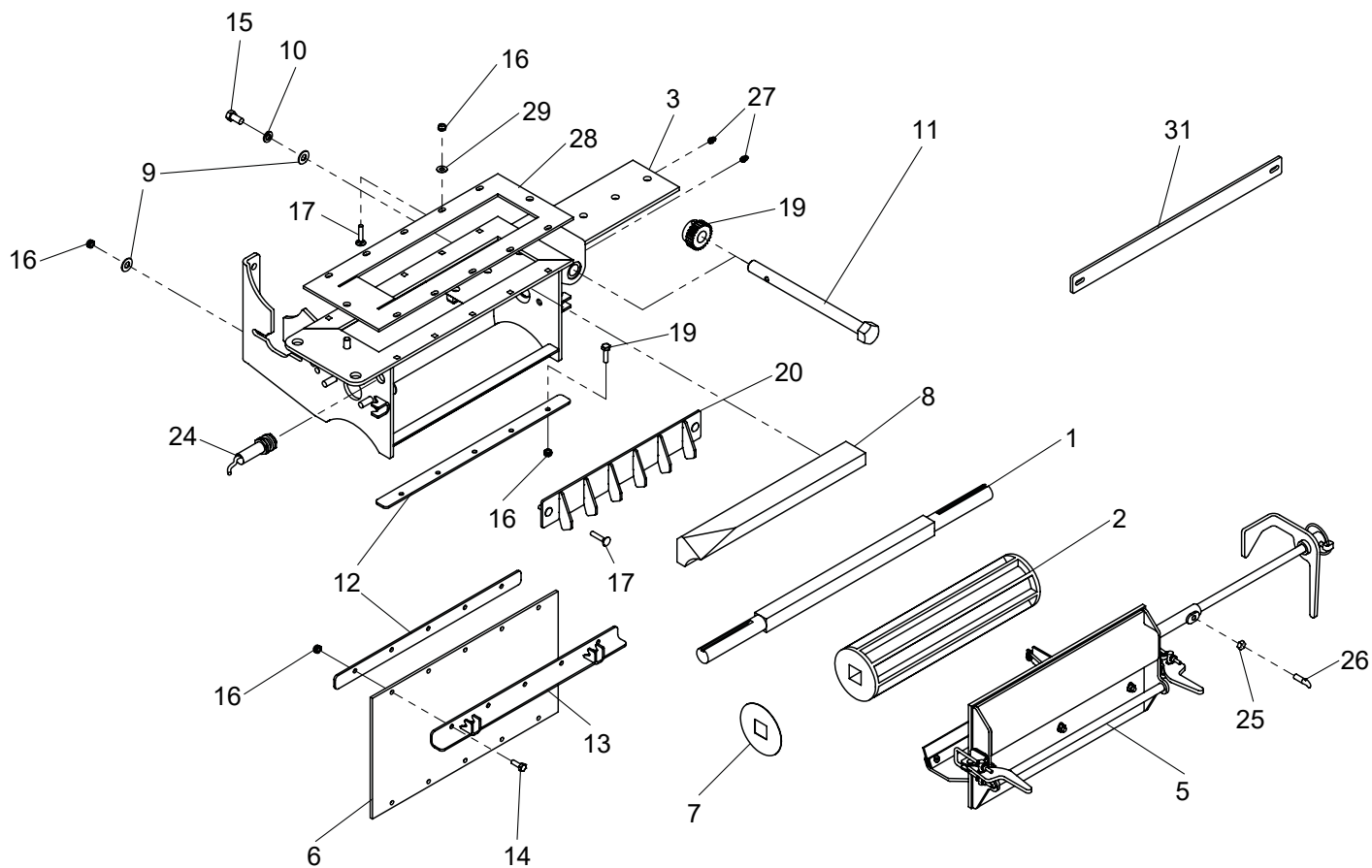
ITEM	PART NO.	DESCRIPTION
1	PA65649	GEARBOX-PRAIRIE (1:1) (BLACK)
	P330132	SEAL-GEARBOX (65649)
2	PA65567	SHAFT-METER DRIVE
3	PA65688	WLDMT-METER CRANK
	PA66080	DECAL-CRANK WHITE
4	PA65826	U-JOINT-DRILLED
5	PA65552	COUPLER
6	PA10132189	PIN-SHEAR: BRASS
7	PA1013221	STRIP-SHEAR PIN ZP
8	PA65693	BOLT-HEX: SS .38 X 2.50 NC
9	PA1033268	NUT-NYLOCK: .38 NC GR2 SS
10	PA65695	WASHER-FLAT: 1/4 18-8SS
11	PA65696	WASHER-LOCK: 1/4 18-8SS
12	PA65692	BOLT-HEX: 1/4-20NC X 1/2 18-8SS
13	PA1013044	SCREW-SET: .25 X .25 NC GR8 NP
14	PA1033262	WASHER-FLAT: 3/8 18-8SS
15	P88659	NUT-TOPLOCK: 3/8-16NC 5ZP
16	P89451	BOLT-HEX: 3/8-16NC X 1 SS
17	PA1030961	BEARING FLANGE ASSY MODIFIED
18	PA65694	COLLAR-SET: 1.00 SS
19	PA65699	CHAIN-ROLLER 60-1R-031
	PA65701	LINK-CONNECTOR #60
	PA65724	LINK-OFFSET #60
20	PA65715	KEY SQ .250 X 1.250 SS
21	PA65945	SHAFT-CLUTCH DRIVE 120 ZP
	PA65654	SHAFT-CLUTCH DRIVE 150 ZP
22	P89015	BOLT-HEX: 1/2-13NC X 1 5ZP
23	P88347	WASHER-FLAT: 1/2 (9/16 X 1-3/8ACT) 2ZP
24	P88303	WASHER-LOCK: HELICAL 1/2ID (9/16ACT) ZP
25	PA65553	WLDMT-CLUTCH SPROCKET 10T
26	PA1021090	CLUTCH-ELECTRIC
27	P89028	BOLT-HEX: 1/4-20NC X 1-1/4 5ZP
28	P89501	NUT-TOPLOCK: 1/4-20NC 5ZP
29	P88262	WASHER-LOCK: 1/4ID (5/16ACT) ZP
30	PA66181	BUSHING-ADAPTER
31	PA1018571	ASSY-BEARING PILLOW BLOCK
32	P89000	BOLT-CARRIAGE: 5/16-18NC X 3/4 SHTNK 5ZP
33	P88358	WASHER-HELICAL: 5/16ID ZP
34	P88127	NUT-HEX: 5/16-18NC 5ZP
35	PA1012976	SPROCKET-60BS10 X 1.00 MARTIN



701461-A

ASSY-METER DRIVELINE

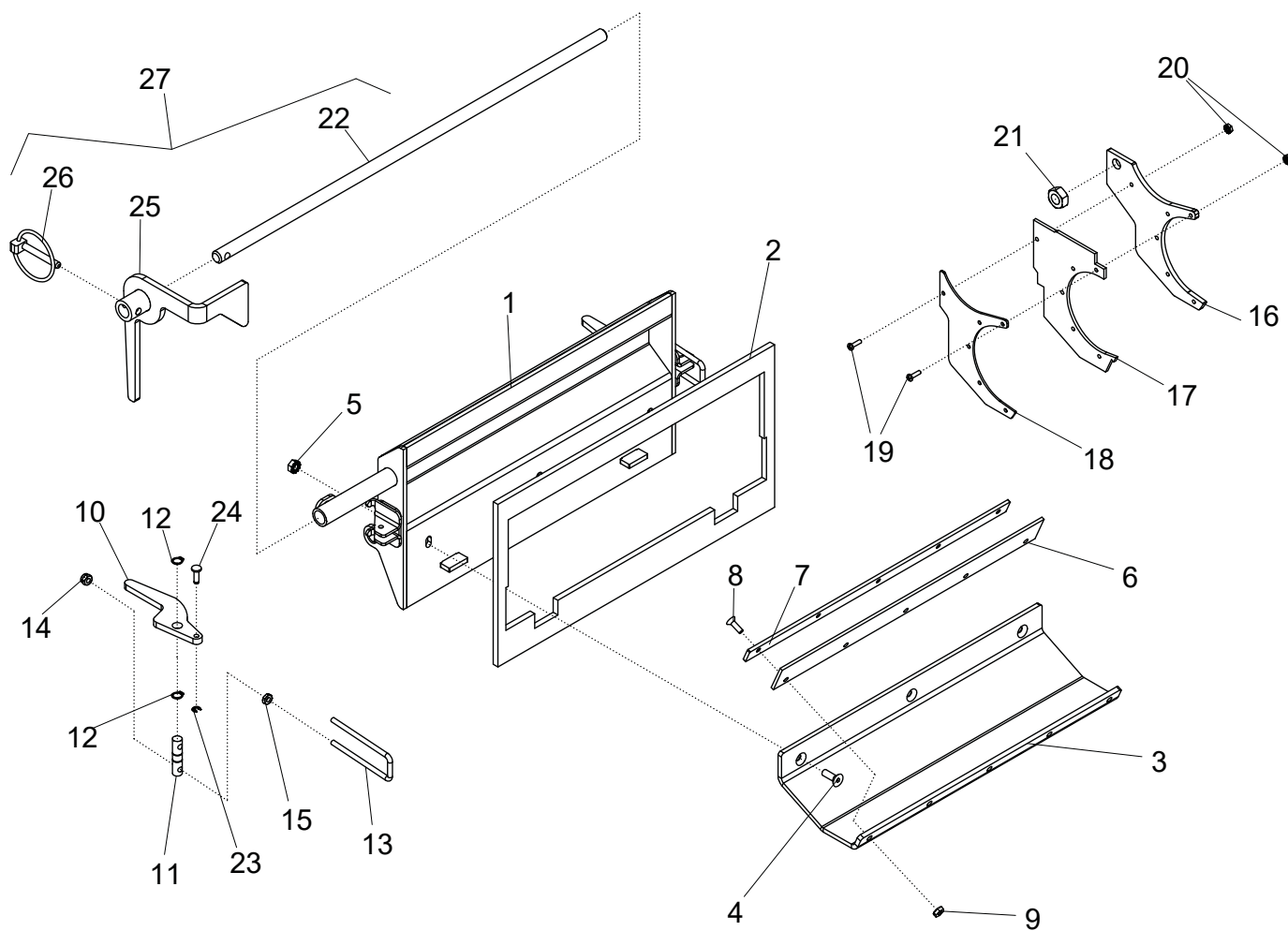
ITEM	PART NO.	DESCRIPTION
36	PA65715	KEY SQ .250 X 1.250 SS
37	PA65703	CHAIN-ROLLER 60-1R-027
	PA65701	LINK-CONNECTOR #60
	PA65724	LINK-OFFSET #60
38	PA66075	SPROCKET-60BS12 X 1.00
39	PA1012976	SPROCKET-60BS10 X 1.00 MARTIN - 23.1R26 HIGH RATE
	PA66075	SPROCKET-60BS12 X 1.00 - 18.4R26 HIGH RATE
	PA1025228	SPROCKET-60BS15 X 1.00 - 23.1R26 STANDARD RATE
	PA1021069	SPROCKET-60BS17 X 1.00 MARTIN - 18.4R26 STANDARD RATE



701463-A

ASSY- METER BOX

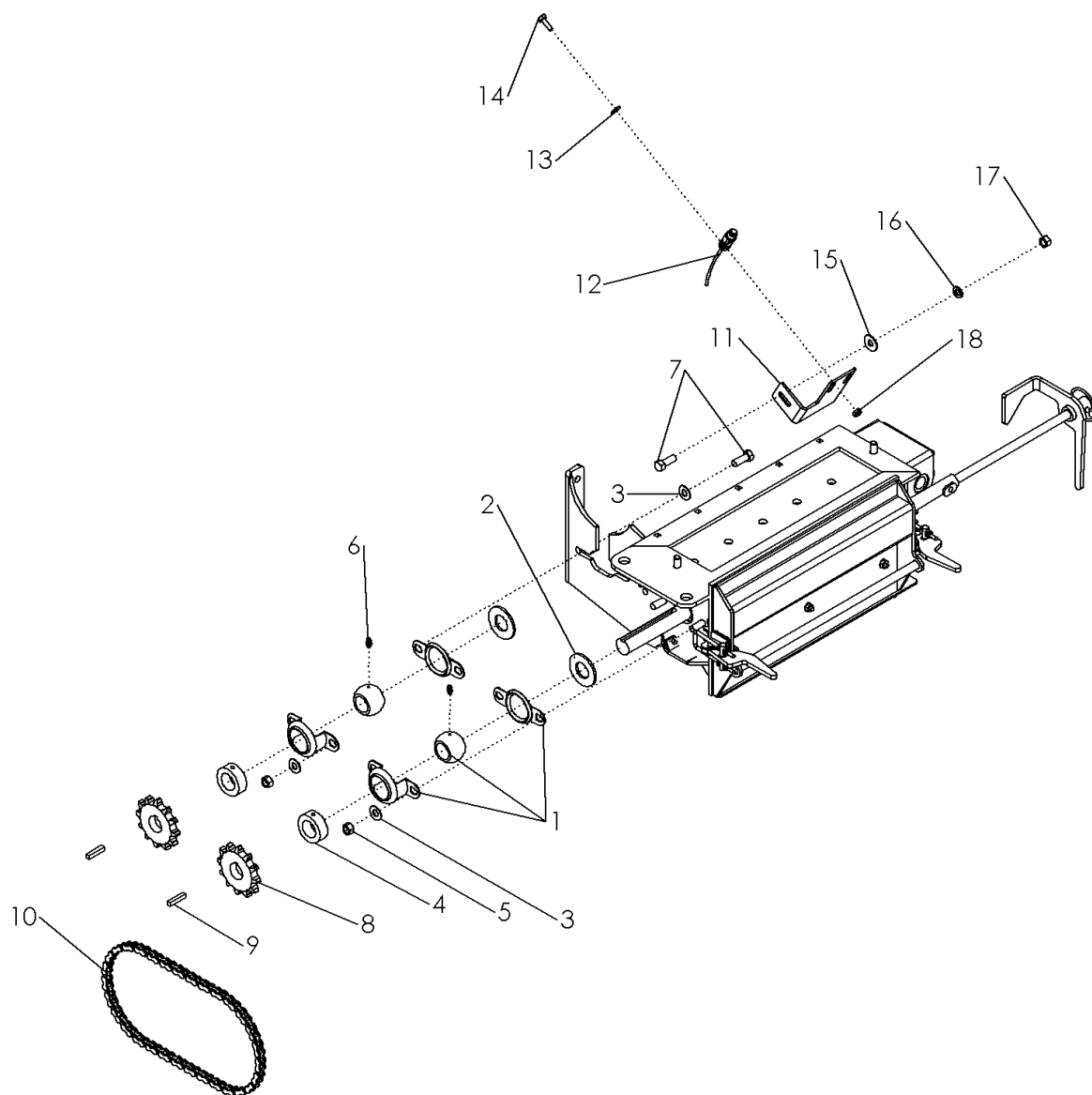
ITEM	PART NO.	DESCRIPTION
1	PA65650	SHAFT-METER ROLL
2	PA65705	WLDMT-METER ROLL - HIGH VOLUME
	P1012608	WLDMT-METER ROLL - MEDIUM VOLUME
	PA33851	WLDMT-METER ROLL - LOW VOLUME
	PA67639	WLDMT-METER ROLL - FINE PRODUCT
3	PA65632	WLDMT-TOP SLIDE IN DOOR
4	PA65707	PINION-SS 16DP-14.5PA 26T .50 FACE
5	PA66306	ASSY-METER BOX DOOR (SEE PG. 12-13)
6	PA65708	RUBBER-CLEANOUT DOOR
7	PA65744	SHIM-METER ROLL SPACER
8	PA66062	BLOCK-METER TOP
9	PA1033262	WASHER-FLAT: 3/8 18-8SS
10	P88362	WASHER-HELICAL: 3/8ID ZP
11	PA65630	BOLT-SS PIN ADJUSTMENT
12	PA65629	PLATE-CLEANOUT RETAINER
13	PA65626	WLDMT-ANGLE LATCH
14	PA1033270	BOLT-HEX: 1/4-20 X 3/4 NC 18-8SS
15	PA66375	BOLT-HEX: 3/8-16NC X 3/4 18-8SS
16	PA1033269	NUT-NYLOCK: 1/4-20NC 18-8SS
17	PA66043	BOLT-CARRIAGE: 1/4-20 X 1-1/4 18-8SS
18	P88103	NUT-HEX: 3/8-16NC 5ZP
19	PA66077	BOLT-HEX:1/4-20 X1 18-8SS
20	PA67484	WLDMT-METER BOX AIR DAM
21	PA1032044	SCALE-CALIBRATION KT (NOT SHOWN) (SEE PG. 72-73)
22	PA64503	GLUE-MASTERBRAND GASKET (NOT SHOWN)
23	PA66098	ASSY-CLEANOUT DOOR (INCLUDES ITEMS 12-14, 16,23)
24	PA66511	SENSOR-METER BOX
25	PA1023719	NUT-JAM: 5/16-18 18-8SS
26	PA663316	SCREW-THUMB SP HEAD .313-18 X .75SS
27	P88550	FITTING-GREASE: 1/4-28 3038-B ZP
28	PA65512	GASKET-SEEDBOX
29	PA65695	WASHER-FLAT:1/4 18-8SS
30	PA66097	ASSY-DEFLECTOR (NOT SHOWN)
31	PA65490	PLATE-INDICATOR DECAL



701464-A

ASSY-METER BOX DOOR

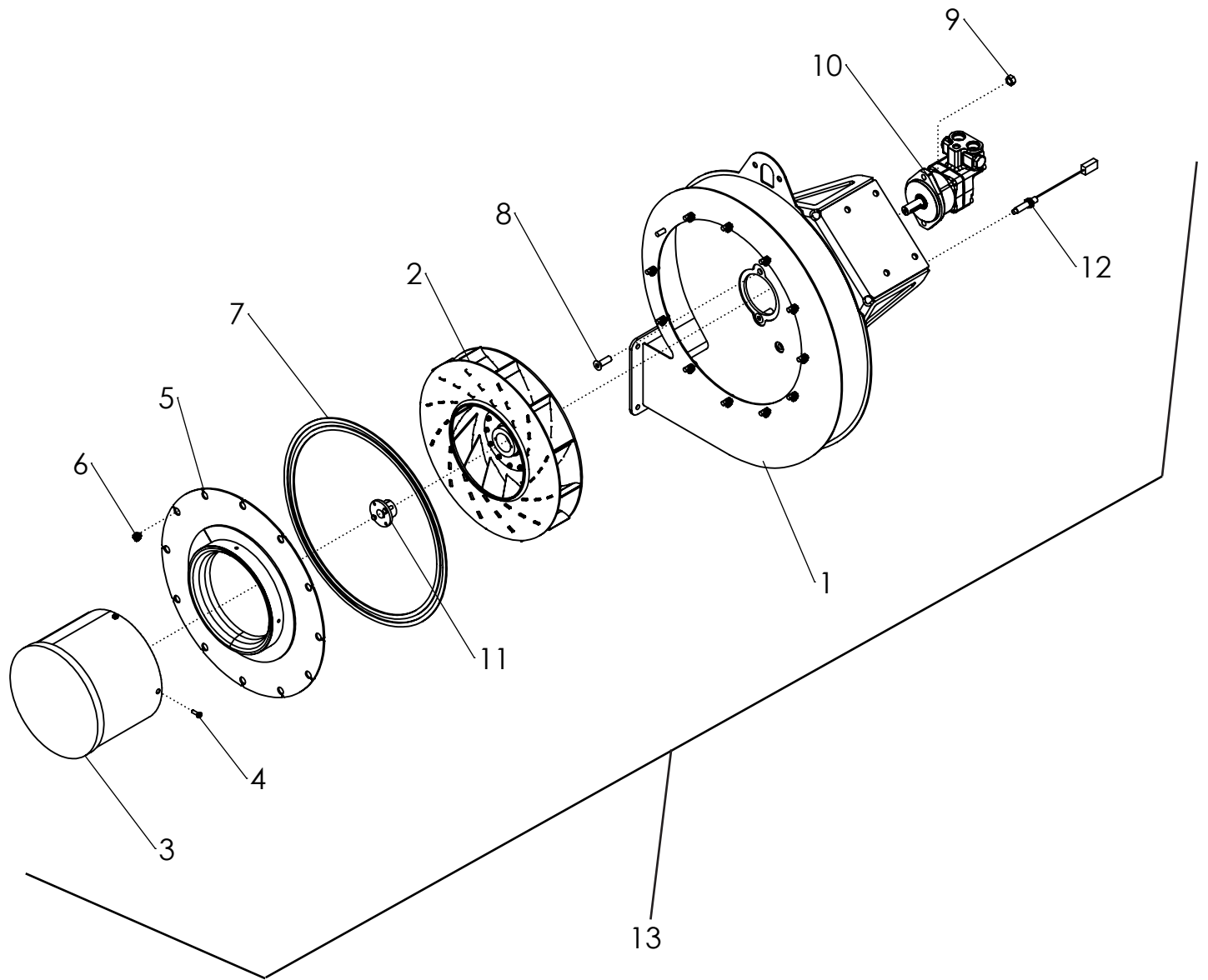
ITEM	PART NO.	DESCRIPTION
1	PA66305	WLDMT-METER BOX DOOR
2	PA66344	GASKET-RUBBER METER BOX DOOR
3	PA66300	PLATE-METER BOX SEED TRAY
4	PA66347	SCREW-FHSC: .25 X .75 NC SS
5	PA66348	NUT-K-LOCK: 1/4-20NC 18-8SS
6	PA66345	WIPER-RUBBER
7	PA66310	SHEET-METER BOX WIPER MOUNT
8	PA1032095	SCREW-FHSC: .19 X .625 NC SS
9	P1032059	NUT-K-LOCK: 3/16 (10-24)NC 18-8SS
10	PA65640	PLATE-METER CLAMP HANDLE TUMBLE
11	PA65639	SHAFT-METER LATCH
12	PA67499	RING-RETAINING .375 SS
13	PA65655	U-BOLT: SS.188 X 3.25 X .875 X 3.25
14	PA65712	NUT-NYLOCK: #10-24 18-8SS
15	PA65348	NUT-HEX: #10-24 SS
16	PA66307	PLATE-METER BOX FLOW CONTROL
17	PA66346	SEAL-RUBBER FLOW CONTROL
18	PA66309	PLATE-METER BOX FLOW CONTROL (THIN)
19	PA1032093	SCREW-PHILLPS HEAD: #6-32X 1/2 NC 18-8SS
20	PA1032094	NUT-K-LOCK: #6-32 18-8SS
21	PA1032190	NUT-JAM: 1/2-13 NC 18-8SS
22	PA65661	ROD-FLOW CONTROL
23	PA67498	E-CLIP: 3/16" SS
24	PA67497	PIN-METER LATCH SS
25	PA65662	WLDMT-INDICATOR
26	P89549	PIN-LYNCH: .250 X 1.563
27	PA65651	ASSY-FLOW CONTROL ROD



701466-A

ASSY-GROUND DRIVE

ITEM	PART NO.	DESCRIPTION
1	PA1012986	BEARING-FLANGE/A
2	PA1012978	WASHER-RUBBER
3	PA1033262	WASHER-FLAT: 3/8 18-8SS
4	PA65694	COLLAR-SET: 1.00 SS
5	P1033268	NUT-NYLOCK: 3/8NC 18-8SS
6	P88550	FITTING-GREASE: 1/4-28 3038-B ZP
7	P1033271	BOLT-HEX: SS .38 X 1.00 NC (89451)
8	PA65698	SPROCKET-SS #40 15T
9	PA65715	KEY .250 X .250 X 1.250 SS
10	PA65700	CHAIN-ROLLER 40-1R-039 SS
	PA65697	LINK-CONNECTOR SS #40
	PA65726	LINK-OFFSET #40 SS
11	PA66587	BRACKET-SHAFT SENSOR ART 240
12	PA66507	SENSOR-SPEED/SHAFT (ISO)
13	PA65695	WASHER-FLAT:1/4 18-8SS
14	1033270	BOLT-HEX: 1/4-20 X 3/4 NC 18-8SS
15	PA65778	WASHER-FLAT: 3/8 X 1 USS 18-8SS
16	PA65706	WASHER-LOCK: 3/8 18-8SS
17	PA1032089	NUT-HEX: 3/8-16 NC 18-8SS
18	P1033269	NUT-NYLOCK: 1/4-20NC 18-8SS



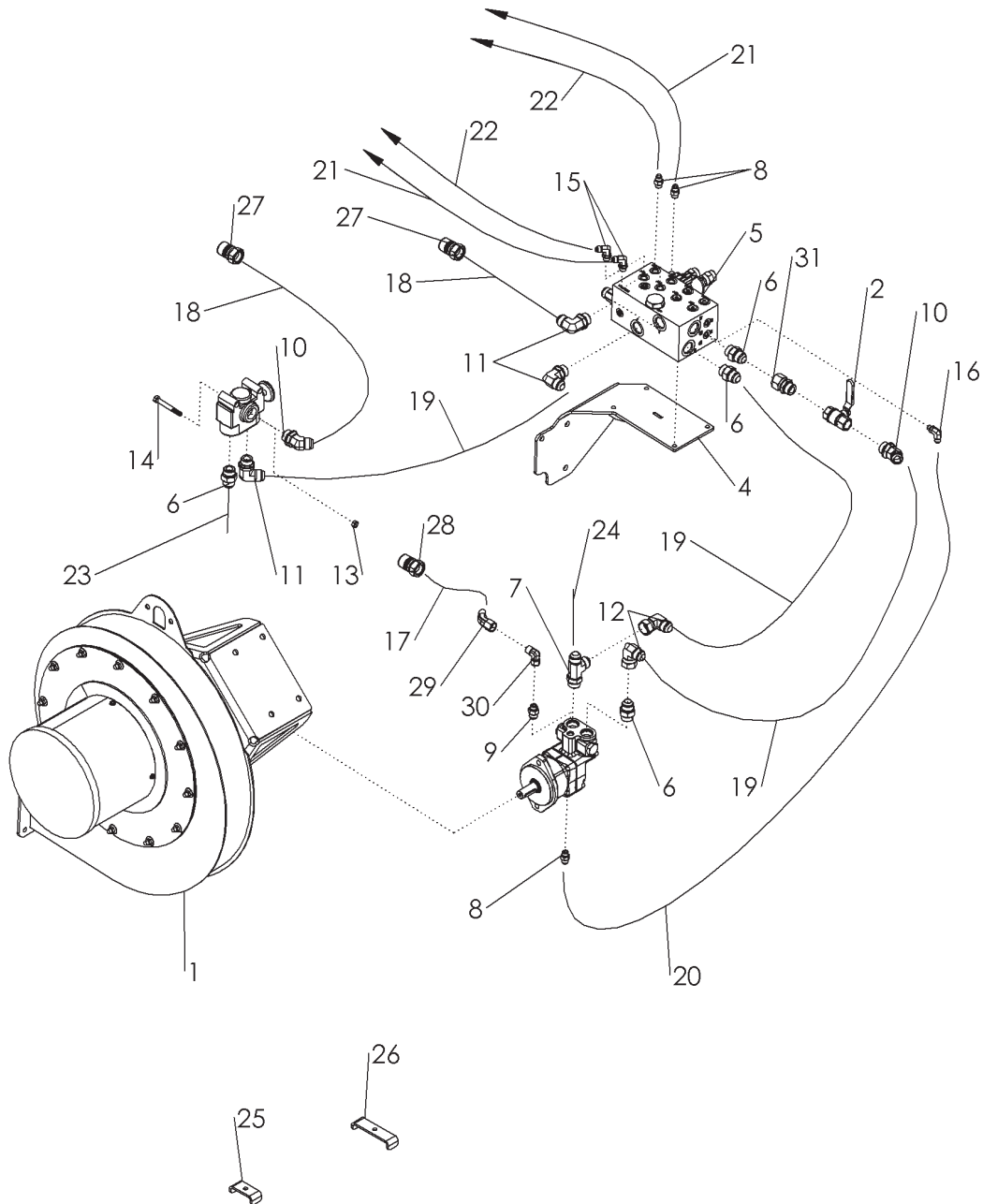
M6029-A

BLOWER ASSEMBLY

ITEM	PART NO.	DESCRIPTION
1	P330443	WLDMT-NARROW HOUSING
2	P330415	ROTOR-REM
3	P330416	SCREEN-INLET
4	P89551	BOLT-FLANGE: 1/4-20 X 1 NC 5ZP
5	P330560	WLDMT-BELL INLET
6	P330419	NUT-FLANGE: SERRATED 3/8-16NC 2ZP LG
7	P330418	NEOPRENE-1/8 X 3/8
8	P88475	BOLT-HEX: 1/2-13NC X 1-1/2 5ZP
9	P88661	NUT-TOPLOCK: 1/2-13NC 5ZP
10	PA66244	MOTOR-HYDRAULIC W/CHECK PAINTED
	PA66752	SEAL-MOTOR SHAFT
	PA1021978	SEAL KIT: HYD. MOTOR
	P330499	KEY-6MM X 6MM X 35MM ROUNDED
11	P330381	BUSHING-SPLIT TAPER H X 20MM W/ HRDWR
12	P331853	SENSOR-INDUCTIVE M12(NPN)
	P331856	CORD SET-1.0M M12 TO 3DTM
13	PA330470	ASSY BLOWER (INCLUDES ITEMS 1-12)

ASSY-BLOWER HYDRAULIC GROUND DRIVE

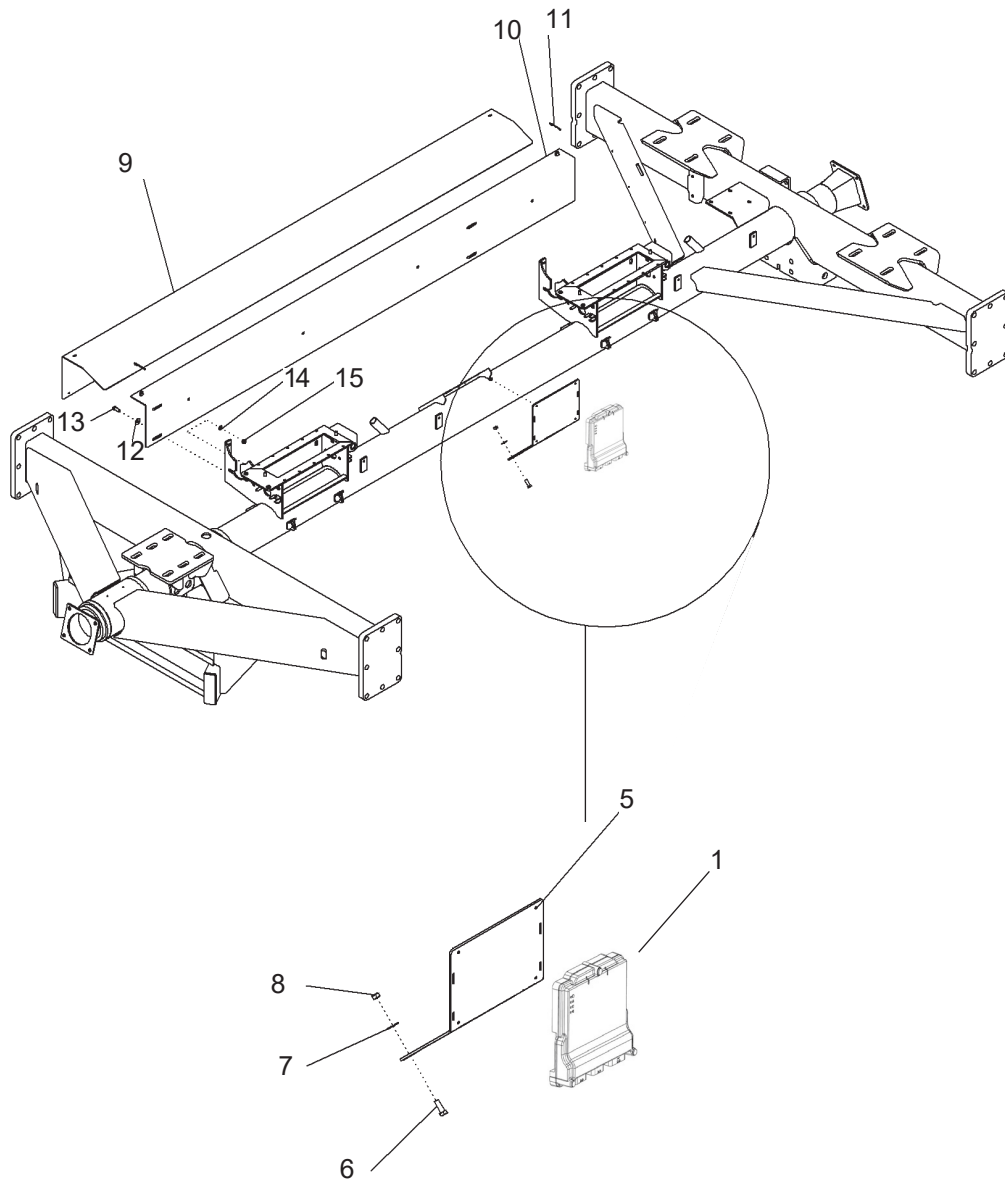
ITEM	PART NO.	DESCRIPTION
1	P330470	ASSY BLOWER (SEE PG. 16-17)
2	PA37065	QUICK COUPLING-MALE -10-8 ORB
3	PA65846	VALVE-SELECTOR PAINTED (3-WAY)
4	P244989	ELB 12MORB X 12MJ
5	PA66248	FTG-TEE: 12MB-12MJ-12MJ
6	P237160	ADP 12MORBX12MJ
7	PA62024	ADP 8 MJ X 6 MORB
8	P240284	ELB 12MJ X 12FJX
9	PA59053	FTG-TEE: 12MJ-12MJ-12FJX
10	PA66270	FTG-RESTRICTOR: 6MB-6MJ-90 .032
11	P88659	NUT-TOPLOCK: 3/8-16NC 5ZP
12	P88531	BOLT-HEX: 3/8-16NC X 3 5ZP
13	P25591	ELB 8MJ X 8FJX
14	P244988	ADP 12MORB X 12FJX
15	PA65857	VALVE-CHECK SAE #12
16	P330077	HOSE: .50 X 024 12FJX-6FJX
17	P330153	HOSE: .50 X 312 10MB-8FJX
18	PA67671	HOSE: .75 X 310 12FJX-12MB
19	PA66245	HOSE: .75 X 024 12FJX-12FJX
20	PA65989	HOSE: .50 X 240 12FJX-12FJX-90 (8" AND 10")
21	PA65897	HOSE: .50 X 240 12FJX-12FJX (8" AND 10")
22	PA37064	QUICK COUPLING-MALE -12-12 ORB
23	PA37065	QUICK COUPLING-MALE -10-8 ORB FTG-CASE DRAIN 3/8 FLAT FACE W/ AUTO VENT (JD AND CNH) (NOT SHOWN)
24	P359433	
25	PA69120	FTG-LOW PRESSURE MOTOR RETURN (3/4) (NOT SHOWN)
26	PA66199	PIONEER TIP 8010-15 (#8 ORB) (NOT SHOWN)
27	PA66961	FTG-ADAPTER: 8FB-12MB (NOT SHOW)
28	PA37066	QUICK COUPLING-FEMALE -12-12 ORB (NOT SHOW)
29	PA37067	QUICK COUPLING-FEMALE -10-8 ORB (NOT SHOWN)



701467-A

ASSY-BLOWER HYDRAULIC DRIVE

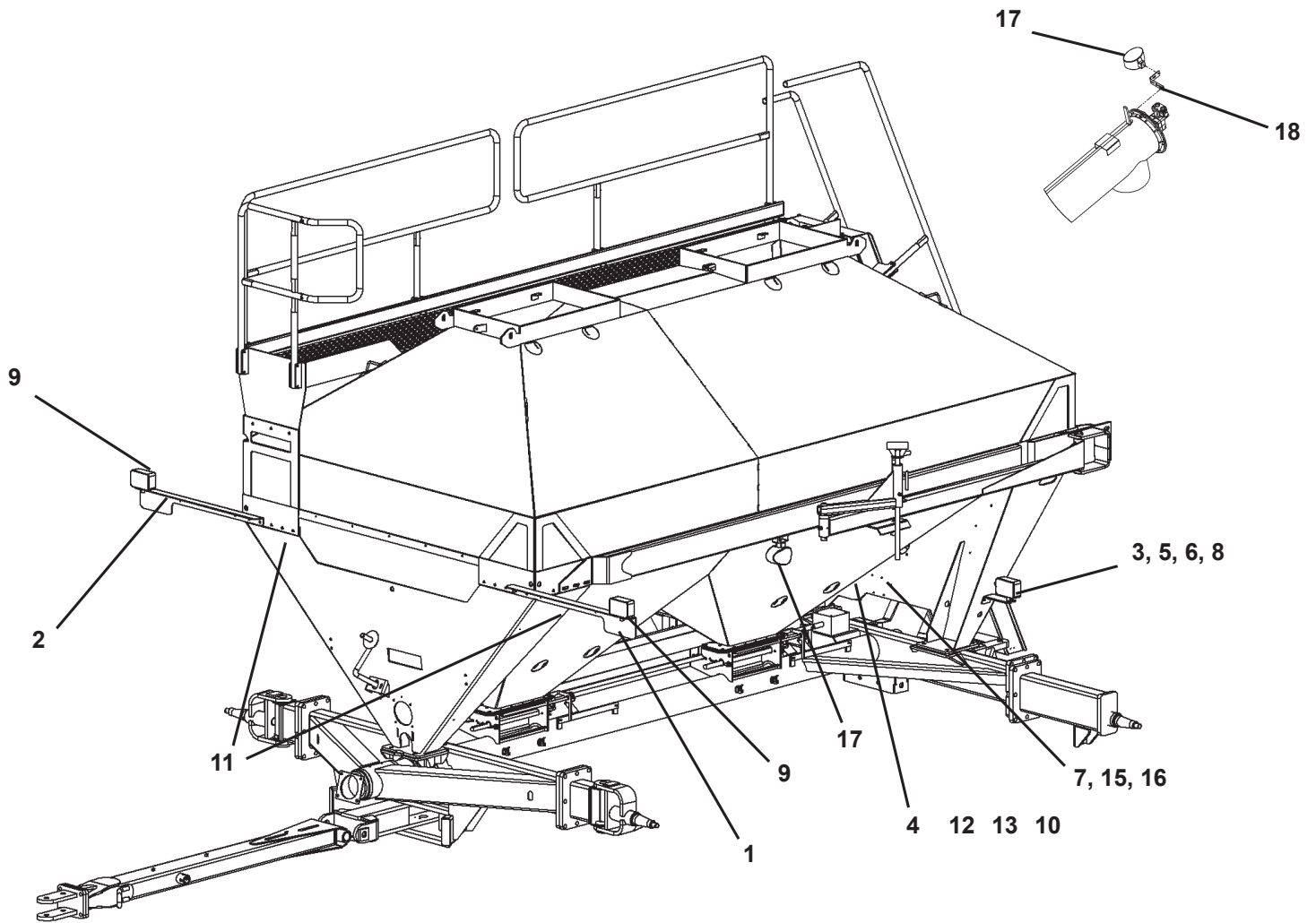
ITEM	PART NO.	DESCRIPTION
1	P330470	ASSY BLOWER (SEE PG. 16-17)
2	PA33641	VALVE-BALL 3/4 SAE
3	PA65846	VALVE-SELECTOR PAINTED (3-WAY)
4	PA67500	WLDMT-VALVE MOUNT
5	PA66938	VALVE-VARIABLE RATE 2-BANK W/CHECK
	PA67495	ASSY-METER VALVE CARTRIDGE & COIL
	P331440	VALVE FLOW CONTROL 4.5G DAMPENED
6	P237160	ADP 12MORB X 12MJ
7	PA66248	FTG-TEE: 12MB-12MJ-12MJ
8	P67140	ADP 6MJ X 6MORB
9	PA62024	FTG-ADAPTER: 6MB-8MJ
10	PA63699	FTG-ELBOW: 12MB-12MJ-45
11	P244989	ELB 12MORB X 12MJ
12	P240284	ELB 12MJ X 12FJX
13	P88569	NUT-NYLON: 1/2-13NC 8YZP
14	P88531	BOLT-HEX: 3/8-16NC X 3 5ZP
15	P61239	ELB 6MJ X 6MORB
16	PA67513	FTG-ELBOW: 4MB-6MJ 90
17	P330153	HOSE: .50 X 312 10MB-8FJX
18	PA67671	HOSE: .75 X 310 12FJX-12MB
19	PA66245	HOSE: .75 X 024 12FJX-12FJX
20	P330561	HOSE: .38 X 021 6FJX-6FJX
21	PA65706	HOSE: .38 X 080 6FJX-6FJX90
22	PA67507	HOSE: .38 X 150 6FJX-6FJX90
23	PA65898	HOSE: .50 X 240 12FJX-12FJX-90
24	PA65897	HOSE: .50 X 240 12FJX-12FJX
25	PA50714	1023147 CLAMP 1/2 ZP
26	PA65814	CLAMP-HOSE: 4.375 ZP
27	PA37064	QUICK COUPLING-MALE -12-12 ORB
28	PA37065	QUICK COUPLING-MALE -10-8 ORB
29	PA57663	FTG-ELBOW: 8MJ-8FJX-45
30	P25591	ELB 8MJ X 8FJX
31	P2244988	ADP 12MORB X 12FJX
32	P359433	FTG-CASE DRAIN 3/8 JD & CNH (NOT SHOWN)
33	PA69120	FTG-LOW PRESSURE RETURN (3/4) (NOT SHOWN)
34	PA66199	PIONEER TIP 8010-15 (#8 ORB) (NOT SHOWN)
35	PA66961	FTG-ADAPTER: 8FB-12MB (NOT SHOWN)
36	PA37066	QUICK COUPLING-FEMALE -12-12 ORB
37	PA37067	QUICK COUPLING-FEMALE -10-8 ORB



701454-A

ASSY-ECU MOUNT

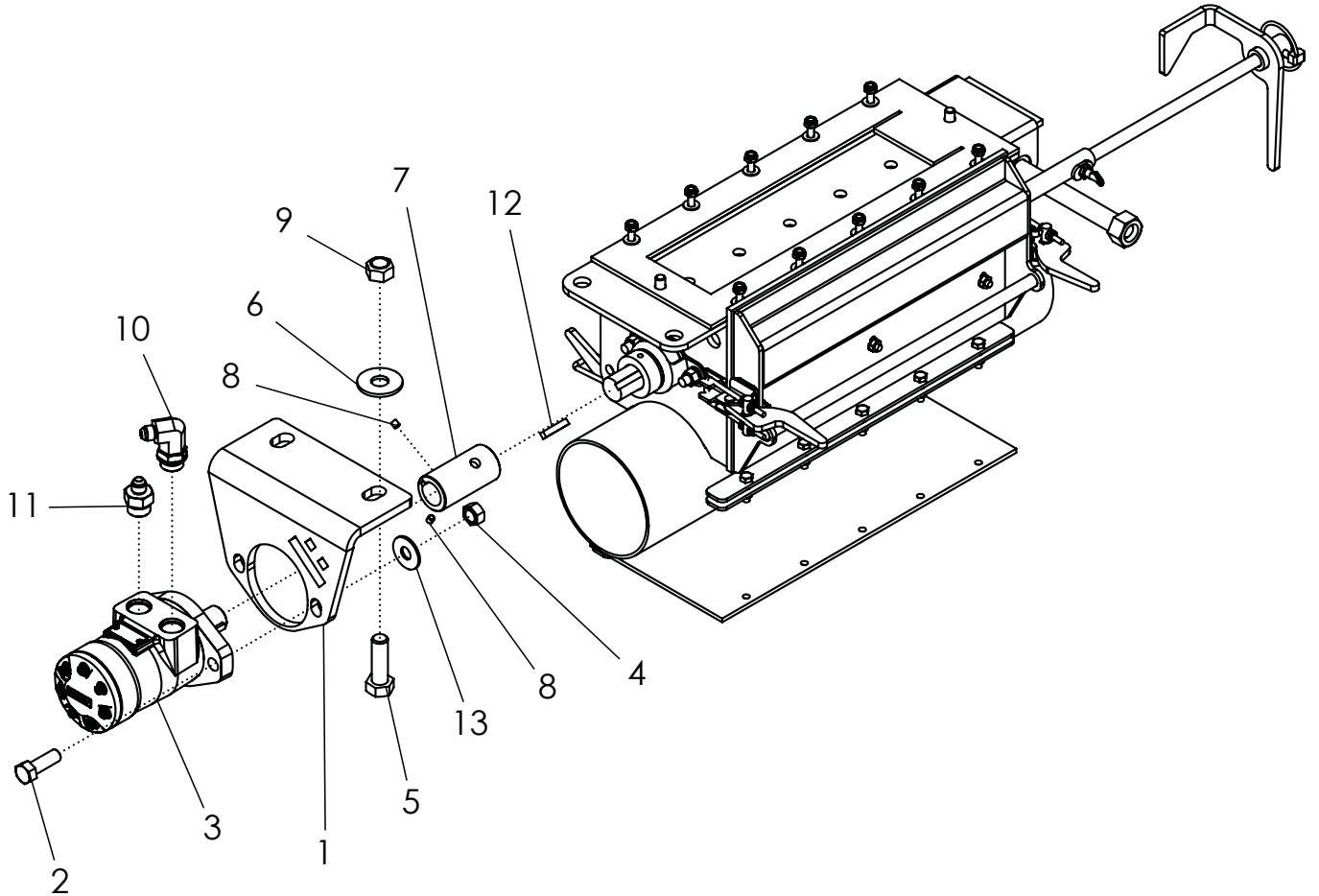
ITEM	PART NO.	DESCRIPTION
1	P331781	MODULE-ECU RVN RCM LVL0
	P331759	MODULE-ECU RVN RCM LVL2
2	PA67554	BOLT-HEX: M5-.8 X 12MM A2-70 SS (ECU MOUNT HDW) (NOT SHOWN)
3	P89635	WSHR HLK #10 SS (ECU MOUNT HDW) (NOT SHOWN)
4	PA1032060	WASHER-FLAT: 5/16 18-8SS (ECU MOUNT HDW) (NOT SHOWN)
5	P331776	SHEET-ECU MOUNT
6	P89034	BLT HEX 3/8-16NC X 1 5Z
7	P88282	BOLT-HEX: 3/8-16NC X 1 5ZP
8	P88659	NUT-TOPLOCK: 3/8-16NC 5ZP
9	PA65452	COVER-HOSE MOUNT PAINTED
10	PA66006	WLDMT-SHIELD BOX PC
11	P23039	PIN-HAIR: .14 X 2.69 ZP
12	P88282	WASHER-FLAT: 3/8 (7/16 X 1ACT) 2ZP
13	P89034	BOLT-HEX: 3/8-16NC X 1 5ZP
14	P88362	WASHER-HELICAL: 3/8ID ZP
15	P88103	NUT-HEX: 3/8-16NC 5ZP
16	PA66323	CLIP-WIRE HARNESS (NOT SHOWN)
17	PA66585	CLIP-WIRE HRNS PURSE LCK WHITE (NOT SHOWN)
18	PA67514	MOUNT-WIRE 1/4 (NOT SHOWN)
19	PA67515	MOUNT-WIRE 3/8 W/INSERT (NOT SHOWN)



701475-A

ASSY-SAFETY LIGHT

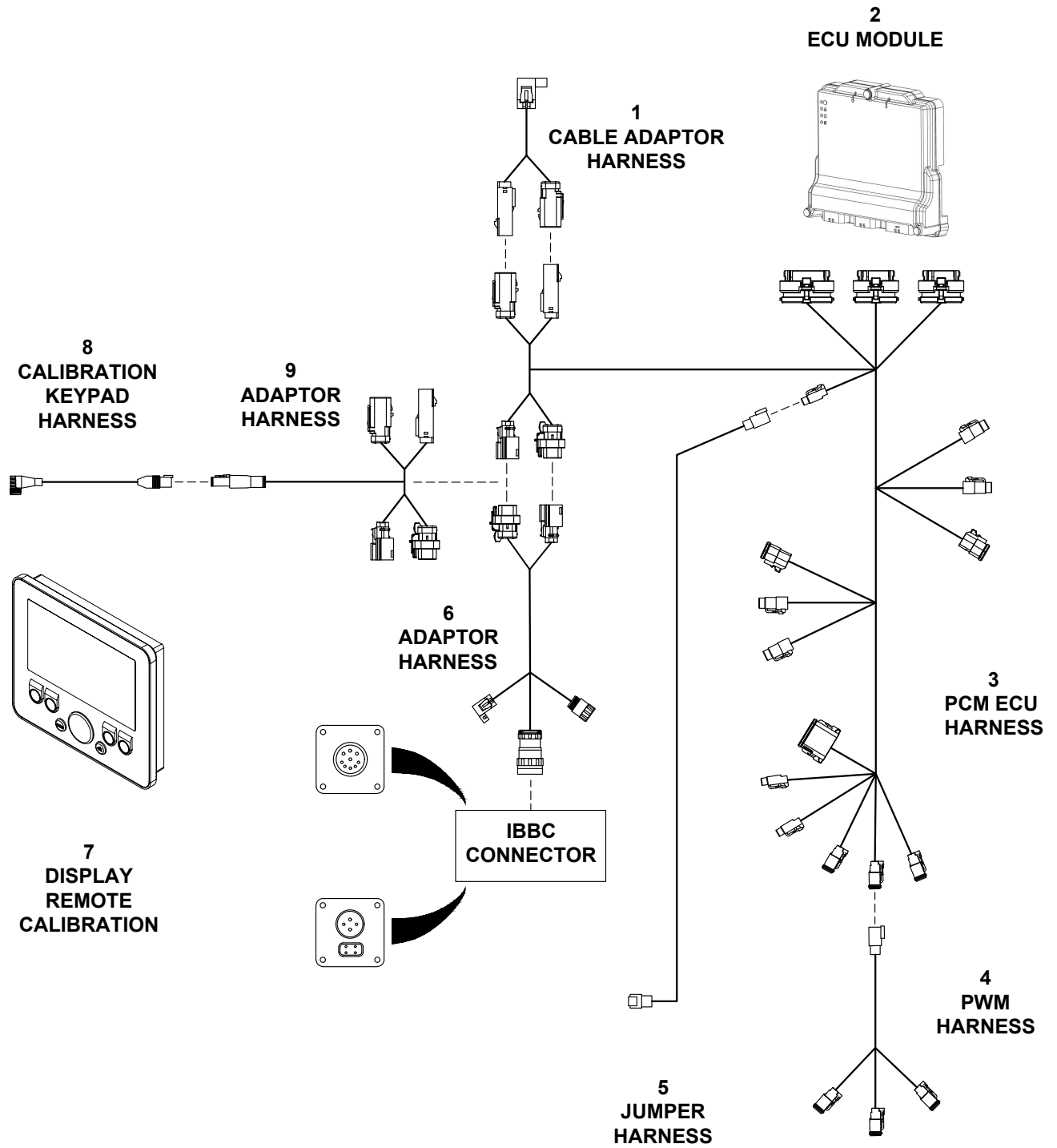
ITEM	PART NO.	DESCRIPTION
1	PA65831	BRACKET-LIGHT LH
2	PA65832	BRACKET-LIGHT RH
3	PA66011	BRACKET-LIGHT
4	PA65833	BRACKET-CONNECTOR 7 PIN
5	P1033271	BOLT-HEX: SS .38 X 1.00 NC (89451)
6	P1033268	NUT-NYLOCK: 3/8NC 18-8SS
7	PA65341	MODULE-INTERFACE
8	PA65333	LAMP-RED TAIL
9	PA65334	LAMP-AMBER FLASHING
10	PA65340	HARNESS-SAFETY LIGHT S279.11
11	PA65354	HARNESS-LIGHT EXTENSION
12	P88478	BOLT-HEX: 5/16-18NC X 1 5ZP
13	P89559	NUT NLK 5/16-18NC 5Z
14	P1013122	TIE-NYLON CABLE 50# X 15.50
15	PA65839	SCREW-P-H: #10 X .75 NC SS
16	PA65348	NUT-HEX: #10-24 SS
17	PA37498	LIGHT-FLOOD OVAL 38 WATT
18	PA37499	SHEET-WORK LIGHT BRACKET
19	PA330532	HARNESS-WORK LIGHT EXT 2800/3350 (NOT SHOWN)



701468-A

ASSY-HYDRAULIC DRIVE

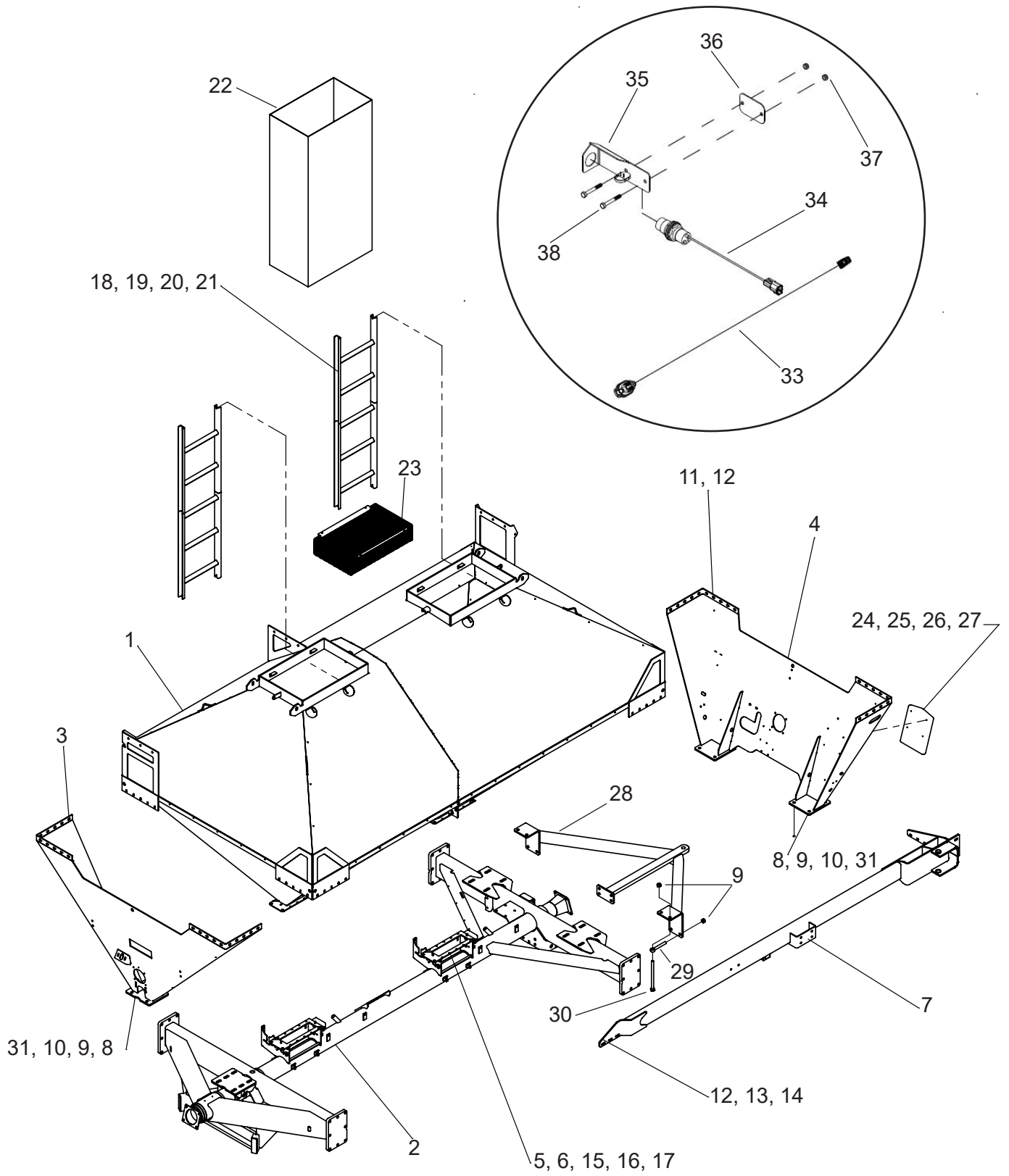
ITEM	PART NO.	DESCRIPTION
1	PA34038	MOUNT-HYD MOTOR METER
2	PA67063	BOLT-HEX: SS .50 X 2.00 NC
3	PA67481	MOTOR-METER DRIVE 9.7 CID
	P330600	KT-SEAL MOTOR HYD DRIVE
	PA67518	SENSOR-METER SPEED (NOT SHOWN)
4	PA67659	NUT-NYLOCK: .50 NC GR2 SS
5	PA34808	BOLT-HEX: SS .63 X 2.00 NC
6	PA67496	WASHER-FLAT: 5/8 18-8SS
7	PA65552	COUPLER
8	PA1013044	SCREW-SET: .25 X .25 NC GR8 NP
9	PA66445	NUT-NYLOCK: .63 NC GR2 SS
10	PA37042	FTG-ELBOW: 10MB-6MJ 90
11	PA66939	FTG-ADAPTER: 6MJ-10MB
12	PA65715	KEY .250 X .250 X 1.250 SS
13	PA37356	WASHER-FLAT: .50 SS
14	PA67489	HARNESS-METER SPEED (NOT SHOWN)



701450-A

2800/3350 AIR CART HARNESS

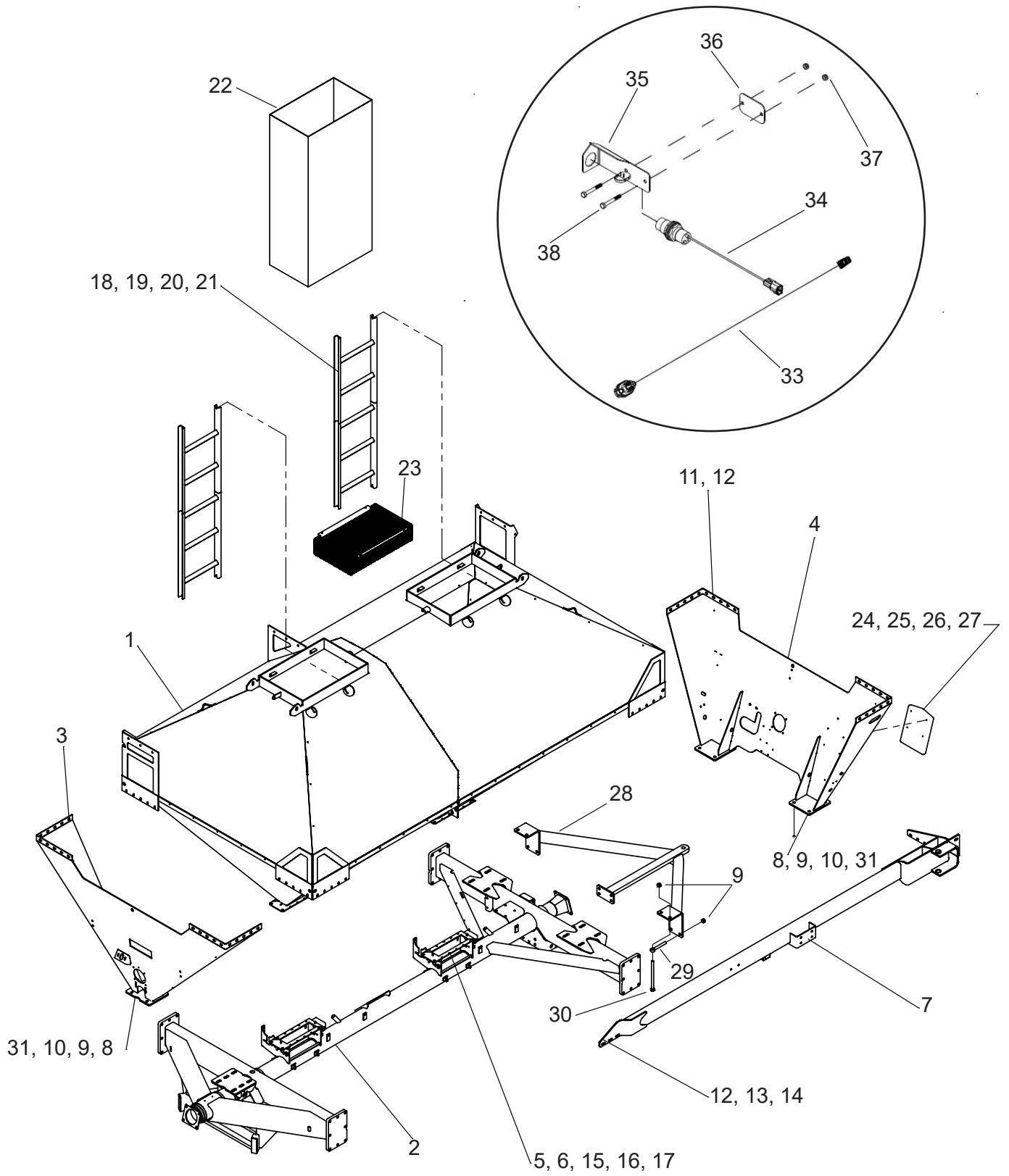
ITEM	PART NO.	DESCRIPTION
1	P331870	HARNESS-EXT ISO 45FT W/MASTER
2	P331781	MODULE-ECU RVN RCM LVL0
	P331759	MODULE-ECU RVN RCM LVL2
3	P331757	HARNESS-RVN AC 2/3BIN GEN1
	P331812	HARNESS-ADP ENCODER
4	P331863	HARNESS-RVN ADP MOTOR CONTROL
5	P330557	HARNESS-WS JUMPER CART
6	P331756	HARNESS-RVN MASTER GEN1
7	P331764	DISPLAY-REMOTE CAL
8	P331765	CABLE-REMOTE DISPLAY
9	P331770	HARNESS-RVN ADP REMOTE CAL TEE



701453-A

ASSY-TANK/RUNNING GEAR

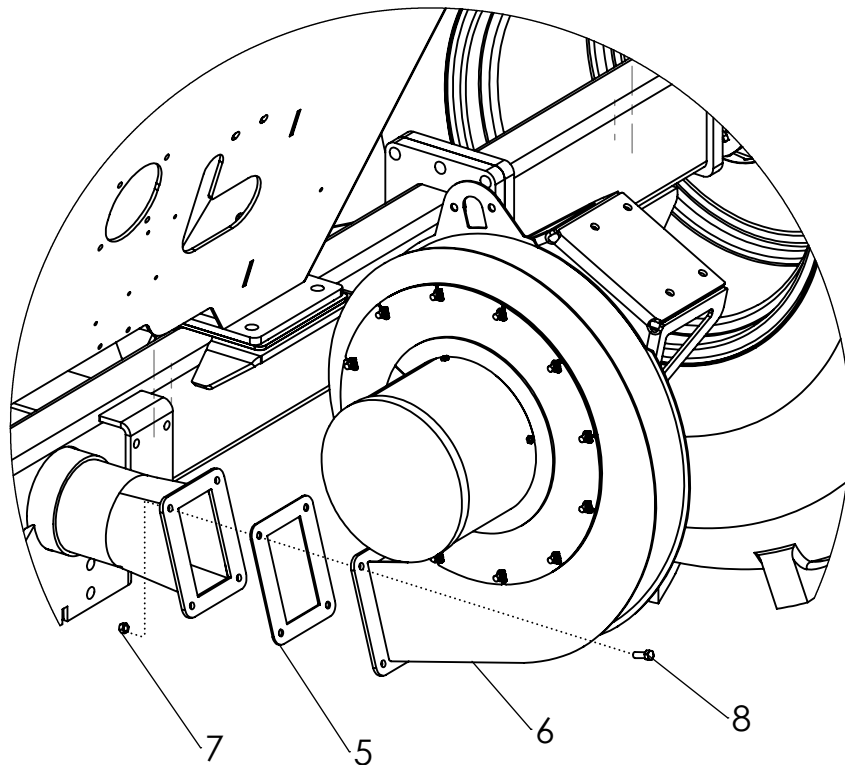
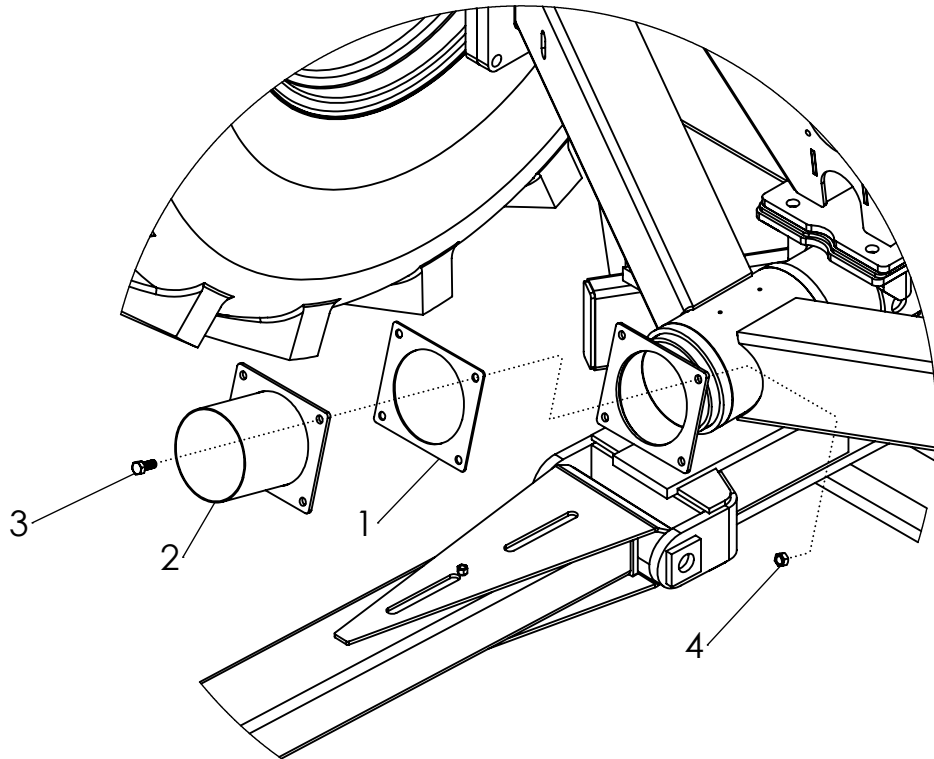
ITEM	PART NO.	DESCRIPTION
1	PA65402	WLDMT-TANK 2800
	PA65938	WLDMT-TANK 3350
2	PA65406	WLDMT-RUNNING GEAR 5IN
	P330471	WLDMT-RUNNING GEAR 6IN
3	PA65525	WLDMT-FRONT PANEL
4	PA65526	WLDMT-REAR PANEL
5	PA65512	GASKET-SEEDBOX
6	PA64504	SEALANT-PROGLAZE--SILICONE (NOT SHOWN)
7	PA65816	WLDMT-AUGER MOUNT
8	P88604	BOLT-HEX: 3/4-10NC X 2 5ZP
9	P88665	NUT-TOPLOCK: 3/4-10NC 5ZP
10	P88131	WASHER-FLAT: 3/4 (13/16 X 2ACT) 2ZP
11	P88554	BOLT-HEX: 1/2-13NC X 1-1/4 5ZP
12	P88517	BOLT-HEX: 1/2-13NC X 1-3/4 5ZP
13	P88661	NUT-TOPLOCK: 1/2-13NC 5ZP
14	P89054	WASHER-FLAT: 1/2SAE ZP
15	PA66043	BOLT-CRG: SS .250 X 1.25 NC
16	P65695	WASHER-FLAT: 1/4 18-8SS
17	P1033269	NUT-NYLOCK: 1/4-20NC 18-8SS
18	PA65678	WLDMT-LADDER INSIDE 2800
	PA65942	WLDMT-LADDER INSIDE 3350
19	P1033271	BOLT-HEX: SS .38 X 1.00 NC (89451)
20	P1033268	NUT-NYLOCK: 3/8NC 18-8SS
21	PA65778	WASHER-FLAT: 3/8 X 1 USS 18-8SS
22	PA66549	KT-LOW VOLUME TANK INSERT 2800
	PA66550	KT-LOW VOLUME TANK INSERT 3350
	PA34158	INSERT-LOW VOLUME 2800 (RED)
	PA66584	INSERT-LOW VOLUME 3350 (GREEN)
	PA66788	FRAME-LOW VOLUME INSERT
	P89357	NUT-COUPLER: 1/2-13NCX1-3/4 NP
	P88561	NUT-JAM: 1/2-13NC 2ZP
23	PA1026562	WLDMT-SCREEN BASKET PC
24	PA64635	CASE-MANUAL STORAGE
	P330538	MANUAL-OPERATORS 2800/3350 (ENGLISH)
25	P88993	BOLT-HEX: 1/4-20NC X 3/4 5ZP
26	P88261	WASHER-FLAT: 1/4 (5/16X 3/4ACT) 2ZP
27	P89501	NUT TOP LK 1/4-20NC 5Z
28	P330562	WLDMT-REAR HITCH
29	PA56814	BOLT-EYEBOLT .75 X 6.00 ZP
30	P88295	BOLT-HEX: 5/8-11NC X 6 5ZP
31	PA330497	BOLT-HEX: 5/8-11NC X 6 5ZP



701453-A

ASSY-TANK/RUNNING GEAR

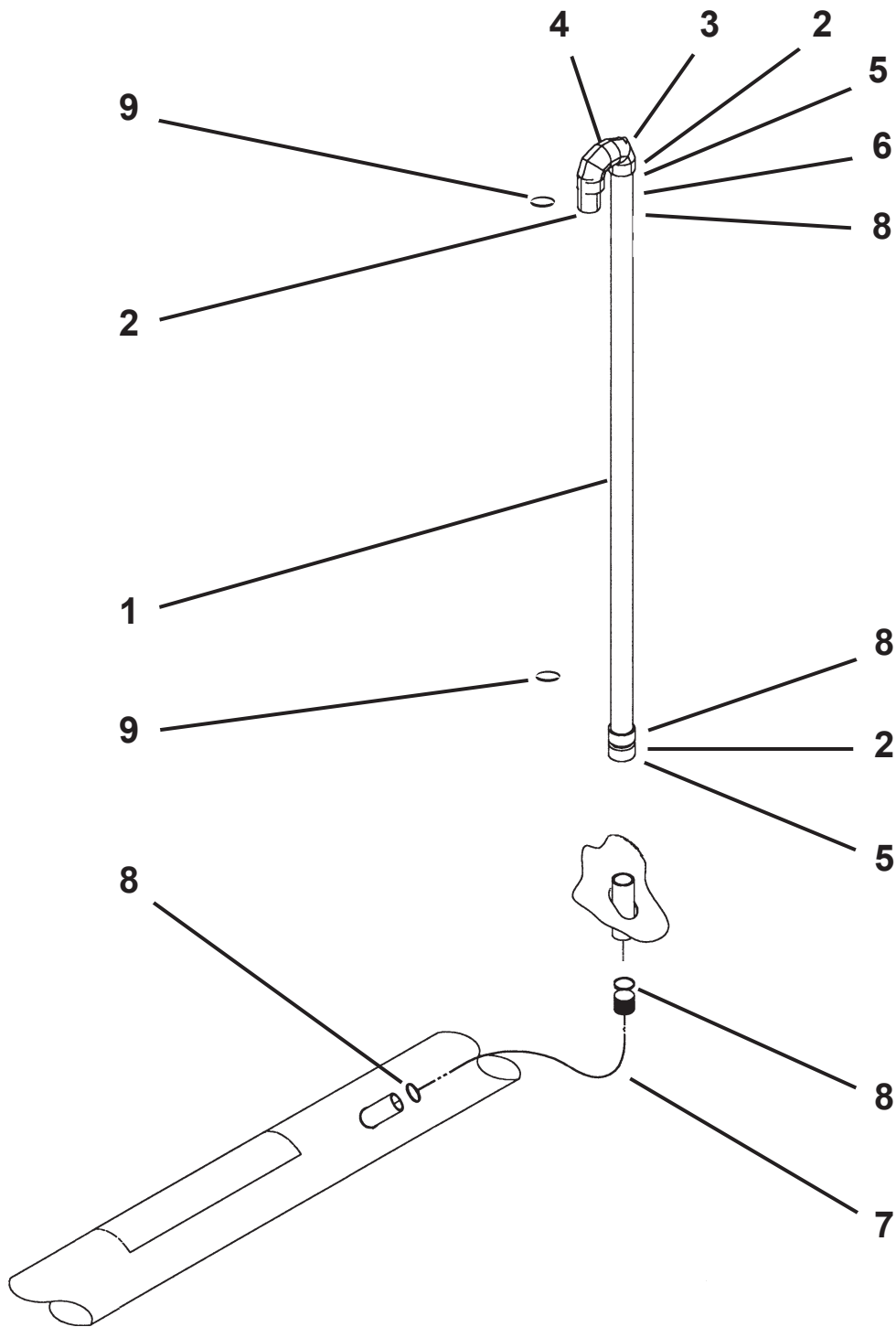
ITEM	PART NO.	DESCRIPTION
32	P330498	PLATE-REAR SPACER
33	P331782	HARNESS-TANK BULKHEAD
34	P331814	BIN LEVEL SENSOR SHEET-BIN
35	P331635	SENSOR MNT
36	PA65837	PLATE-BOLTING
37	P1033269	NUT-NYLOCK: .25 NC GR2 SS (A66348)
38	PA65838	BOLT-HEX: SS .25 X 2.00 NC



M6024-B

ASSY-AIRSTREAM SINGLE

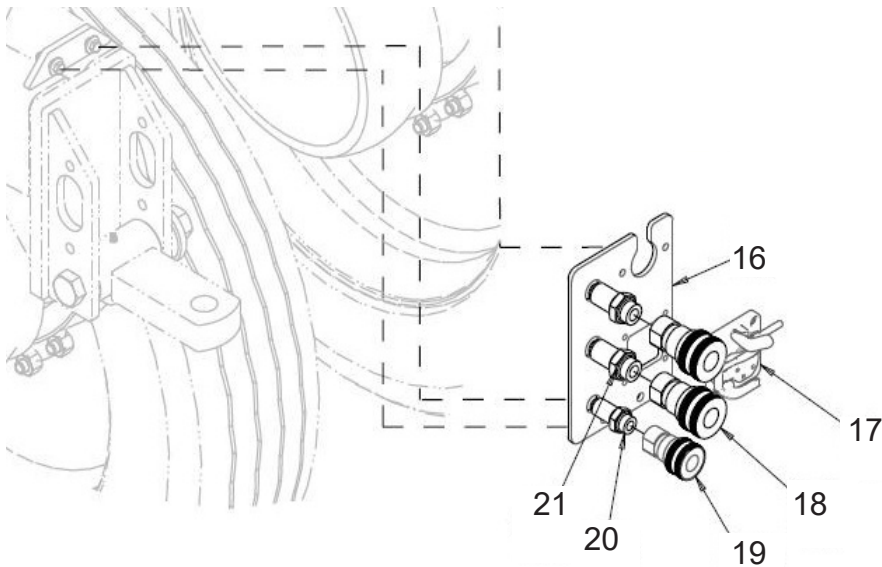
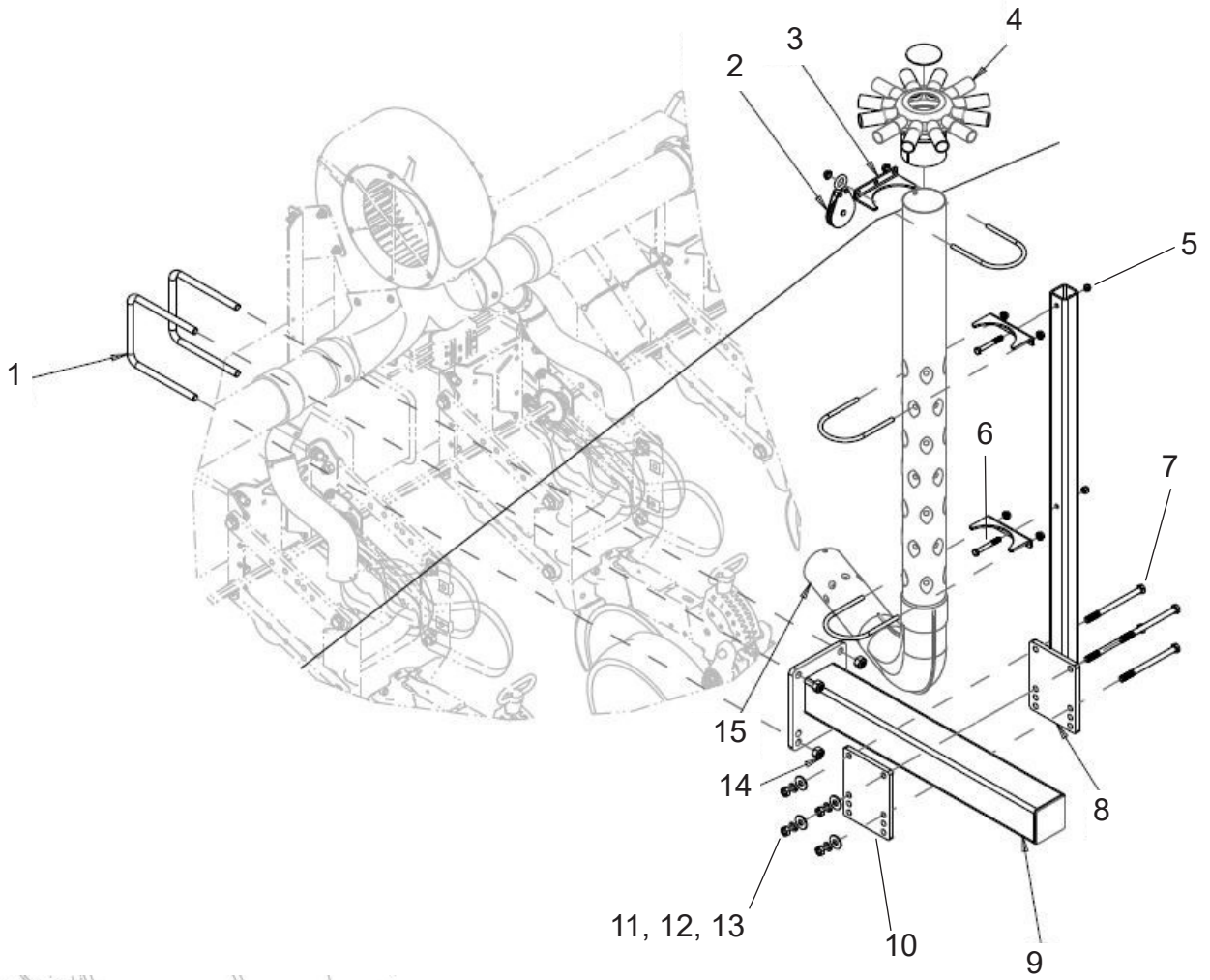
ITEM	PART NO.	DESCRIPTION
1	P330536	GASKET .13 X 8 X 7-6 ID
2	P330535	WLDMT-FLANGE & TUBE 6
3	P88554	BOLT-HEX: 1/2-13NC X 1-1/4 5ZP NUT-
4	P88661	TOPLOCK: 1/2-13NC 5ZP GASKET-FAN
5	P330554	TRANSITION
6	P330470	ASSY BLOWER (SEE PG. 16-17)
7	P88659	NUT-TOPLOCK: 3/8-16NC 5ZP
8	P89034	BOLT-HEX: 3/8-16NC X 1 5ZP



701455-A

ASSY-PRESSURIZATION KIT

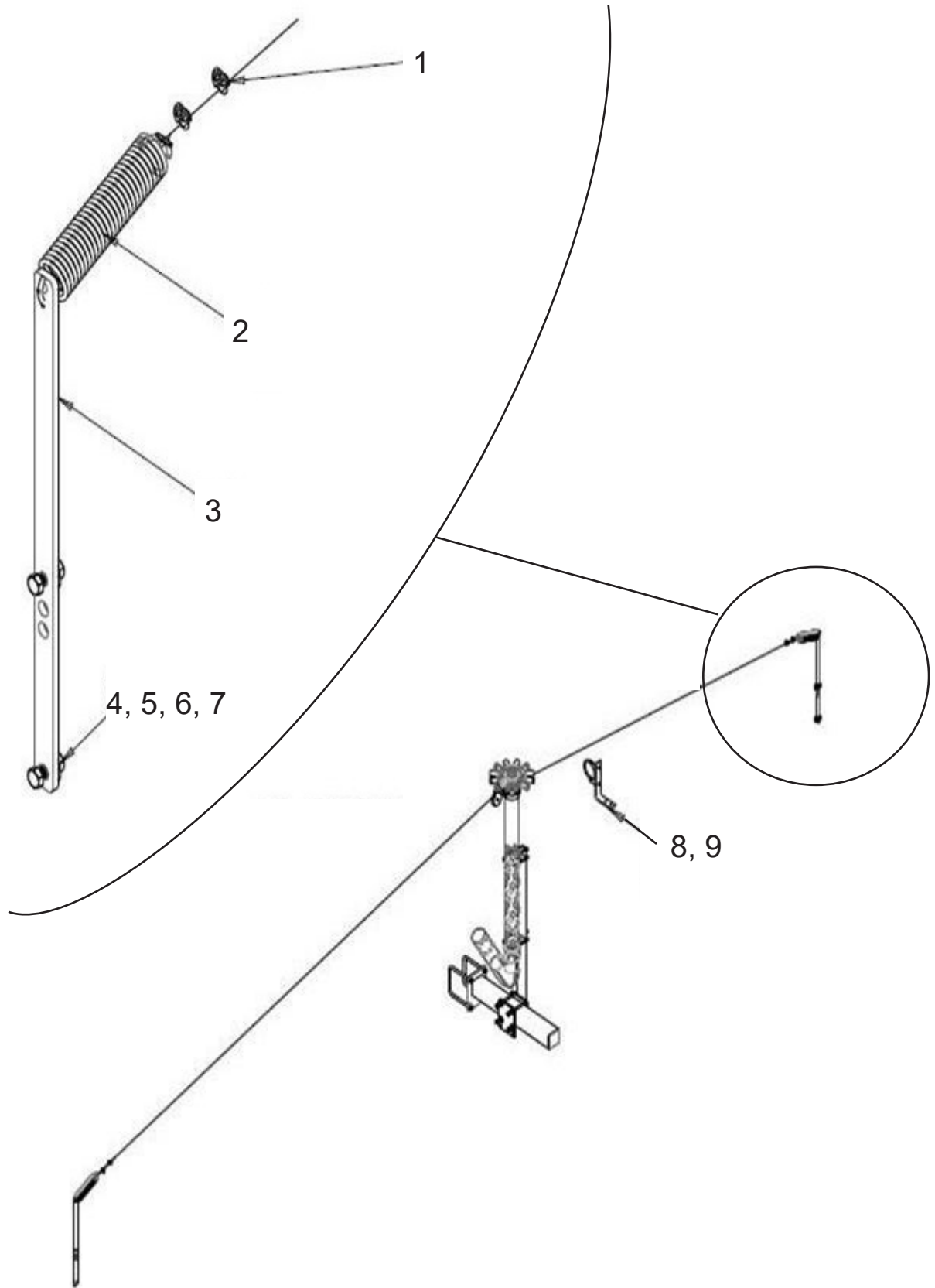
ITEM	PART NO.	DESCRIPTION
1	PA65580	HOSE-KANAFLEX 112 1.25 ID BULK (NEED 61") (2800 AS) HOSE-KANAFLEX 112 1.25 ID BULK (NEED 71") (3350 AS)
2	PA65881	PIPE-PVC 1.25 SCH 40 X 4
3	PA65882	ELBOW-PVC 1.25 SCH 40 F X F GLUE
4	PA65883	PIPE-PVC 1.25 SCH 40 X 3
5	PA65884	ADAPTER-PVC 1.25 F GLUE X 1.25 FP
6	PA65885	FTG-PVC 1.25 MP X 1.25 MB
7	PA34489	CEMTNT-PVC-16 OZ
8	PA65880	HOSE-KANAFLEX 112 1.25 ID BULK (NEED 19.5")
9	PA1026358	CLAMP-HOSE: #16 0.81-1.50



701474-A

24 ROW WHITE PLANTER MANIFOLD

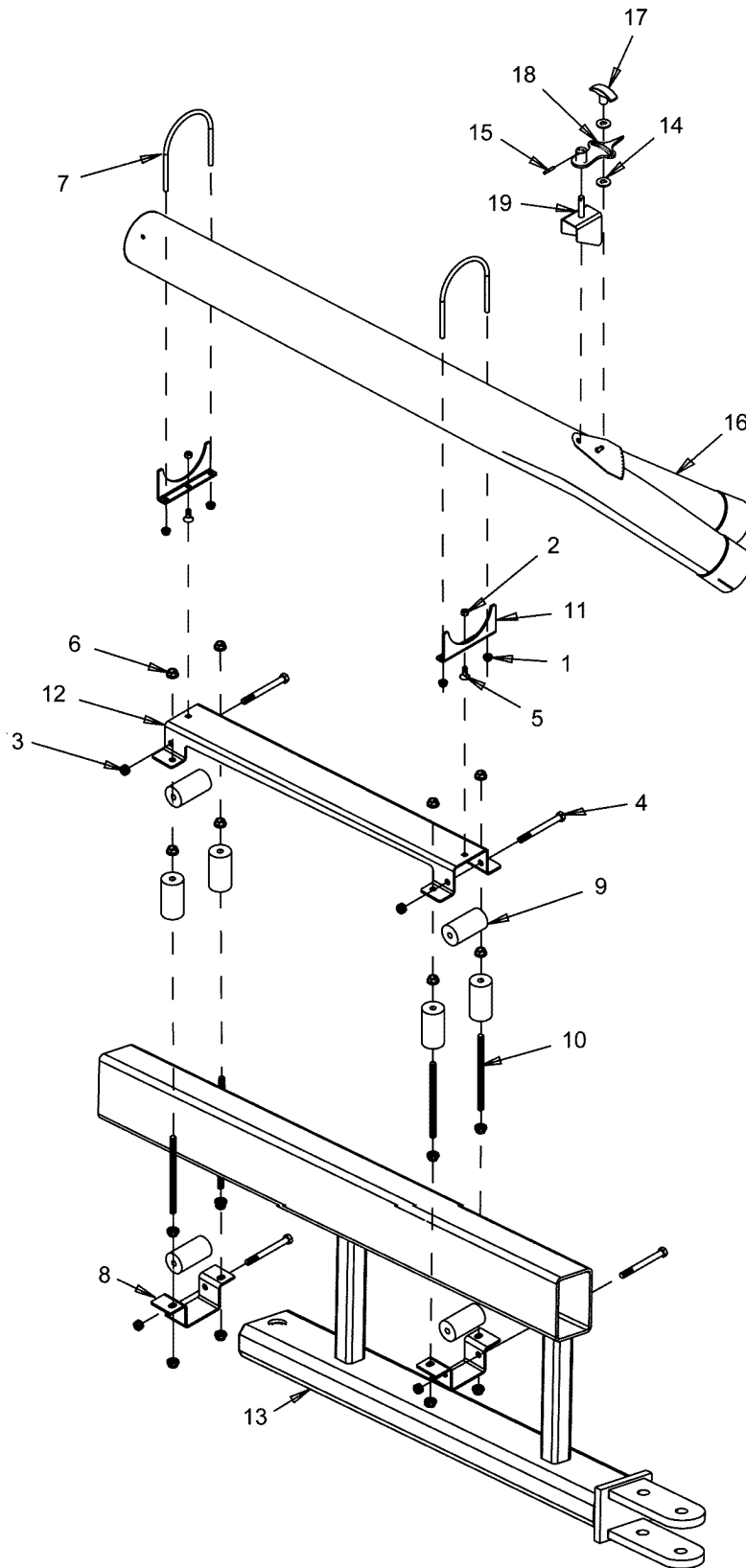
ITEM	PART NO.	DESCRIPTION
1	PA68177	BLT-U 5/8-11NC X 7 X 8-1/2 Z
2	PA66676	PULLEY
3	PA66157	ASSY-4 VERTICAL TUBE CLAMP
	PA66887	PLATE-MUFFLER SADDLE 4
	PA66889	U-BOLT: RND .38 X 4.00 X 6.00 ZP
	P88463	NUT-HEX: WHIZ 3/8-16NC (FLANGED) 2ZP
4	PA33912	ASSY-MANF PRI 12 X 4.00 X 1.25
	PA33946	RUBBER PAD (SNAP IN) 3.25
5	P88103	NUT-HEX: 3/8-16NC 5ZP
6	P88531	BOLT-HEX: 3/8-16NC X 3 5ZP
7	P89162	BOLT-HEX: 1/2-13NC X 7 5ZP
8	PA66672	WLDMT-PRI TUBE MOUNT 4 PC
9	P330856	WLDMT-PLANTER MANF MOUNT
10	PA66674	PLATE-PRIMARY MOUNT GEN PC
11	P88104	NUT-HEX: 1/2-13NC 5ZP
12	P88303	WASHER-LOCK: HELICAL 1/2ID (9/16ACT) ZP
13	P88347	WASHER-FLAT: 1/2 (9/16 X 1-3/8ACT) 2ZP
14	P88845	NUT-TOPLOCK: 5/8-11NC 5ZP
15	PA66150	WLDMT-ELBOW 4.00 X 58 PC
16	P330860	PLATE-PLANTER BULKHEAD
17	P320196	CONNECTOR-ISO BOX IBBC (SLAVE)
18	PA37066	QUICK COUPLING-FEMALE -12-12 ORB
19	PA37067	QUICK COUPLING-FEMALE -10-8 ORB
20	PA36191	FTG-BULKHEAD: 10MB-10MJ
21	PA36190	FTG-BULKHEAD: 12MB-12MJ



701476-A

PLANTER MAINFOLD CABLE ASSY

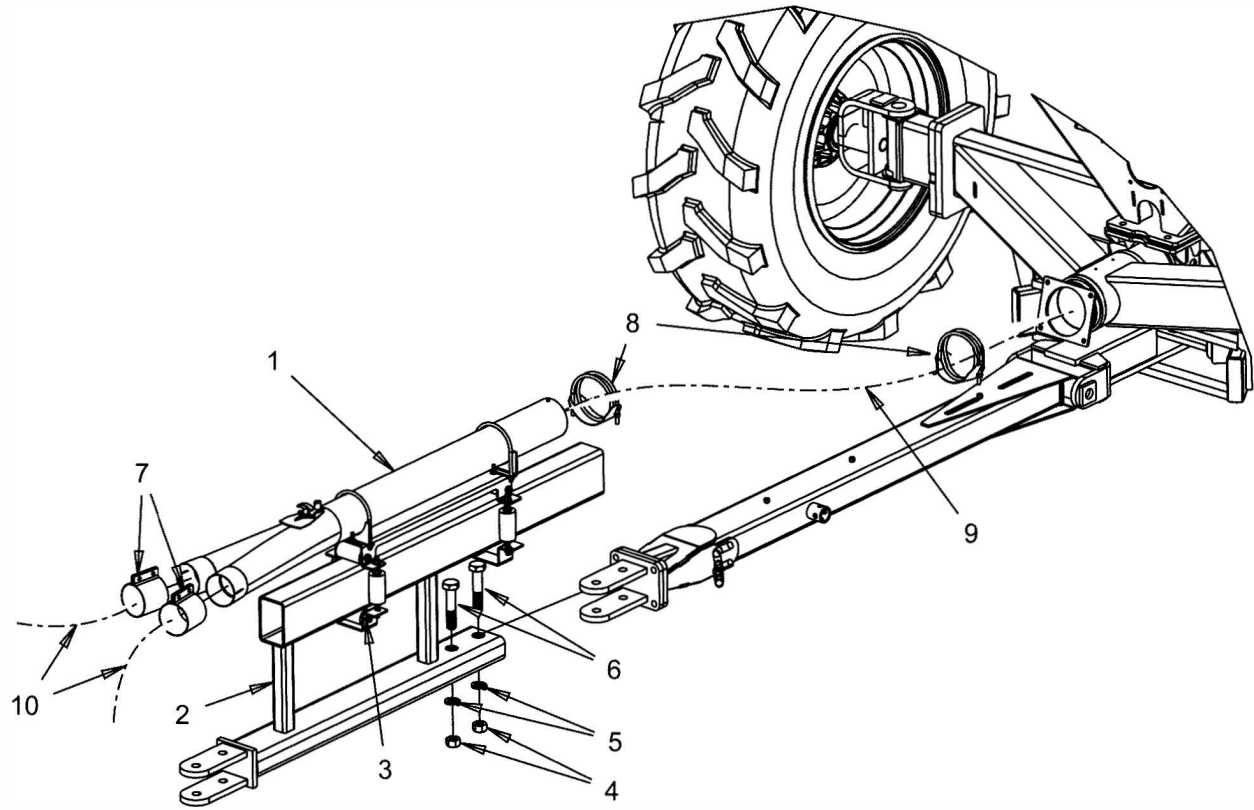
ITEM	PART NO.	DESCRIPTION
1	PA66677	CABLE CLAMP
2	PA53159	SPRING-EXTENSION
3	P330859	PLATE-SPRING MOUNT
4	P88104	NUT-HEX: 1/2-13NC 5ZP
5	P88303	WASHER-LOCK: HELICAL 1/2ID (9/16ACT) ZP
6	P88347	WASHER-FLAT: 1/2 (9/16 X 1-3/8ACT) 2ZP
7	P88475	BOLT-HEX: 1/2-13NC X 1-1/2 5ZP
8	P330861	PLATE-HOSE MOUNT PLANTER
9	PA66150	WLDMT-ELBOW 4.00 X 58 PC



M6202-A

DRAW POLE EXTENSION

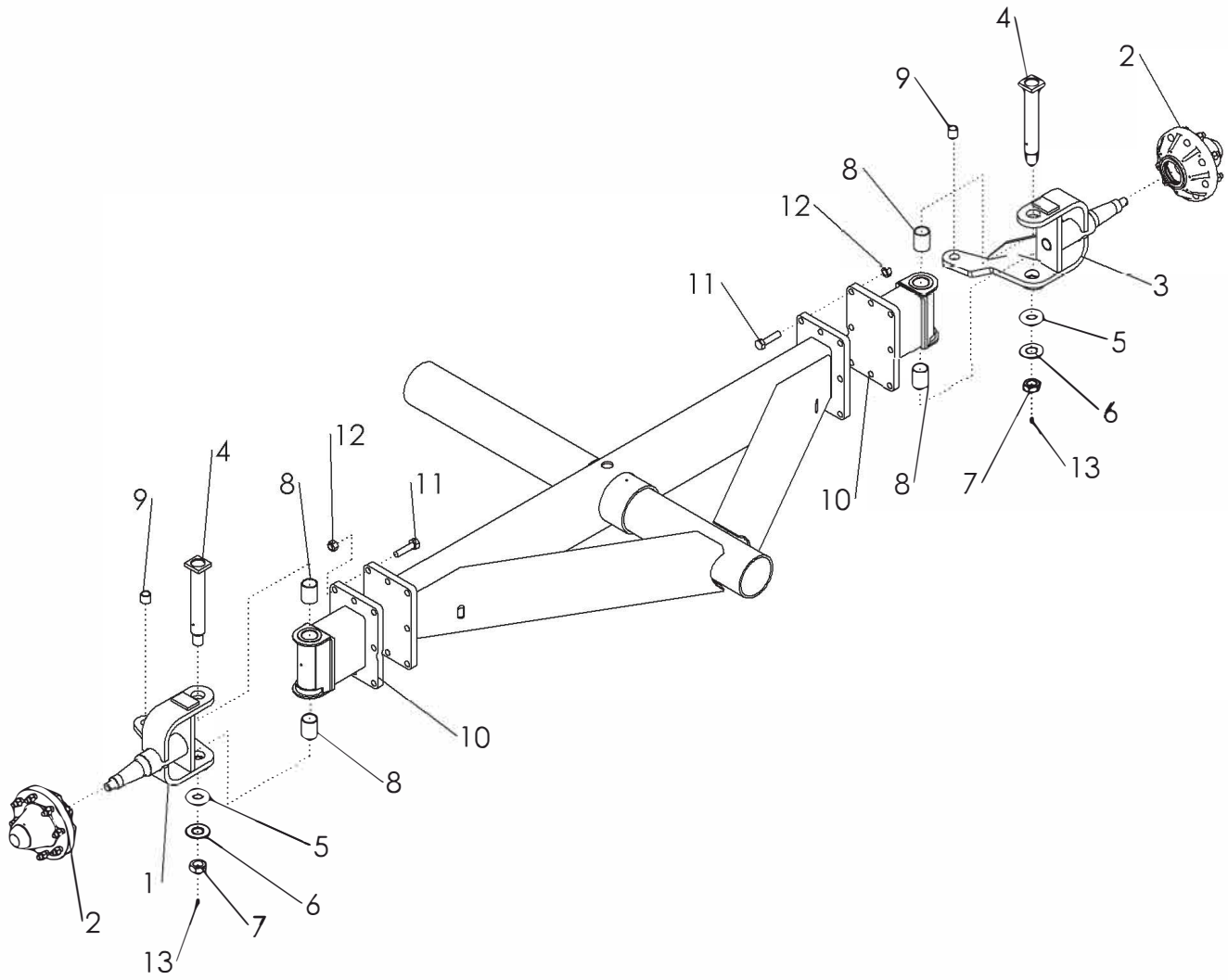
ITEM	PART NO.	DESCRIPTION
1	P88659	NUT-TOPLOCK: 3/8-16NC 5ZP
2	P88463	NUT-HEX: WHIZ 3/8-16NC (FLANGED) 2ZP
3	P88661	NUT-TOPLOCK: 1/2-13NC 5ZP
4	P88681	BOLT-HEX: 1/2-13NC X 5 5ZP
5	P89009	BOLT-CARRIAGE: 3/8-16NC X 1 (88467) 5ZP
6	P89064	NUT-LOCK: WHIZ 1/2-13NC FLANGED ZP
7	PA1033298	BLT-U RND .38 X 5.00 X 6.63 ZP
	P320459	BLT-U RND .38 X 6.00 X 7.63 ZP
8	PA66141	BRACKET-ROLLING MNT BOTTOM PC
9	PA66142	ROLLER-HORIZONTAL & VERTICAL
10	PA66468	ROD-THREADED .500 X 8.00 ZP
11	PA675056	PLATE-MUFFLER SADDLE 5 PC
	P320467	PLATE-MUFFLER SADDLE 6
12	PA67555	PLATE-ROLLING MOUNT
13	PA67036	WLDMT-DRAWPOLE EXTENSION
14	P88282	WASHER-FLAT: 3/8 (7/16 X 1 ACT) 2ZP
15	P89535	PIN-ROLL: 5/32 DIA X 1 ZP
16	PA66145	ASSY-FLOW DIVIDER 5.00 X 4.00 LONG
	PA66876	ASSY-FLOW DIVIDER 6.00 X 4.00
17	PA65983	GRIP-ADJUSTER
18	PA66114	WLDMT-FLOW POINTER ZP
19	PA66166	DEFLECTOR-MANIFOLD



M6203-A

DRAW POLE EXTENSION MOUNTING

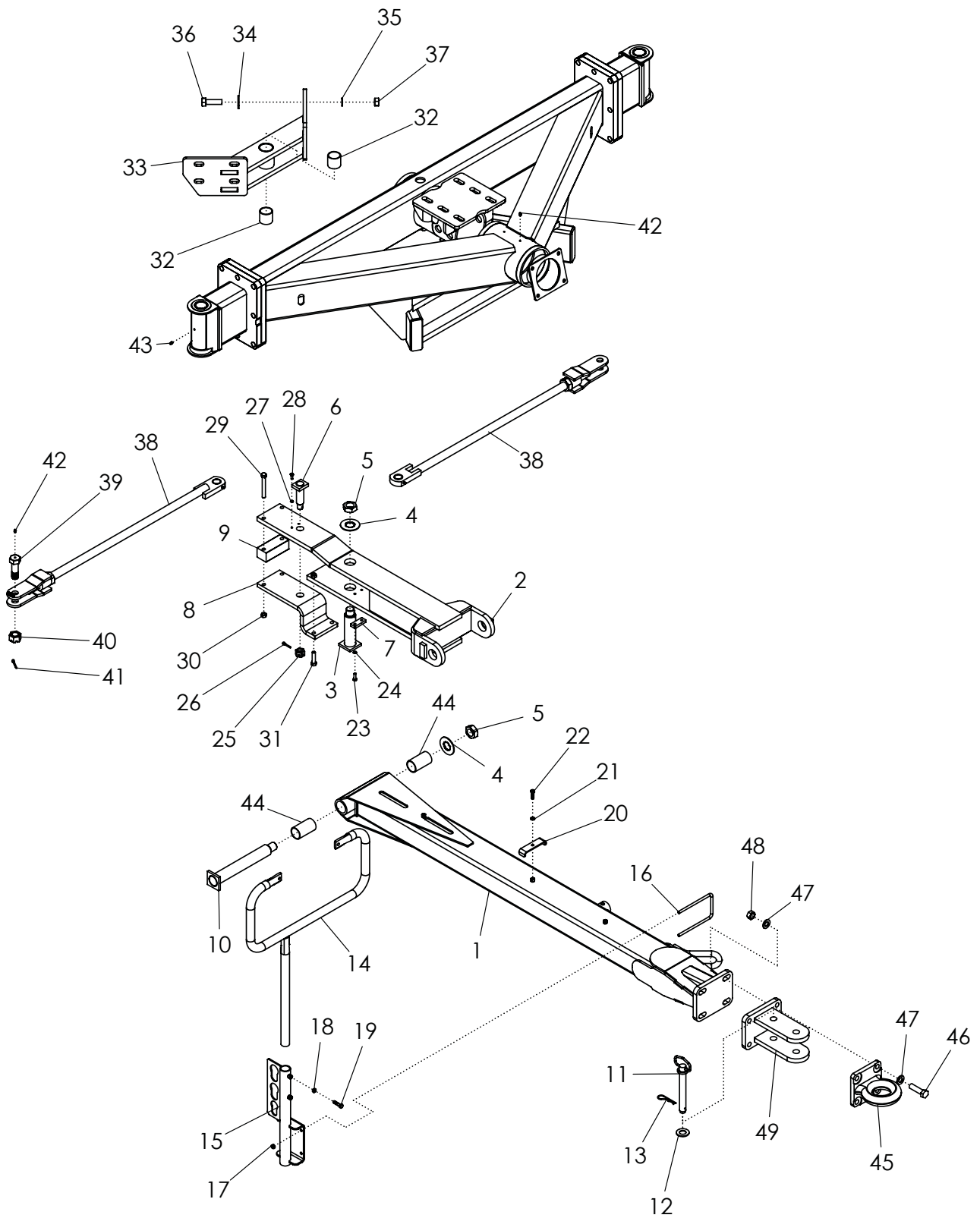
ITEM	PART NO.	DESCRIPTION
1	PA34498	ASSY-FLOW DIVIDER 5 X 4 SHORT
	PA66876	ASSY-FLOW DIVIDER 6 X 4 SHORT
2	PA67036	WLDMT-DRAWPOLE EXTENSION
3	NS	ASSY-ROLLING MNT GEN (5") (SEE PG. 42-43)
	NS	ASSY-ROLLING MNT GEN (6") (SEE PG. 42-43)
4	P88125	NUT-HEX: 1-8NC 5ZP
5	P88617	WASHER-HELICAL: 1ID ZP
6	P88670	BOLT-HEX: 1-8NC X 5-1/2 5ZP
7	PA34139	CLAMP-TORCTITE 4"
8	PA36154	CLAMP-5 SPIRAL (POWER-LOCK)
	PA36155	CLAMP-6 SPIRAL (POWER-LOCK)
9	PA34845	HOSE-KANAFLEX 100 URD 5.00 X 12.5 FT
	P320629	HOSE-KANAFLEX 100 URD 6.00 X 12 FT
10	PA34118	HOSE-FLEX SS 4.00 X 20 FT
11	P331339	HOSE: .75 X 48 12MB-12MB (NOT SHOWN)
12	P330101	ADP 12FB-12FB (NOT SHOWN)
13	P331340	HOSE: .50 X 48 10MB-10MB (NOT SHOWN)
14	P330326	FTG-ADAPTER: 10FB-10FB (NOT SHOWN)
15	PA67576	HARNESS-ISOBUS EXT 6 (NOT SHOWN)



701456-A

ASSY-AXLES FRONT

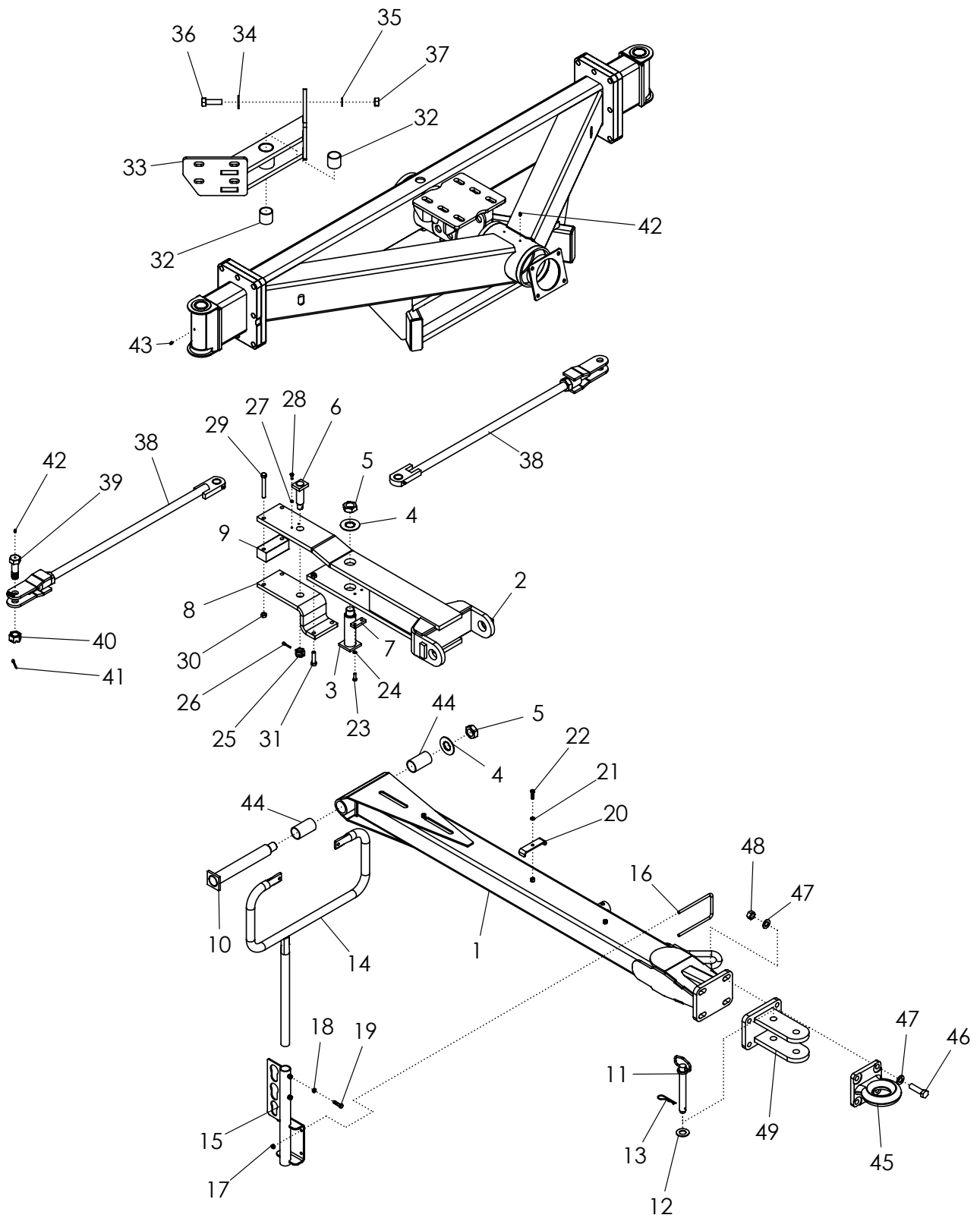
ITEM	PART NO.	DESCRIPTION
1	PA65429	WLDMT-TRUNNION RH
2	P320159	ASSY-HUB 8 BOLT W/BRAKE (BLACK) (SEE PG. 55)
3	PA65430	WLDMT-TRUNNION LH
4	PA65439	WLDMT-KING PIN (ZP)
5	PA1020688	BEARING-THRUST: TIMKEN T177
6	PA1020675	WASHER-STAR: INTERNAL 1.25 ZP
7	P89425	NUT-JAM: 1-1/4-12NF 5ZP
8	PA67691	BUSHING-MACH. 1.760 X 2.00 X 2.50
9	P330833	COMPOSITE BEARING BUSHING 1.00 ID X 1.25 OD X 1.13
10	PA67653	WLDMT-TRUNNION MOUNT
11	P88291	BOLT-HEX: 3/4-10NC X 3 5ZP
12	P88665	NUT-TOPLOCK: 3/4-10NC 5ZP
13	P88550	FITTING-GREASE: 1/4-28 3038-B ZP



701457-A

ASSY-DRAWPOLE & STEERING LINKAGE

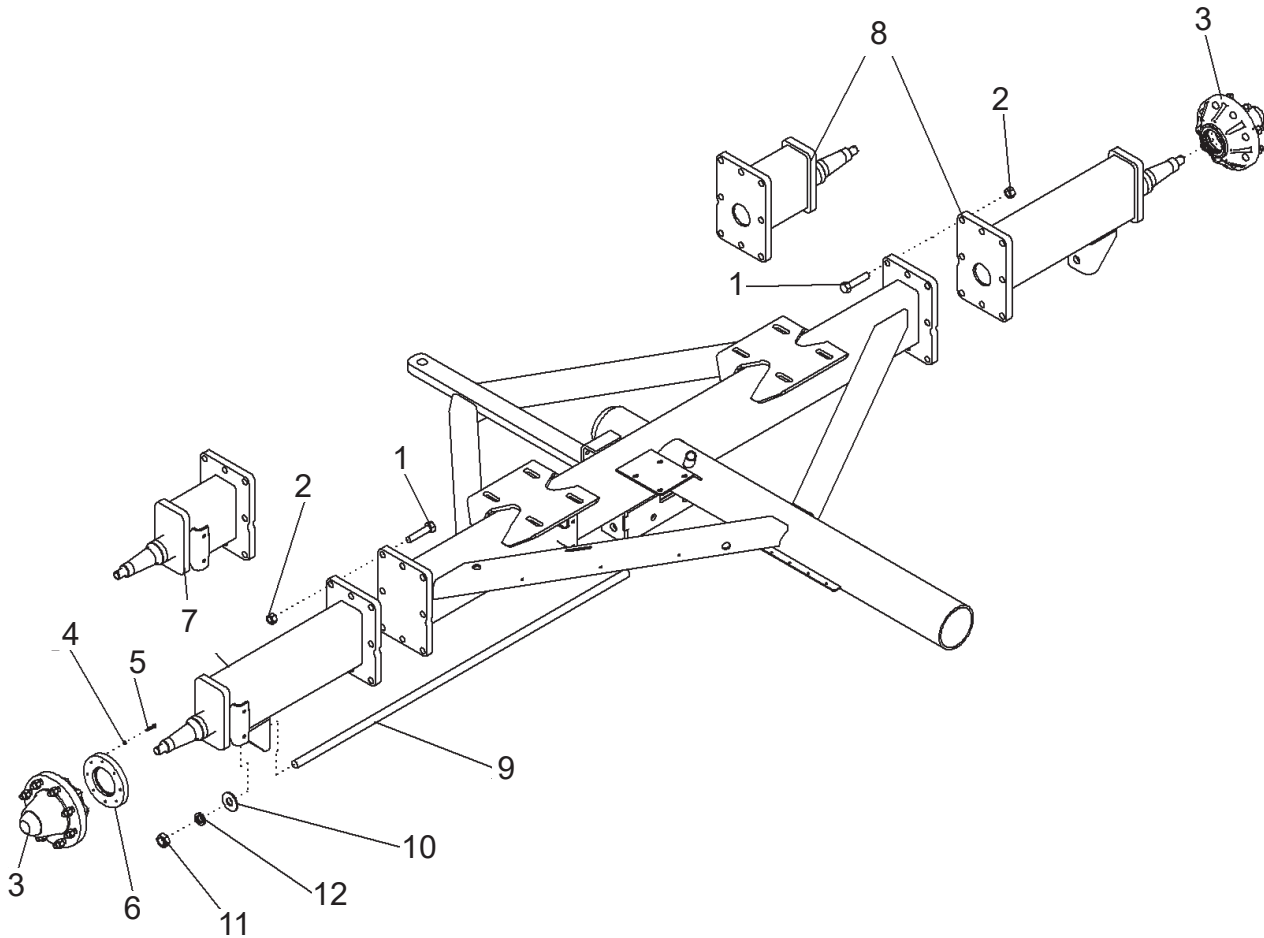
ITEM	PART NO.	DESCRIPTION
1	PA65431	WLDMT-DRAWPOLE
2	PA65432	WLDMT-HITCH
3	PA65442	WLDMT-KING PIN
4	PA1020675	WASHER-STAR: INTERNAL 1.25 ZP
5	P89425	NUT JAM 1-1/4-12NF 5Z
6	PA65440	WLDMT-KING PIN HITCH
7	PA65435	PLATE-STOP ZP
8	PA65433	PLATE-HITCH
9	PA65434	BLOCK-SPACER
10	PA65441	WLDMT-PIN TONGUE HINGE
11	PA1027881	HITCH-PIN
12	P88738	WSHR FLAT 1SAE(1-1/16 X 2ACT) Z
13	P89500	PIN-HAIR: 3/16 X 3-1/4 ZP
14	PA65887	WLDMT-CRADLE HOSE SUPPORT
15	PA66010	WLDMT-MOUNT HOSE SUPPORT
16	P89040	BLT-U 3/8-16NC X 4 X 7 Z
17	P88659	NUT-TOPLOCK: 3/8-16NC 5ZP
18	P88564	NUT JAM 3/8-16NC 5Z
19	P88553	BLT HEX 3/8-16NC X 1-1/2 5Z
20	PA65813	CLAMP-HOSE: 4.375
21	P88362	WASHER-HELICAL: 3/8ID ZP
22	P88555	BLT HEX 3/8-16NC X 1-1/4 5Z
23	P88478	BOLT-HEX: 5/16-18NC X 1 5ZP
24	P88358	WASHER-HELICAL: 5/16ID ZP
25	P88340	NUT-CASTLE: 7/8-14NF 2ZP
26	P88304	NUT-LOCK: 2 POS 1/2-20NF 2ZP
27	P88262	WASHER-LOCK: 1/4ID (5/16ACT) ZP
28	P88993	BOLT-HEX: 1/4-20NC X 3/4 5ZP
29	P88595	BOLT-HEX: 1/2-13NC X 4 5ZP
30	P88661	NUT-TOPLOCK: 1/2-13NC 5ZP
31	P88679	BOLT-HEX: 1/2-13NC X 2 5ZP
32	PA65398	BUSHING-MACH. 1.765 X 2.00 X 1.875
33	PA65760	WLDMT-HITCH PIVOT
34	P88131	WASHER-FLAT: 3/4 (13/16 X 2ACT) 2ZP
35	P88130	WASHER-LOCK: HELICAL 3/4ID (13/16ACT) ZP
36	P88404	BOLT-HEX: 3/4-10NC X 2-1/2 5ZP
37	P88110	NUT-HEX: 3/4-10NC 5ZP
38	PA66092	ASSY-TIE ROD (SEE PG. 54)
39	PA65438	BOLT-TIE ROD ZP
40	P88299	NUT-CASTLE: 1-14NF 2ZP



701457-A

ASSY-DRAWPOLE & STEERING LINKAGE

ITEM	PART NO.	DESCRIPTION
41	P88133	PIN-COTTER: 3/16 DIA X 2 ZP
42	P88550	FITTING-GREASE: 1/4-28 3038-B ZP
43	P89305	FITTING-GREASE: 1/4-28NF 90 DEG 3054-B ZP
44	PA67649	BUSHING-MACH. 1.765 X 2.00 X 3.500
45	PA35801	TOW RING 66000 LB (OPTIONAL)
46	P89389	BOLT-HEX: 3/4-10NC X 2-1/2 8YZP
47	P89509	WASHER-FLAT: 3/4 YZP
48	P88665	NUT-TOPLOCK: 3/4-10NC 5ZP
49	PA67679	WLDMT-DRAWPOLE CLEVIS
50	PA65829	JACK STAND 2000 LB(W/O MNT TUBE) (NOT SHOWN)



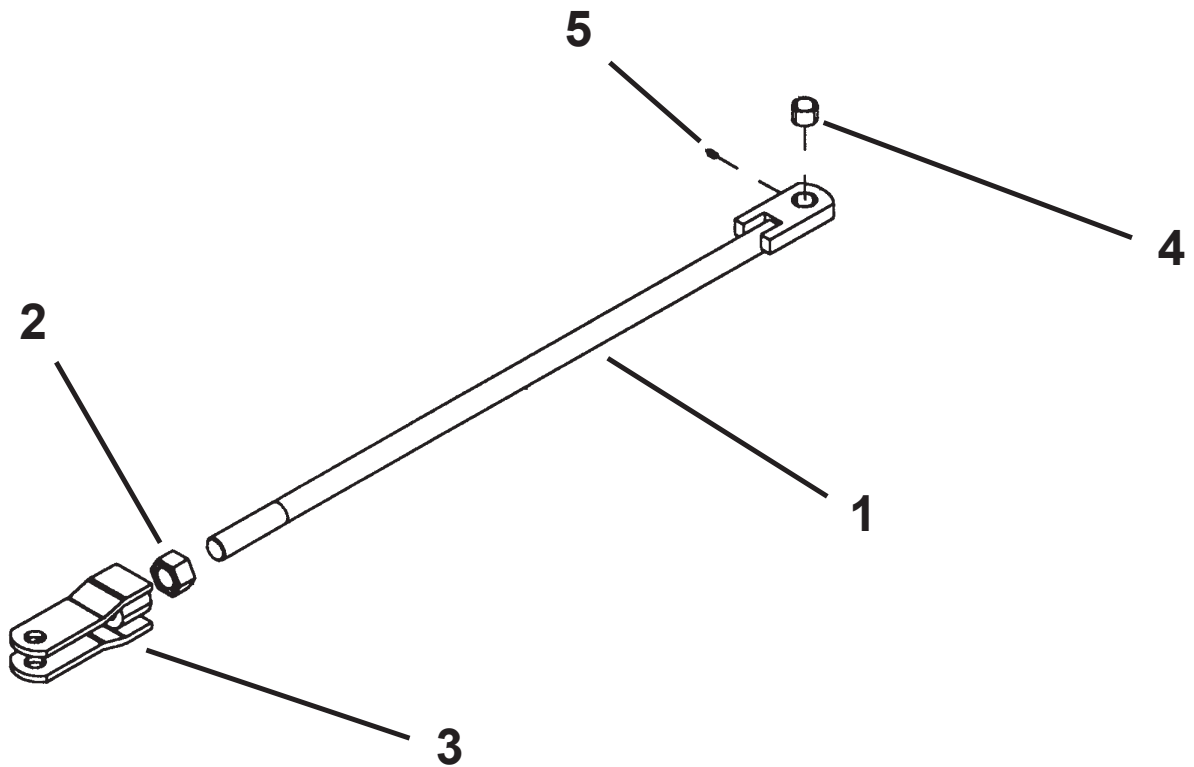
701458-A

ASSY-AXLES REAR 150"

ITEM	PART NO.	DESCRIPTION
1	P88111	BOLT-HEX: 3/4-10NC X 3-1/2 5ZP
2	P88611	NUT-NYLOCK: 3/4-10NC 2ZP
3	P320159	ASSY-HUB 8 BOLT W/BRAKE (BLACK) (SEE PG. 55)
4	P88262	WASHER-LOCK: 1/4ID (5/16ACT) ZP
5	P89028	BOLT-HEX: 1/4-20NC X 1-1/4 5ZP
6	PA65425	WLDMT-FLANGE & SPROCKET 21T
7	PA65436	WLDMT-SPINDLE RH
	PA65943	WLDMT-SPINDLE RH 120
8	PA65437	WLDMT-SPINDLE LH
	PA65177	SPINDLE WELDMENT
9	PA65683	ROD-TRUSS ZP
10	P88196	WASHER-FLAT: 1 (1-1/16 X 2-1/2ACT) 2ZP
11	P88125	NUT-HEX: 1-8NC 5ZP
12	P88617	WASHER-HELICAL: 1ID ZP

ASSY-TIE ROD

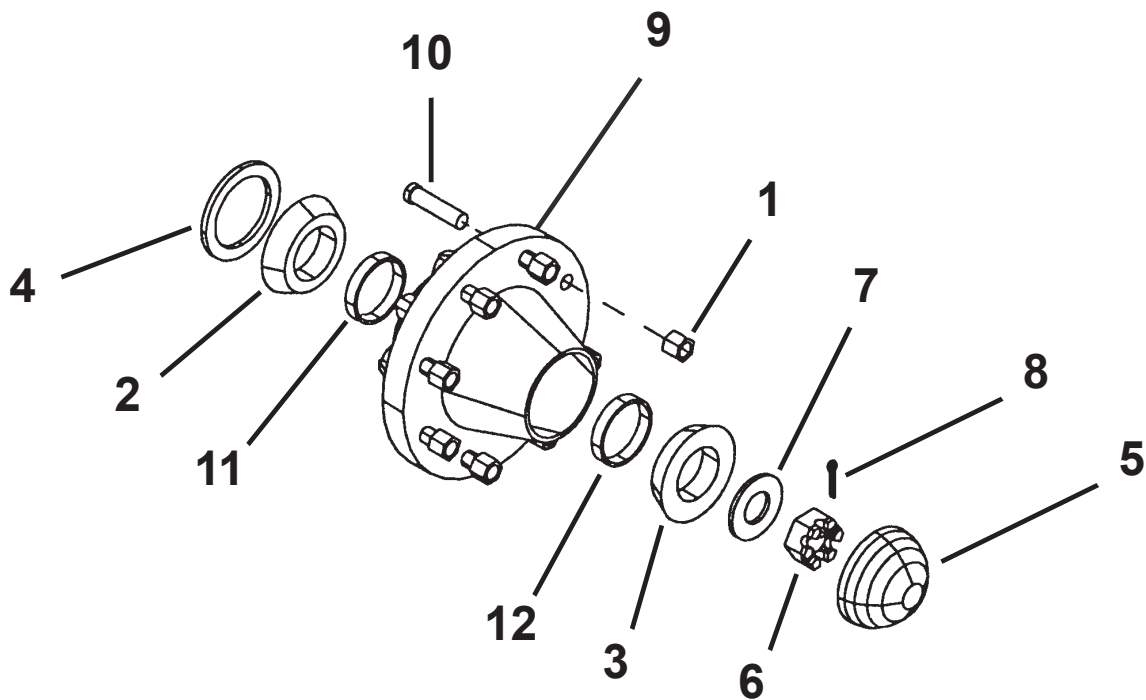
ITEM	PART NO.	DESCRIPTION
1	PA65536	TIE ROD - W/BUSHING
2	P89425	NUT JAM 1-1/4-12NF 5Z
3	PA65270	TIE ROD CLEVIS-ZP
4	PA65878	BUSHING-MACH: 1.131 X 1.25 X .875
5	P88574	BOLT-HEX: 1/2-13NC X 5-1/2 5ZP



701459-A

ASSY-HUB

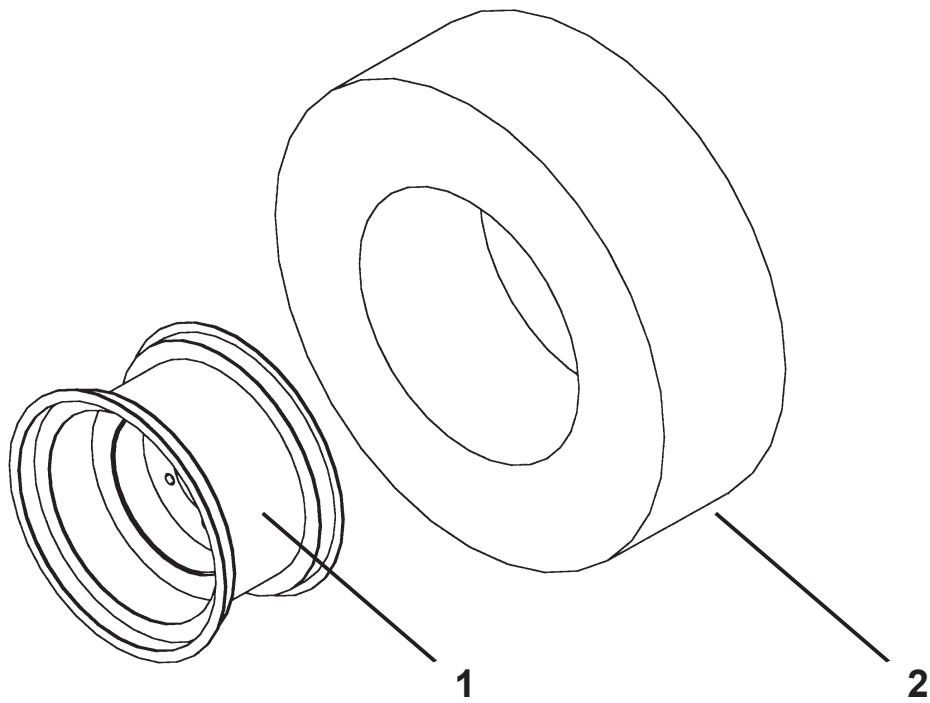
ITEM	PART NO.	DESCRIPTION
	P320159	ASSY-HUB 8 BOLT W/BRAKE (BLACK)
1	P240716	NUT-BEVELED WB46
2	P240717	INNER BEARING 387AS
3	P14248	1.625BORE BRG CONE(LM501349)
4	P1017764	SEAL: (HUB CTD# HA 817)
5	P320152	CAP-HUB 8 BOLT
6	P1030726	NUT-SPINDLE: 1 NF 2NP
7	P88738	WASHER-FLAT: 1SAE(1-1/16 X 2ACT) 2ZP
8	P89528	PIN-COTTER: 3/16DIA X 1-3/4 NP
9	P320160	HUB-8 BOLT W/CUPS W/BRAKE (BLACK)
10	P240715	STUD-LUG BOLT 5/8-18 X2-1/2 WB46
11	P240720	INNER CUP 382A
12	P14249	CUP,BEARING (LM501310)



701460-A

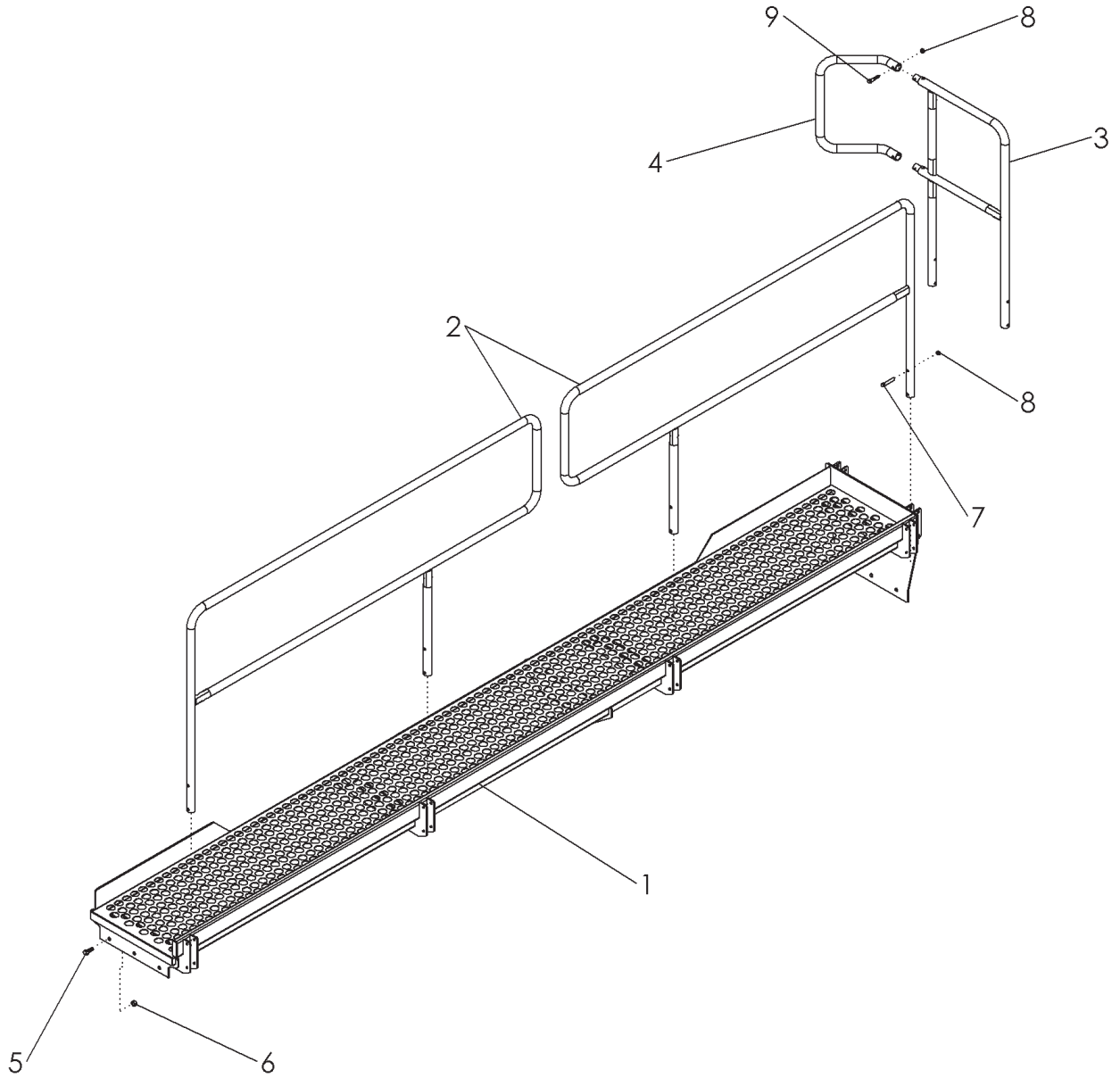
WHEEL ASSEMBLY

ITEM	PART NO.	DESCRIPTION
	PA65685	TIRE-MNTD: 18.4X26R1 10 PLY RH (SILVER)
	PA66217	TIRE-MNTD: 18.4X26R1 10 PLY LH (SILVER)
1	NS	TIRE 18.4-26 10PLY R1
2	PA1020719	WHEEL 16 X 26 8 BOLT (SILVER)
	PA65687	TIRE-MNTD: 23.1X26 R1 10PLY RH (SILVER)
	PA66215	TIRE-MNTD: 23.1X26 R1 10PLY LH (SILVER)
1	NS	TIRE 23.1-26 10PLY R1
2	PA1021068	WHEEL 20 X 26 8 BOLT SILVER



701462-A

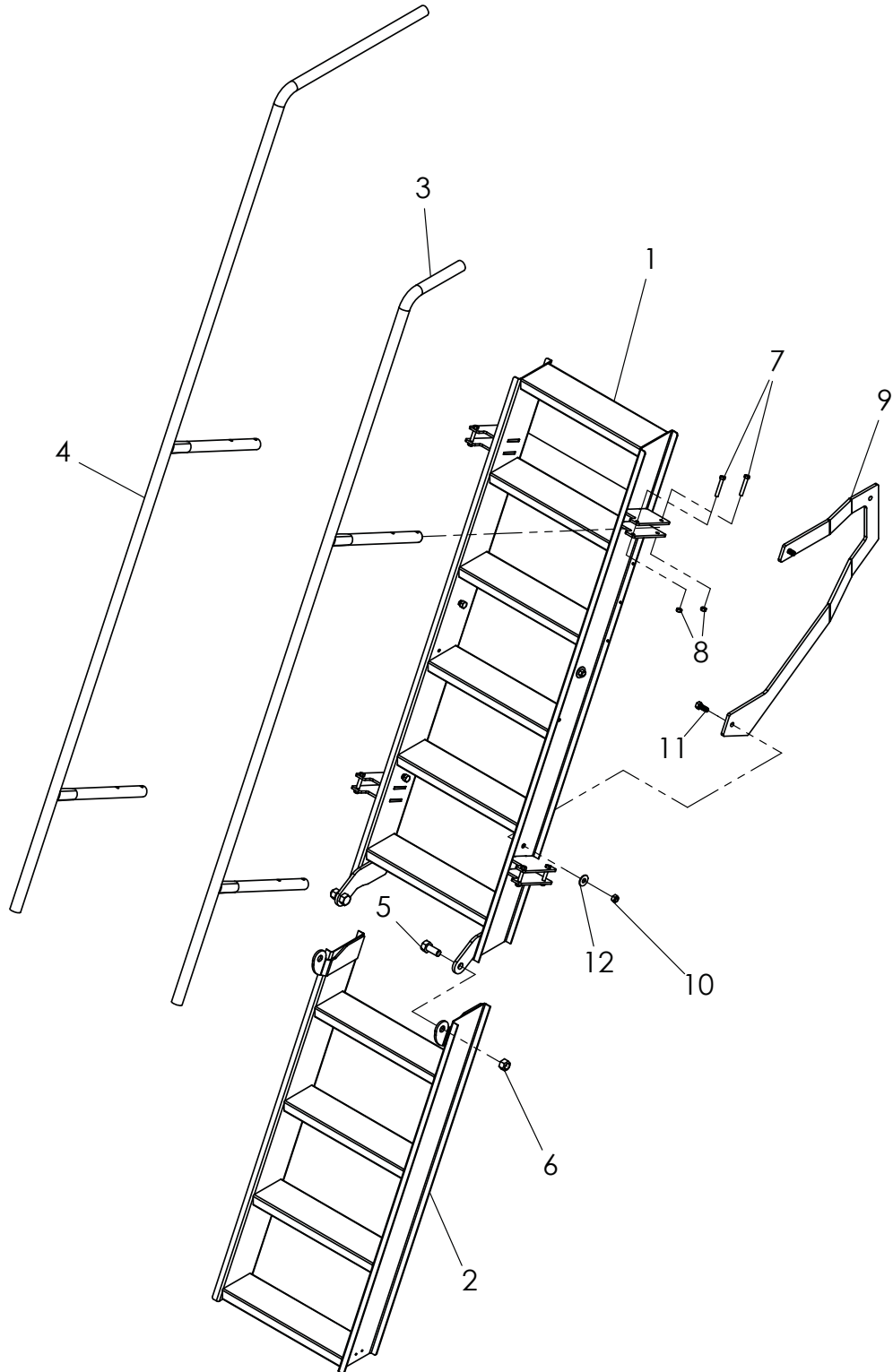
This Page Intentionally Left Blank



701469-A

ASSY-CATWALK & HANDRAILS

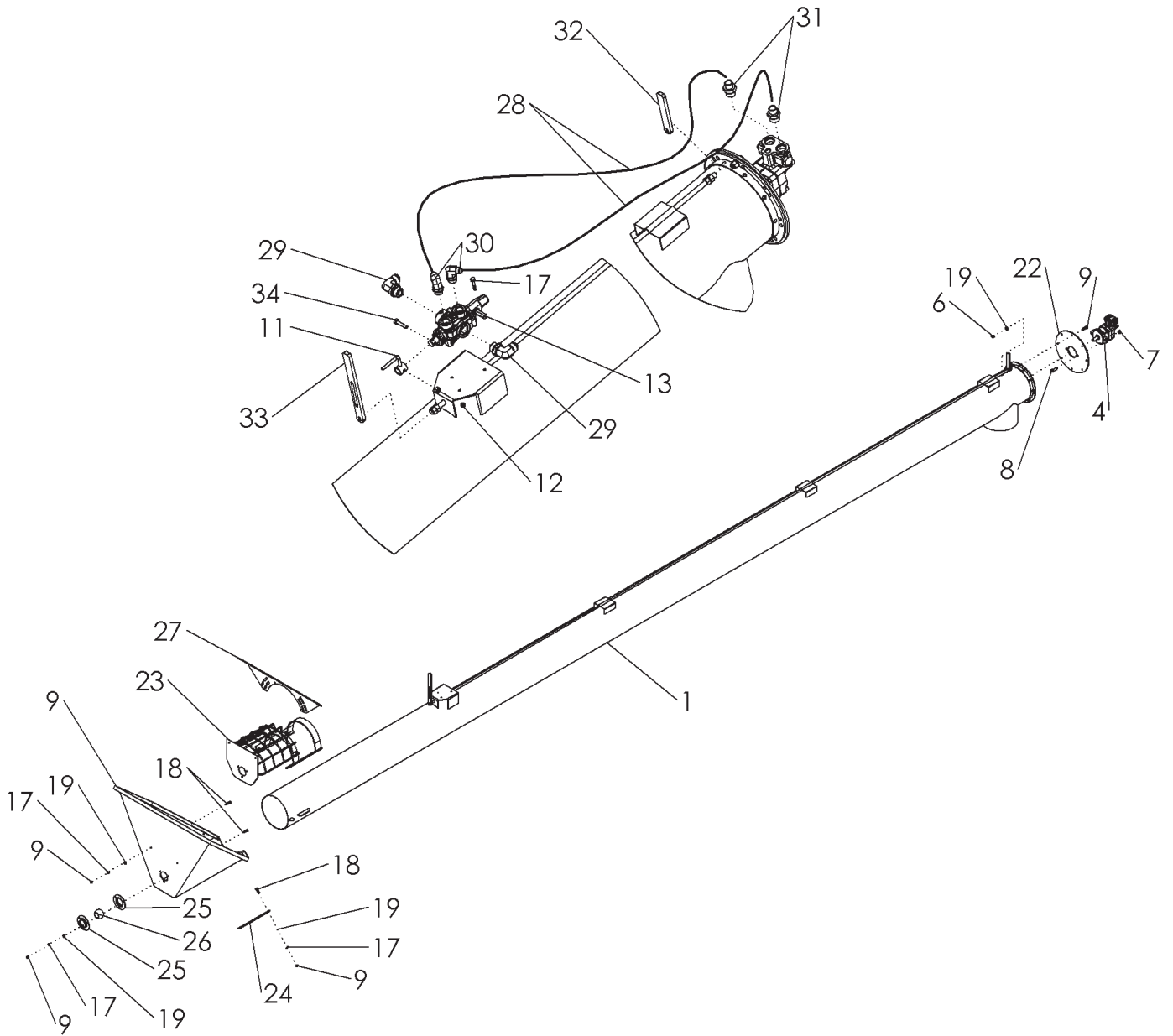
ITEM	PART NO.	DESCRIPTION
1	PA65589	WLDMT-CATWALK
2	PA65598	WLDMT-SIDE RAIL
3	PA65601	WLDMT-FRONT HAND RAIL PC
4	PA65606	WLDMT-LOWER LADDER
5	P88554	BOLT-HEX: 1/2-13NC X 1-1/4 5ZP
6	P88661	NUT-TOPLOCK: 1/2-13NC 5ZP
7	PA59390	BOLT-HEX: .38 X 2.25 NC GR5 ZP
8	P88659	NUT-TOPLOCK: 3/8-16NC 5ZP
9	P88567	BLT HEX 3/8-16NC X 1-3/4 5Z



701470-A

ASSY-LADDER AIR SYSTEM

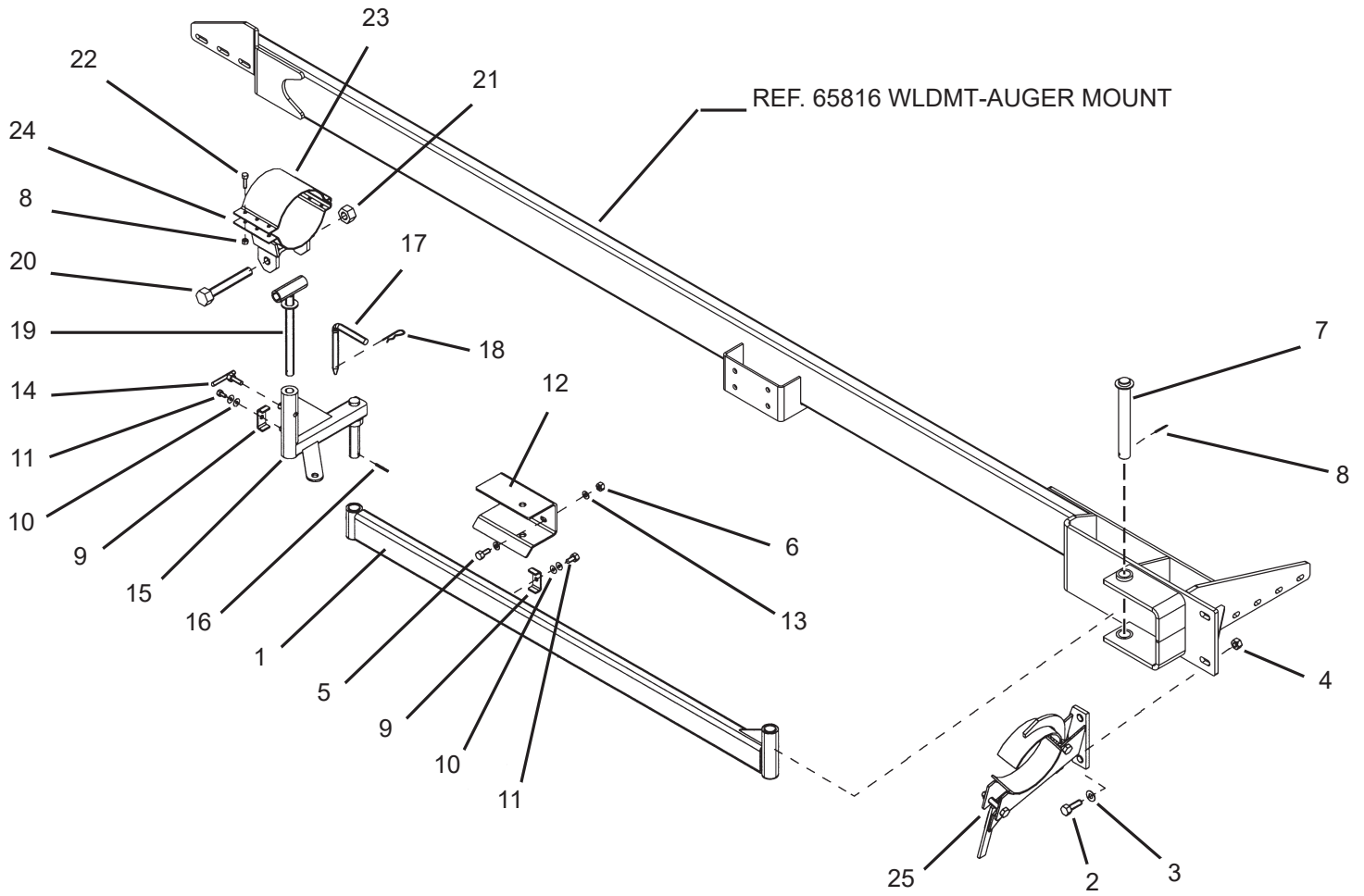
ITEM	PART NO.	DESCRIPTION
1	PA65607	WLDMT-UPPER LADDER
2	PA65617	WLDMT-LOWER LADDER
3	PA65623	WLDMT-LADDER RAIL
4	PA66377	WLDMT-LADDER RAIL LH
5	P88405	BOLT-HEX: 3/4-10NC X 1-3/4 5ZP
6	P88665	NUT-TOPLOCK: 3/4-10NC 5ZP
7	P88581	BLT HEX 3/8-16NC X 2-1/4 5Z
8	P88659	NUT-TOPLOCK: 3/8-16NC 5ZP
9	PA67100	MOUNT-LADDER BOLT-ON RH
10	PA67099	MOUNT-LADDER BOLT-ON LH
11	P88661	NUT-TOPLOCK: 1/2-13NC 5ZP
12	P88554	BOLT-HEX: 1/2-13NC X 1-1/4 5ZP



701471-A

ASSY-AUGER & HYDRAULICS

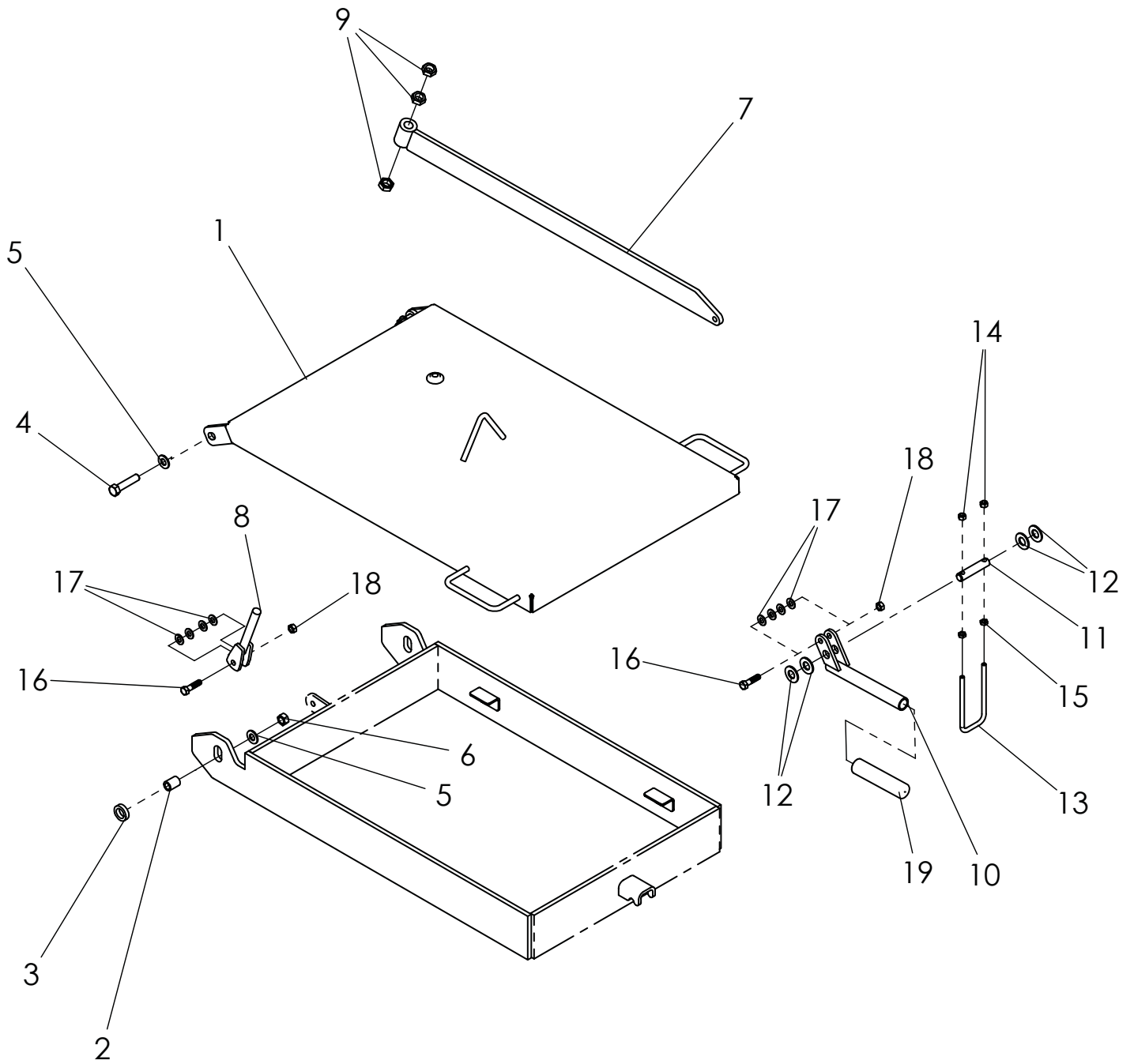
ITEM	PART NO.	DESCRIPTION
1	PA66101	ASSY-AUGER POLY 10 W/HOPPER
	PA66104	FLIGHTING-POLY 9 X 21
	PA66103	TUBE 10 X 21
	PA66260	FLIGHTING-9 DIA X 6 LONG (TOP & BOTTOM REPLACEMENT SECTION)
	PA33582	FLIGHTING-STEEL 9" X 21 FT
2	PA66102	HOSE-FLEX SPOUT 10 X 48 (NOT SHOWN)
3	PA66256	CLAMP-HOSE: #18 10" (NOT SHOWN)
4	PA1032092	MOTOR-HYDRAULIC PAINTED
	PA1023837	SEAL-KIT: CHARLYNN 61258
5	PA66079	BOLT-HEX: SS .38 X 2.75 NC
6	P1033268	NUT-NYLOCK: 3/8NC 18-8SS
7	PA65313	NUT-NYLOCK:.50
8	P88475	BOLT-HEX: 1/2-13NC X 1-1/2 5ZP
9	P89034	BOLT-HEX: 3/8-16NC X 1 5ZP
10	P88626	NUT NLK 3/8-16NC 5Z
11	PA66107	HANDLE-AUGER VALVE ZP
12	PA58747	BOLT-CRG: .50 X 9.00 NC GR2 ZP
13	PA65845	VALVE-CONTROL 4 WAY PAINTED
	PA65847	KT-SEAL KIT
14	P88504	BOLT-HEX: 1/4-20NC X 1-1/2 5ZP
15	P88262	WASHER-LOCK: 1/4ID (5/16ACT) ZP
16	P88172	NUT-HEX: 1/4-20NC 5ZP
17	P88362	WASHER-HELICAL: 3/8ID ZP
18	P88555	BLT HEX 3/8-16NC X 1-1/4 5Z
19	P88282	WASHER-FLAT: 3/8 (7/16 X 1ACT) 2ZP
20	PA65723	HOSE KIT: AIR SYSTEM
21	PA66277	HOPPER-POLY 10
22	PA66257	PLATE-MOTOR MOUNT 10
23	PA66258	MOUNT-HOPPER 10
24	PA65913	PLATE-BACKING HOPPER MOUNT
25	PA65914	BEARING-FLANGE
26	PA33650	BEARING
27	PA66337	MESH-HOPPER 10
28	PA65896	HOSE: .50 X 156 8FJX-8FJX-90
29	PA64060	FTG-ELBOW: 12MB-12MJ-90 (244989)
30	PA65901	FTG-ELBOW: 10MB-8MJ-90 (354405)
31	P240367	ADP 8MJ X 10MORB
32	PA66443	TOP HANDLE
33	P88479	BOLT-HEX: 5/16-18NC X 1-1/2 5ZP
34	PA1014124	BOLT-HEX: .31 X 1.50 NC GR5 ZP (88479)



701472-A

ASSY-AUGER MOUNTING COMPONENTS (10")

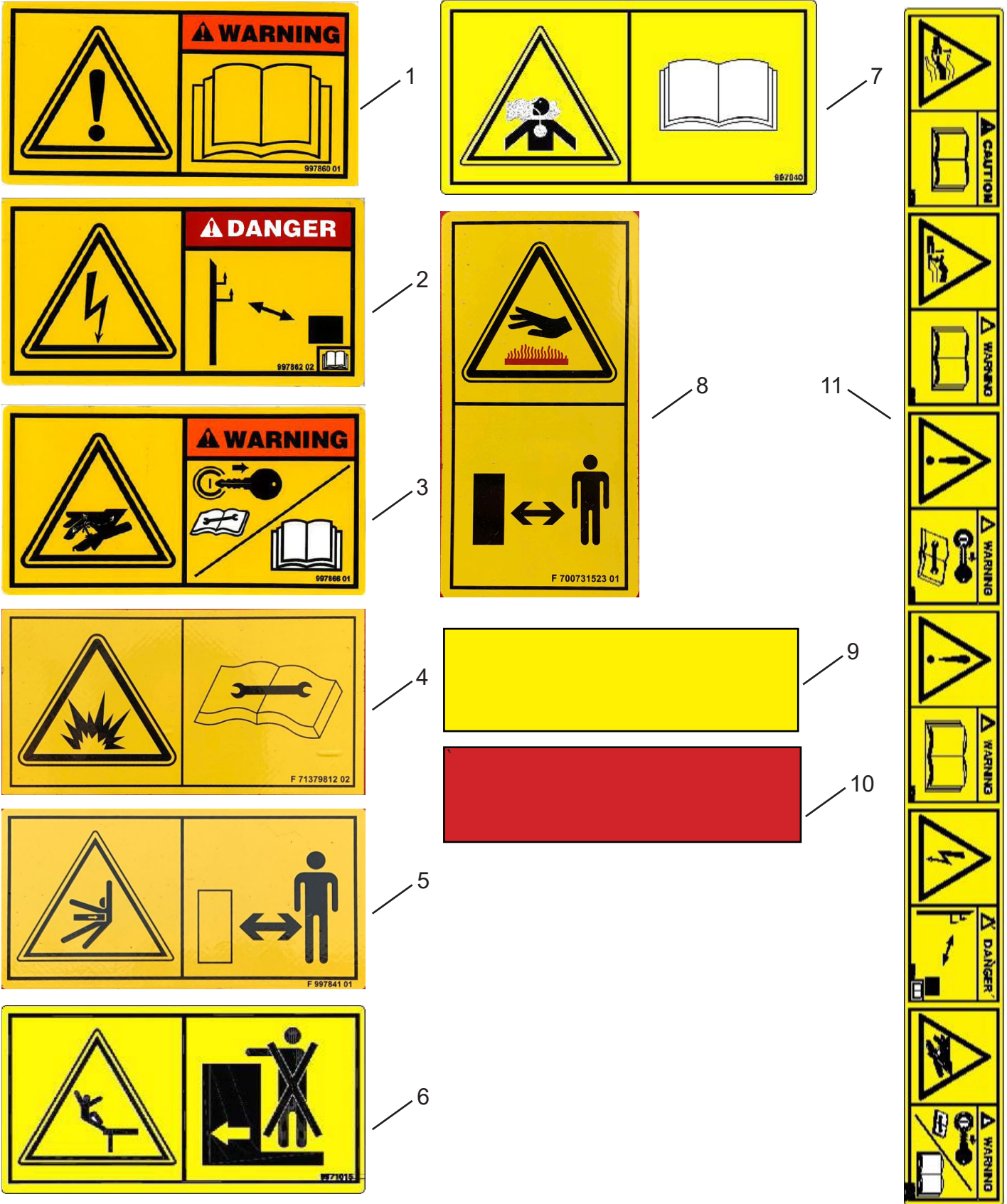
ITEM	PART NO.	DESCRIPTION
1	P65462	WLDMT-LONG AUGER MOUNT PAINTED
2	P88294	BOLT-HEX: 5/8-11NC X 2 5ZP
3	P88277	WASHER-FLAT: 5/8 (11/19 X 1-3/4ACT) 2ZP
4	P88126	NUT-HEX: 5/8-11NC 5ZP
5	P88475	BOLT-HEX: 1/2-13NC X 1-1/2 5ZP
6	P88621	WASHER-FLAT: 1/4 (5/16X 3/4ACT) 2ZP
7	PA65479	WLDMT-PIN
8	P89075	NUT-NYLOCK: 1-8NC 2ZP
9	PA50714	CLAMP 1/2 ZP
10	P88362	WASHER-HELICAL: 3/8ID ZP
11	PA1011600	BOLT-HEX: 3/8-16NC X 1 5ZP
12	PA65486	WLDMT-AUGER BRACKET PAINTED
13	PA1014443	WASHER-FLAT: 1/2 (9/16 X 1-3/8ACT) 2ZP
14	PA65488	WLDMT-HANDLE ZP
15	PA65486	AUGER BRACKET-PAINTED
16	PA1011726	PIN-ROLL: .25 X 2.00 NP
17	PA65487	PIN-LOCK ZP
18	P89500	PIN-HAIR: 3/16 X 3-1/4 ZP
19	PA65475	WLDMT-PIVOT TUBE
	PA64505	GRIP-HANDLE RED 1 ID X 5.06 L
20	PA65721	BOLT-HEX: 1-8NC X 7 5ZP
21	PA65684	NUT-NYLOCK: 1.00 NC GR2 ZP
22	P88679	BLT HEX 1/2-13NC X 2 5Z
23	PA66253	BRACKET-CLAMP TOP 10
24	PA66254	CLAMP-BOTTOM BRACKET 10
25	PA66255	ASSY-CLAMP 10



701473-A

ASSY-DOORS

ITEM	PART NO.	DESCRIPTION
1	PA65558	WLDMT-TOP DOOR
2	PA65555	TUBE-SPACER
3	PA65554	TUBE-SPACER 1.25 X .75 X .313L ZP
4	P88825	BOLT-HEX: 1/2-13NC X 2-1/4 5ZP
5	P89054	WASHER-FLAT: 1/2SAE ZP
6	P88661	NUT-TOPLOCK: 1/2-13NC 5ZP
7	PA65559	WLDMT-CLAMP BAR LEVER ZP
8	PA65556	ROD-ADJUSTMENT
9	P88774	NUT-JAM: 5/8-11NC 5ZP
10	PA65557	WLDMT-CLAMP LEVER
11	PA65560	PIN-CLAMP LEVER
12	P88630	WASHER-FLAT: 5/8SAE(21/32 X 1-5/16) 2ZP
13	PA65656	U-BOLT: .313 X 5 X 2 X 5
14	P88832	NUT-TOPLOCK: 5/16-18NC 5ZP
15	P89255	NUT-JAM: THIN 5/16 NC 5ZP
16	P88553	BOLT-HEX: 3/8-16NC X 1-1/2 5ZP
17	P88739	WASHER-FLAT: 3/8SAE(12/32 X 13/16) 2ZP
18	P88659	NUT-TOPLOCK: 3/8-16NC 5ZP
19	PA65902	GRIP-BLACK 1 ID X 5.06 L
20	P64504	SEALANT-PROGLAZE--SILICONE (NOT SHOWN)
21	P1026562	WLDMT-SCREEN BASKET PC (SILVER) (NOT SHOWN)



701477-A

SAFETY DECALS

ITEM	PART NO.	DESCRIPTION
1	P997860	DECAL READ MANUAL WARNING
2	P997862	DECAL HIGH VOLTAGE DANGER
3	P997866	DECAL FLUID UNDER PRESSURE WARNING
4	P700730807	DECAL EXPLODING PARTS (DANGER)
5	P9971008	DECAL CRUSHING HAZARD DANGER
6	P9971016	FALL OFF HAZARD WARNING
7	P9971010	DECAL CHEMICAL HAZARD WARNING
8	P700730805	DECAL SAFETY SIGN-WARNING HOT SURFACE HAND
9	P22372	AMBER REFLECTOR
10	P23371	RED REFLECTOR
11	P9971163	DECAL SAFETY SET
12	P9971239	DECAL FLYING OBJECT FACE WARNING (NOT SHOWN)
13	P9971012	DECAL MOVING PART HAZARD WARNING (NOT SHOWN)
14	P9971240	DECAL AUGER ENTANGLEMENT HAND DANGER (NOT SHOWN)
15	P9971022	DECAL ELECTROCUTION DANGER (NOT SHOWN)



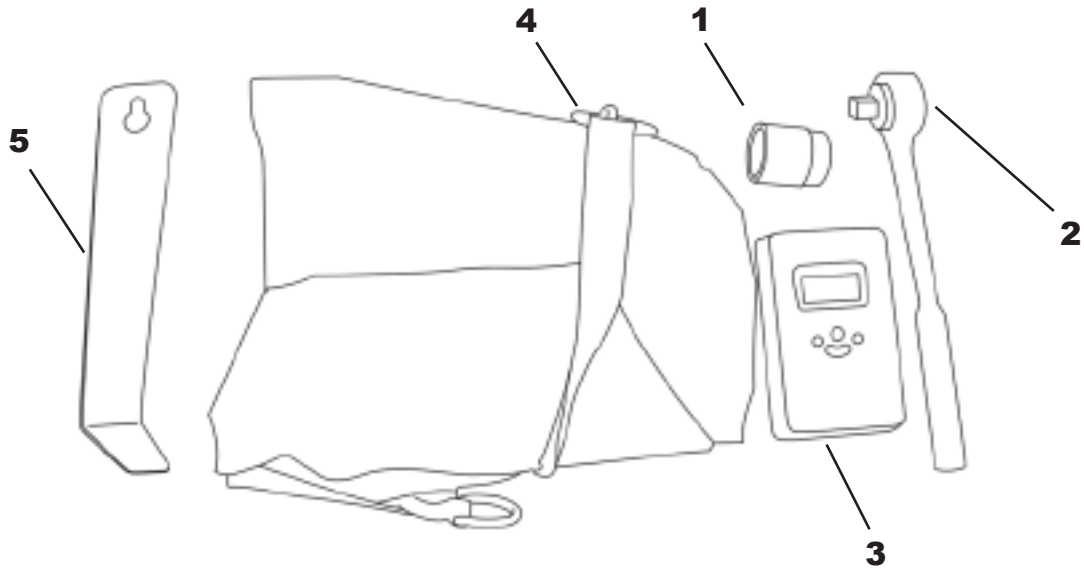
701478-A

BRANDING DECALS

ITEM	PART NO.	DESCRIPTION
1	P333088	DECAL-AS 3350/2800 F&R CONCORD
2	P333087	DECAL-AS 3350 LH CONCORD
3	P333086	DECAL-AS 3350 RH CONCORD
4	P333090	DECAL-AS 2800 LH CONCORD
5	P333089	DECAL-AS 2800 RH CONCORD

KIT-CALIBRATION COMPONENTS

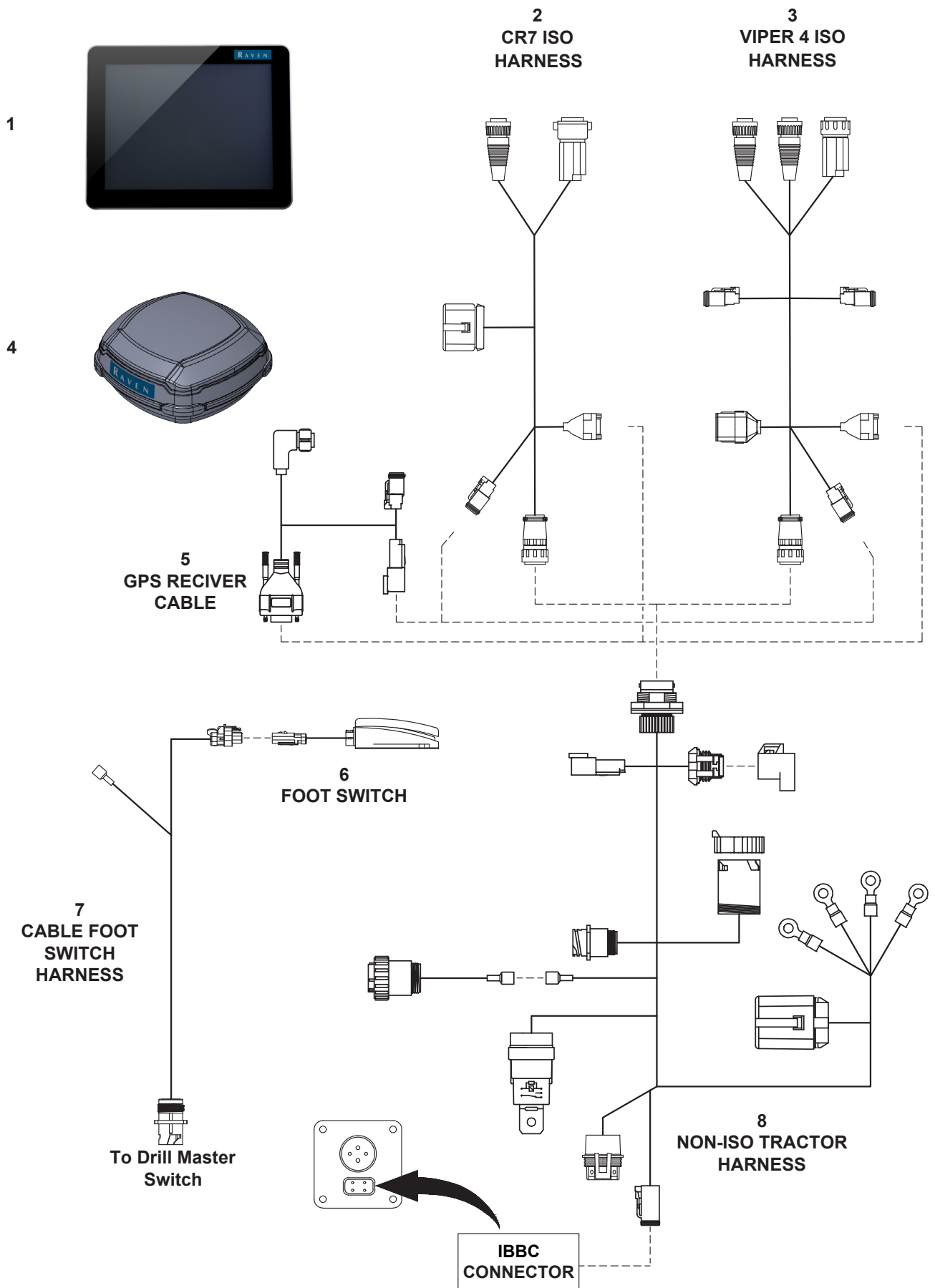
ITEM	PART NO.	DESCRIPTION
1	P240255	SOCKET 1/2DRV 1-1/8
2	PA65890	RATCHET-1/2 DRIVE
3	PA67641	SCALE-CALIBRATION DIGITAL 110 LB
4	P322326	CALIBRATION BAG
5	PA34569	PLATE-WRENCH SEED DEPTH



701479-A

CAMERA KIT (NOT SHOWN)

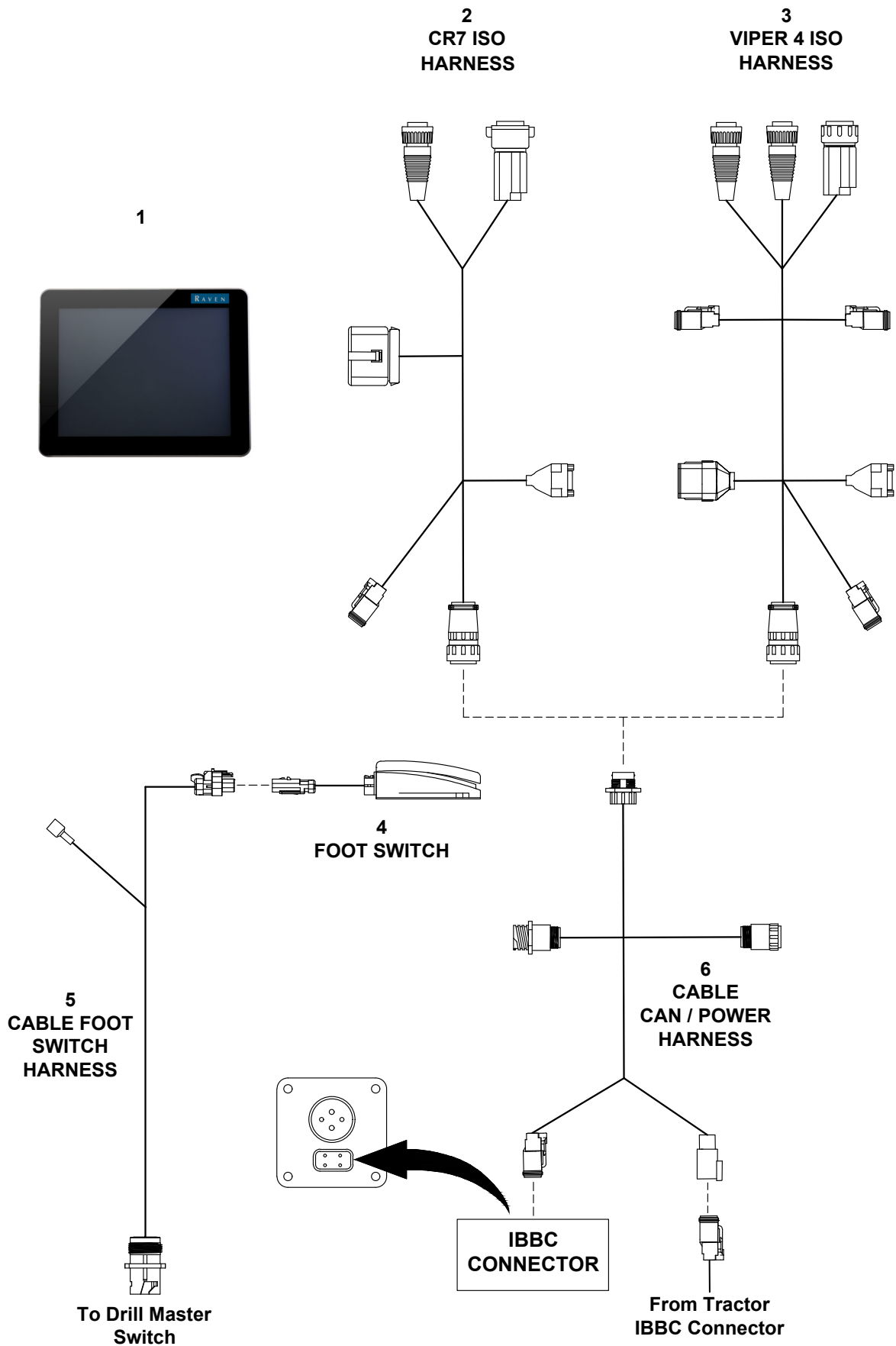
ITEM	PART NO.	DESCRIPTION
1	P537532D1	CAMERA-AGCAM (NOT SHOWN)
2	P539422D1	CABLE-VIDEO;10FT; AGCAM (NOT SHOWN)
3	P539423D1	CABLE-VIDEO; 6FT PASS THRU; AGCAM (NOT SHOWN)
4	P331763	CABLE-RVN CAMERA 4WAY (NOT SHOWN)
5	P331761	CABLE-RVN CAMERA 20FT (NOT SHOWN)
6	P331762	CABLE-RVN CAMERA 48FT (NOT SHOWN)



701451-A

NON-ISO TRACTOR RAVEN HARNESS (MY19 -)

ITEM	PART NO.	DESCRIPTION
1	P331742	FIELD COMPUTER - CR-7 UT/TC UNLOCK
	P331778	FIELD COMPUTER - VIPER 4+ ISO SC/MULTI
2	P331744	HARNESS-CR7 ISO VT
3	P331745	HARNESS-VIPER ISO VT
4	P331754	ANTENNA-GPS RVN 500S
	P331755	KT-MOUNTING 500S
5	P331753	CABLE-500S TO SERIAL PORT
4	P331768	SWITCH-MASTER FOOT
5	P331769	CABLE-MASTER FOOT 23FT
6	P331749	HARNESS-NON ISO TRACTOR
7	P331769	CABLE-MASTER FOOT 23FT
	P331859	HARNESS - EXT 48FT



701452-A

ISO CAB READY RAVEN HARNESS (MY19 -)

ITEM	PART NO.	DESCRIPTION
1	P331742	FIELD COMPUTER - CR-7 UT/TC UNLOCK
	P331778	FIELD COMPUTER - VIPER 4+ ISO SC/MULTI
2	P331744	HARNESS-CR7 ISO VT
3	P331745	HARNESS-VIPER ISO VT
4	P331768	SWITCH-MASTER FOOT
5	P331769	CABLE-MASTER FOOT 23FT
	P331859	HARNESS - EXT 48FT
6	P331746	HARNESS-RVN/ISO CAN/PWR

